

Datasheet for ABIN7189369
anti-CTAG1A antibody (Internal Region)[Go to Product page](#)

2 Images

Overview

Quantity:	100 µL
Target:	CTAG1A
Binding Specificity:	Internal Region
Reactivity:	Human
Host:	Rabbit
Clonality:	Polyclonal
Conjugate:	This CTAG1A antibody is un-conjugated
Application:	ELISA, Immunohistochemistry (IHC)

Product Details

Immunogen:	Synthetic peptide corresponding to a region derived from internal residues of Human Cancer/testis antigen 1
Isotype:	IgG
Cross-Reactivity:	Human, Mouse, Rat
Purification:	Antigen Affinity Purified

Target Details

Target:	CTAG1A
Alternative Name:	CTAG1A (CTAG1A Products)
Background:	Background: The protein encoded by this gene is an antigen that is overexpressed in many

Target Details

cancers but that is also expressed in normal testis. This gene is found in a duplicated region of the X-chromosome and therefore has a neighboring gene of identical sequence. Expressed in testis and ovary and in a wide variety of cancers. Detected in uterine myometrium. Expressed from 18 weeks until birth in human fetal testis. In the adult testis, is strongly expressed in spermatogonia and in primary spermatocytes, but not in post-meiotic cells or in testicular somatic cells (at protein level).

Aliases: CTAG1A antibody, CTAG1B antibody, Autoimmunogenic cancer/testis antigen NY ESO 1 antibody, Autoimmunogenic cancer/testis antigen NY-ESO-1 antibody, Cancer antigen 3 antibody, Cancer/testis antigen 1 antibody, Cancer/testis antigen 1B antibody, Cancer/testis antigen 6.1 antibody, CT6.1 antibody, CTAG 1 antibody, CTAG 1B antibody, CTAG antibody, CTAG1 antibody, CTAG1B antibody, CTG1B_HUMAN antibody, ESO 1 antibody, ESO1 antibody, L antigen family member 2 antibody, LAGE 2 antibody, LAGE 2 protein antibody, LAGE 2B antibody, LAGE-2 antibody, LAGE2 antibody, LAGE2 protein antibody, LAGE2A antibody, LAGE2B antibody, New York esophageal squamous cell carcinoma 1 antibody, NY ESO 1 antibody, NYESO 1 antibody, NYESO1 antibody

UniProt: [P78358](#)

Application Details

Application Notes: IHC:1:50-1:100,

Restrictions: For Research Use only

Handling

Format: Liquid

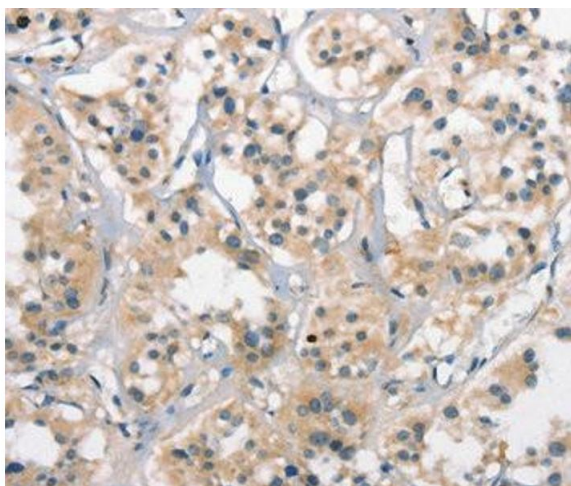
Buffer: Rabbit IgG in pH 7.3 PBS, 0.05 % Sodium azide, 50 % Glycerol.

Preservative: Sodium azide

Precaution of Use: This product contains Sodium azide: a POISONOUS AND HAZARDOUS SUBSTANCE which should be handled by trained staff only.

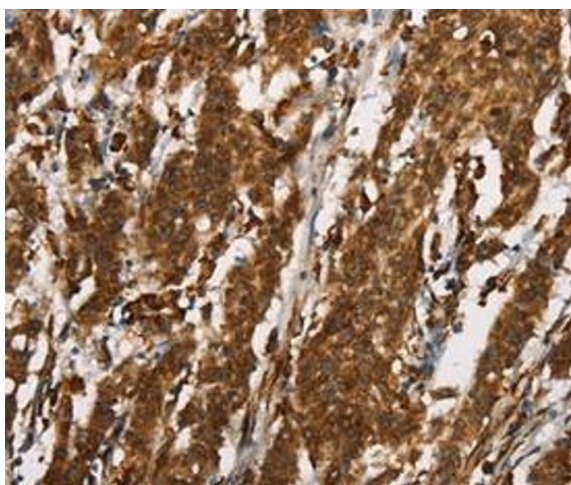
Storage: -20 °C,-80 °C

Storage Comment: Upon receipt, store at -20°C or -80°C. Avoid repeated freeze.



Immunohistochemistry

Image 1. Immunohistochemical analysis of paraffin-embedded Human thyroid cancer tissue using at dilution 1/25.



Immunohistochemistry

Image 2. Immunohistochemical analysis of paraffin-embedded Human gastric cancer tissue using at dilution 1/25.