

Datasheet for ABIN7189371

**anti-Keratin 6B antibody (Internal Region)**[Go to Product page](#)**2** Images

## Overview

Quantity:	100 µL
Target:	Keratin 6B (KRT6B)
Binding Specificity:	Internal Region
Reactivity:	Human
Host:	Rabbit
Clonality:	Polyclonal
Conjugate:	This Keratin 6B antibody is un-conjugated
Application:	ELISA, Immunohistochemistry (IHC)

## Product Details

Immunogen:	Synthetic peptide corresponding to a region derived from internal residues of Human keratin 6B
Isotype:	IgG
Cross-Reactivity:	Human, Mouse, Rat
Purification:	Antigen Affinity Purified

## Target Details

Target:	Keratin 6B (KRT6B)
Alternative Name:	KRT6B ( <a href="#">KRT6B Products</a> )
Background:	Background: The protein encoded by this gene is a member of the keratin gene family. The type II cytokeratins consist of basic or neutral proteins which are arranged in pairs of heterotypic

## Target Details

keratin chains coexpressed during differentiation of simple and stratified epithelial tissues. As many as six of this type II cytokeratin (KRT6) have been identified, the multiplicity of the genes is attributed to successive gene duplication events. The genes are expressed with family members KRT16 and/or KRT17 in the filiform papillae of the tongue, the stratified epithelial lining of oral mucosa and esophagus, the outer root sheath of hair follicles, and the glandular epithelia. Mutations in these genes have been associated with pachyonychia congenita. The type II cytokeratins are clustered in a region of chromosome 12q12-q13.

Aliases: CK-6B antibody, CK6B antibody, Cytokeratin-6B antibody, K2C6B\_HUMAN antibody, K6b antibody, Keratin antibody, Keratin epidermal type II K6B antibody, Keratin like 1 (a type II keratin sequence) antibody, Keratin type II cytoskeletal 6B antibody, Keratin-6B antibody, KRT6B antibody, KRTL1 antibody, PC2 antibody, PC4 antibody, type II cytoskeletal 6B antibody, Type-II keratin Kb10 antibody

UniProt: [P04259](#)

## Application Details

Application Notes: IHC:1:50-1:100,

Restrictions: For Research Use only

## Handling

Format: Liquid

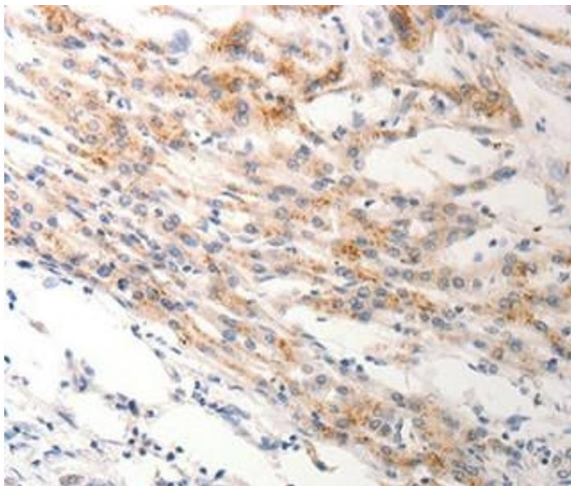
Buffer: Rabbit IgG in pH 7.3 PBS, 0.05 % Sodium azide, 50 % Glycerol.

Preservative: Sodium azide

Precaution of Use: This product contains Sodium azide: a POISONOUS AND HAZARDOUS SUBSTANCE which should be handled by trained staff only.

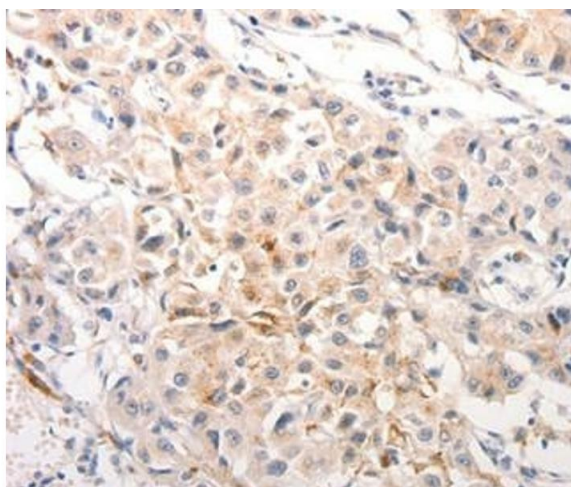
Storage: -20 °C,-80 °C

Storage Comment: Upon receipt, store at -20°C or -80°C. Avoid repeated freeze.



#### Immunohistochemistry

**Image 1.** Immunohistochemical analysis of paraffin-embedded Human lung cancer tissue using at dilution 1/0.



#### Immunohistochemistry

**Image 2.** Immunohistochemical analysis of paraffin-embedded Human breast cancer tissue using.