



[Go to Product page](#)

Datasheet for ABIN7189372

anti-Keratin 6C antibody (Internal Region)

2 Images

Overview

Quantity:	100 µL
Target:	Keratin 6C (KRT6C)
Binding Specificity:	Internal Region
Reactivity:	Human
Host:	Rabbit
Clonality:	Polyclonal
Conjugate:	This Keratin 6C antibody is un-conjugated
Application:	Immunohistochemistry (IHC), ELISA

Product Details

Immunogen:	Synthetic peptide corresponding to a region derived from internal residues of Human keratin 6C
Isotype:	IgG
Cross-Reactivity:	Human, Mouse, Rat
Purification:	Antigen Affinity Purified

Target Details

Target:	Keratin 6C (KRT6C)
Alternative Name:	KRT6C (KRT6C Products)
Background:	Background: Keratins are intermediate filament proteins responsible for the structural integrity of epithelial cells and are subdivided into epithelial keratins and hair keratins. The type II

Target Details

keratins are clustered in a region of chromosome 12q13.

Aliases: CK 6A antibody, CK 6B antibody, CK 6C antibody, CK 6D antibody, CK 6E antibody, CK-6B antibody, CK-6C antibody, CK-6E antibody, Cytokeratin 6a antibody, Cytokeratin 6B antibody, Cytokeratin 6C antibody, Cytokeratin 6D antibody, Cytokeratin 6E antibody, Cytokeratin-6B antibody, Cytokeratin-6C antibody, Cytokeratin-6E antibody, K2C6C_HUMAN antibody, K6a keratin antibody, K6b keratin antibody, K6C antibody, K6c keratin antibody, K6d keratin antibody, K6e keratin antibody, Keratin antibody, Keratin K6h antibody, Keratin type II cytoskeletal 6A antibody, Keratin type II cytoskeletal 6B antibody, Keratin type II cytoskeletal 6C antibody, Keratin type II cytoskeletal 6D antibody, Keratin type II cytoskeletal 6E antibody, Keratin-6C antibody, KRT6A antibody, KRT6B antibody, KRT6C antibody, KRT6D antibody, KRT6E antibody, type II cytoskeletal 6C antibody, Type-II keratin Kb12 antibody

UniProt: [P48668](#)

Application Details

Application Notes: IHC:1:50-1:100,

Restrictions: For Research Use only

Handling

Format: Liquid

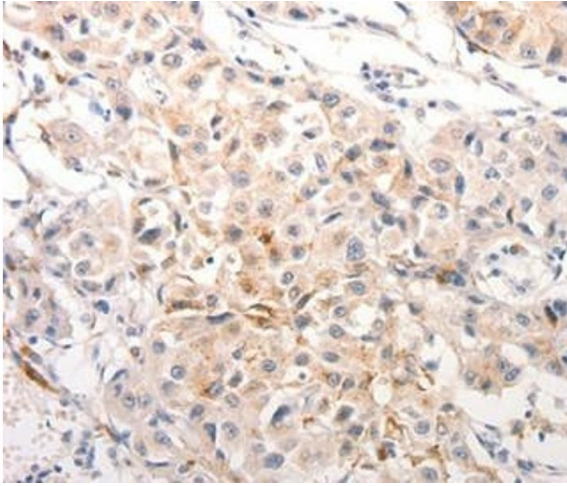
Buffer: Rabbit IgG in pH 7.3 PBS, 0.05 % Sodium azide, 50 % Glycerol.

Preservative: Sodium azide

Precaution of Use: This product contains Sodium azide: a POISONOUS AND HAZARDOUS SUBSTANCE which should be handled by trained staff only.

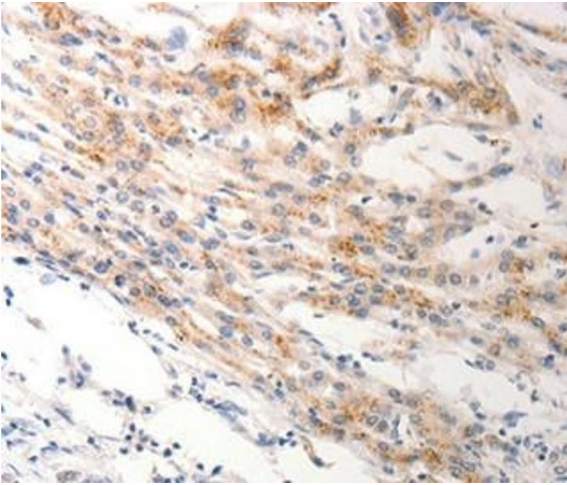
Storage: -20 °C,-80 °C

Storage Comment: Upon receipt, store at -20°C or -80°C. Avoid repeated freeze.



Immunohistochemistry

Image 1. Immunohistochemical analysis of paraffin-embedded Human breast cancer tissue using.



Immunohistochemistry

Image 2. Immunohistochemical analysis of paraffin-embedded Human lung cancer tissue using.