

Datasheet for ABIN7189386

anti-Lysine (K)-Specific Methyltransferase 2B (KMT2B) (N-Term) antibody[Go to Product page](#)**1** Image

Overview

Quantity:	100 µL
Target:	Lysine (K)-Specific Methyltransferase 2B (KMT2B)
Binding Specificity:	N-Term
Reactivity:	Human
Host:	Rabbit
Clonality:	Polyclonal
Application:	ELISA, Immunohistochemistry (IHC)

Product Details

Immunogen:	Synthetic peptide corresponding to residues near the N terminal of Human lysine (K)-specific methyltransferase 2D
Isotype:	IgG
Cross-Reactivity:	Human, Mouse, Rat
Purification:	Antigen Affinity Purified

Target Details

Target:	Lysine (K)-Specific Methyltransferase 2B (KMT2B)
Alternative Name:	KMT2B (KMT2B Products)
Background:	Background: The protein encoded by this gene is a histone methyltransferase that methylates the Lys-4 position of histone H3. The encoded protein is part of a large protein complex called ASCOM, which has been shown to be a transcriptional regulator of the beta-globin and estrogen

Target Details

receptor genes. Mutations in this gene have been shown to be a cause of Kabuki syndrome.

Aliases: Histone-lysine N-methyltransferase 2B antibody, HRX2 antibody, KIAA0304 gene product antibody, KMT2B antibody, KMT2B_HUMAN antibody, Likely ortholog of mouse WW domain binding protein 7 antibody, Lysine N-methyltransferase 2B antibody, mixed lineage leukemia 4 antibody, Mixed lineage leukemia gene homolog 2 protein antibody, MLL2 antibody, myeloid lymphoid leukemia 4 antibody, Myeloid lymphoid or mixed lineage leukemia protein 4 antibody, Myeloid/lymphoid or mixed-lineage leukemia protein 4 antibody, Trithorax homolog 2 antibody, trithorax homologue 2 antibody, TRX2 antibody, WBP-7 antibody, WBP7 antibody, WW domain-binding protein 7 antibody

UniProt: [Q9UMN6](#)

Pathways: [Warburg Effect](#)

Application Details

Application Notes: IHC:1:50-1:100,

Restrictions: For Research Use only

Handling

Format: Liquid

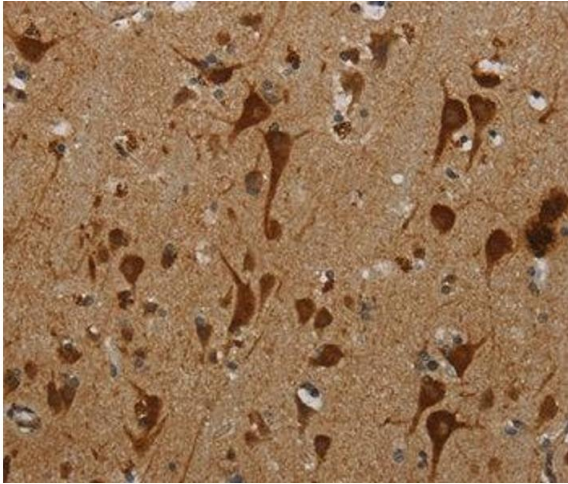
Buffer: Rabbit IgG in pH 7.3 PBS, 0.05 % Sodium azide, 50 % Glycerol.

Preservative: Sodium azide

Precaution of Use: This product contains Sodium azide: a POISONOUS AND HAZARDOUS SUBSTANCE which should be handled by trained staff only.

Storage: -20 °C, -80 °C

Storage Comment: Upon receipt, store at -20°C or -80°C. Avoid repeated freeze.



Immunohistochemistry

Image 1. Immunohistochemical analysis of paraffin-embedded Human brain tissue using at dilution 1/40.