

Datasheet for ABIN7189387
anti-MC3R antibody (N-Term)[Go to Product page](#)

1 Image

Overview

Quantity:	100 µL
Target:	MC3R
Binding Specificity:	N-Term
Reactivity:	Human
Host:	Rabbit
Clonality:	Polyclonal
Conjugate:	This MC3R antibody is un-conjugated
Application:	Western Blotting (WB), ELISA

Product Details

Immunogen:	Synthetic peptide corresponding to residues near the N terminal of Human melanocortin 3 receptor
Isotype:	IgG
Cross-Reactivity:	Human, Mouse, Rat
Purification:	Antigen Affinity Purified

Target Details

Target:	MC3R
Alternative Name:	MC3R (MC3R Products)
Background:	Background: This gene encodes a G-protein-coupled receptor for melanocyte-stimulating

Target Details

hormone and adrenocorticotrophic hormone that is expressed in tissues other than the adrenal cortex and melanocytes. This gene maps to the same region as the locus for benign neonatal epilepsy. Mice deficient for this gene have increased fat mass despite decreased food intake, suggesting a role for this gene product in the regulation of energy homeostasis. Mutations in this gene are associated with a susceptibility to obesity in humans.

Aliases: BMIQ9 antibody, MC3 antibody, MC3 R antibody, MC3 Receptor antibody, MC3-R antibody, Mc3r antibody, MC3R_HUMAN antibody, Melanocortin 3 receptor antibody, Melanocortin receptor 3 antibody, OB20 antibody, Obesity quantitative trait locus antibody, OQTL antibody

UniProt: [P41968](#)

Pathways: [cAMP Metabolic Process](#)

Application Details

Application Notes: WB:1:500-1:3000,

Restrictions: For Research Use only

Handling

Format: Liquid

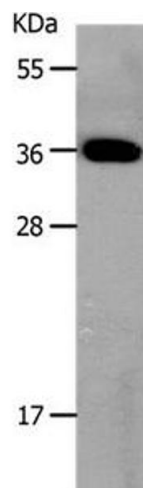
Buffer: Rabbit IgG in pH 7.3 PBS, 0.05 % Sodium azide, 50 % Glycerol.

Preservative: Sodium azide

Precaution of Use: This product contains Sodium azide: a POISONOUS AND HAZARDOUS SUBSTANCE which should be handled by trained staff only.

Storage: -20 °C, -80 °C

Storage Comment: Upon receipt, store at -20°C or -80°C. Avoid repeated freeze.



Western Blotting

Image 1. Gel: 10 % SDS-PAGE Lysates (from left to right):
Mouse large intestine tissue Amount of lysate: 30 µg per
lane Primary antibody: 1/800 dilution Secondary antibody
dilution: 1/8000 Exposure time: 20 seconds