



[Go to Product page](#)

Datasheet for ABIN7189407  
**anti-VHL antibody (AA 1-50)**

2 Images

Overview

Quantity:	100 µg
Target:	VHL
Binding Specificity:	AA 1-50
Reactivity:	Human
Host:	Rabbit
Clonality:	Polyclonal
Conjugate:	This VHL antibody is un-conjugated
Application:	Immunohistochemistry (IHC), ELISA

Product Details

Immunogen:	Synthetic peptide from Human protein at AA range: 1-50
Isotype:	IgG
Cross-Reactivity:	Human
Purification:	The antibody was affinity-purified from rabbit serum by affinity-chromatography using specific immunogen.

Target Details

Target:	VHL
Alternative Name:	VHL ( <a href="#">VHL Products</a> )
Background:	Elongin binding protein antibody, G7 protein antibody, HRCA 1 antibody, HRCA1 antibody,

## Target Details

---

Protein G7 antibody, pVHL antibody, RCA 1 antibody, RCA1 antibody, VHL 1 antibody, VHL antibody, VHL\_HUMAN antibody, VHL1 antibody, VHLH antibody, Von Hippel Lindau antibody, Von Hippel Lindau disease tumor suppressor antibody, von Hippel Lindau syndrome antibody, von Hippel Lindau tumor suppressor antibody, Von Hippel Lindau tumor suppressor, E3 ubiquitin protein ligase antibody, Von Hippel-Lindau disease tumor suppressor antibody

UniProt: [P40337](#)

Pathways: [Tube Formation, Signaling Events mediated by VEGFR1 and VEGFR2, Ubiquitin Proteasome Pathway](#)

## Application Details

---

Application Notes: IHC:1:50-300, ELISA:1:10000-20000,

Restrictions: For Research Use only

## Handling

---

Format: Liquid

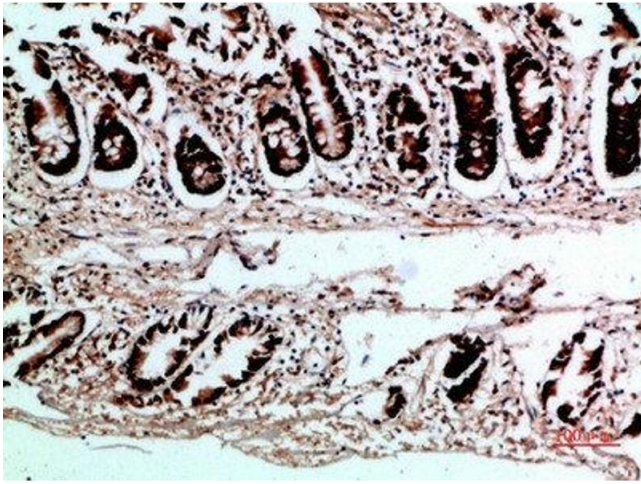
Buffer: PBS, pH 7.4, containing 0.02 % sodium azide as Preservative and 50 % Glycerol.

Preservative: Sodium azide

Precaution of Use: This product contains Sodium azide: a POISONOUS AND HAZARDOUS SUBSTANCE which should be handled by trained staff only.

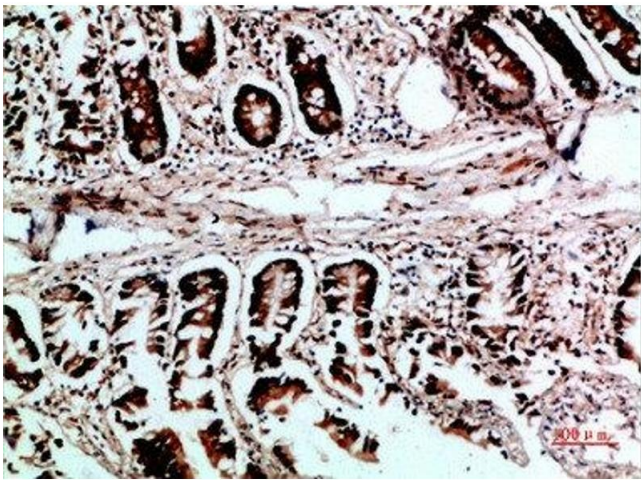
Storage: -20 °C,-80 °C

Storage Comment: Upon receipt, store at -20°C or -80°C. Avoid repeated freeze.



#### Immunohistochemistry

**Image 1.** Immunohistochemical analysis of paraffin-embedded human-colon, antibody was diluted at 1:200



#### Immunohistochemistry

**Image 2.** Immunohistochemical analysis of paraffin-embedded human-colon, antibody was diluted at 1:200