

Datasheet for ABIN7189413  
**anti-LGALS3BP antibody (AA 100-160)**[Go to Product page](#)

## 1 Image

## Overview

Quantity:	100 µg
Target:	LGALS3BP
Binding Specificity:	AA 100-160
Reactivity:	Human
Host:	Rabbit
Clonality:	Polyclonal
Conjugate:	This LGALS3BP antibody is un-conjugated
Application:	Western Blotting (WB), ELISA

## Product Details

Immunogen:	Synthetic peptide from Human protein at AA range: 100-160
Isotype:	IgG
Cross-Reactivity:	Human, Mouse
Purification:	The antibody was affinity-purified from rabbit serum by affinity-chromatography using specific immunogen.

## Target Details

Target:	LGALS3BP
Alternative Name:	LGALS3BP ( <a href="#">LGALS3BP Products</a> )
Background:	90K antibody, 90K MAC 2 BP antibody, Basement membrane autoantigen p105 antibody,

## Target Details

BTBD17B antibody, Galectin 3 binding protein antibody, Galectin-3-binding protein antibody, L3 antigen antibody, Lectin galactoside binding soluble 3 binding protein antibody, Lectin galactoside-binding soluble 3-binding protein antibody, LG3BP\_HUMAN antibody, LGALS3BP antibody, M2BP antibody, Mac 2 binding protein antibody, Mac 2 BP antibody, Mac-2 BP antibody, Mac-2-binding protein antibody, Mac2 BP antibody, MAC2BP antibody, Serum protein 90K antibody, TANGO10B antibody, Transport and golgi organization 10 homolog B antibody, Tumor associated antigen 90K antibody, Tumor-associated antigen 90K antibody

UniProt: [Q08380](#)

## Application Details

Application Notes: WB:1:500-2000, ELISA:1:10000-20000,

Restrictions: For Research Use only

## Handling

Format: Liquid

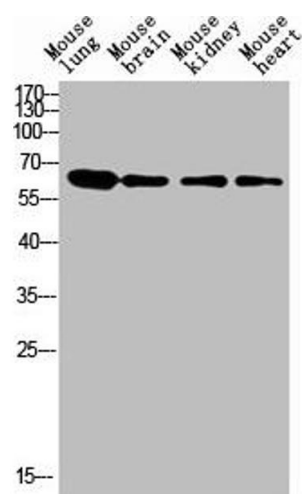
Buffer: PBS, pH 7.4, containing 0.02 % sodium azide as Preservative and 50 % Glycerol.

Preservative: Sodium azide

Precaution of Use: This product contains Sodium azide: a POISONOUS AND HAZARDOUS SUBSTANCE which should be handled by trained staff only.

Storage: -20 °C,-80 °C

Storage Comment: Upon receipt, store at -20°C or -80°C. Avoid repeated freeze.



Western Blotting

**Image 1.** Western blot analysis of human blood lysate, antibody was diluted at 1000. Secondary antibody was diluted at 1:20000