

Datasheet for ABIN7189415
anti-BTLA antibody (AA 101-150)[Go to Product page](#)

2 Images

Overview

Quantity:	100 µg
Target:	BTLA
Binding Specificity:	AA 101-150
Reactivity:	Human
Host:	Rabbit
Clonality:	Polyclonal
Conjugate:	This BTLA antibody is un-conjugated
Application:	ELISA, Immunohistochemistry (IHC)

Product Details

Immunogen:	Synthetic peptide from Human protein at AA range: 101-150
Isotype:	IgG
Cross-Reactivity:	Human
Purification:	The antibody was affinity-purified from rabbit serum by affinity-chromatography using specific immunogen.

Target Details

Target:	BTLA
Alternative Name:	BTLA (BTLA Products)
Background:	B and T lymphocyte associated protein antibody, B and T lymphocyte attenuator antibody, B

Target Details

and T lymphocyte associated antibody, B- and T-lymphocyte attenuator antibody, B- and T-lymphocyte-associated protein antibody, BTLA antibody, BTLA_HUMAN antibody, BTLA1 antibody, CD272 antibody, CD272 antigen antibody, FLJ16065 antibody, MGC129743 antibody

UniProt: [Q7Z6A9](#)

Pathways: [Cancer Immune Checkpoints](#)

Application Details

Application Notes: IHC:1:50-300, ELISA:1:10000-20000,

Restrictions: For Research Use only

Handling

Format: Liquid

Buffer: PBS, pH 7.4, containing 0.02 % sodium azide as Preservative and 50 % Glycerol.

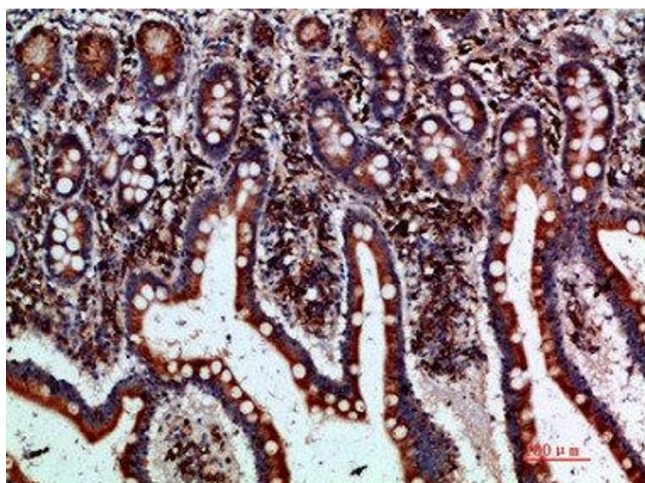
Preservative: Sodium azide

Precaution of Use: This product contains Sodium azide: a POISONOUS AND HAZARDOUS SUBSTANCE which should be handled by trained staff only.

Storage: -20 °C, -80 °C

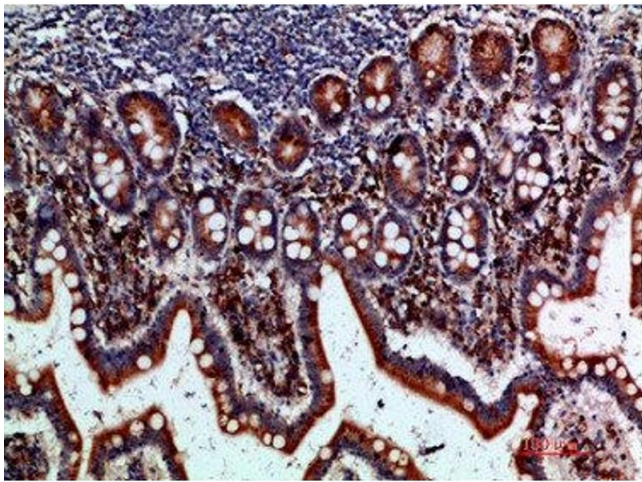
Storage Comment: Upon receipt, store at -20°C or -80°C. Avoid repeated freeze.

Images



Immunohistochemistry

Image 1. Immunohistochemical analysis of paraffin-embedded human-small-intestine, antibody was diluted at 1:200



Immunohistochemistry

Image 2. Immunohistochemical analysis of paraffin-embedded human-small-intestine, antibody was diluted at 1:200