



[Go to Product page](#)

Datasheet for ABIN7189417  
**anti-SEMA7A antibody (AA 101-150)**

1 Image

### Overview

Quantity:	100 µg
Target:	SEMA7A
Binding Specificity:	AA 101-150
Reactivity:	Human
Host:	Rabbit
Clonality:	Polyclonal
Conjugate:	This SEMA7A antibody is un-conjugated
Application:	ELISA, Immunohistochemistry (IHC)

### Product Details

Immunogen:	Synthetic peptide from Human protein at AA range: 101-150
Isotype:	IgG
Cross-Reactivity:	Human, Mouse, Rat
Purification:	The antibody was affinity-purified from rabbit serum by affinity-chromatography using specific immunogen.

### Target Details

Target:	SEMA7A
Alternative Name:	SEMA7A ( <a href="#">SEMA7A Products</a> )
Background:	CD 108 antibody, CD108 antibody, CD108 antigen antibody, CDw108 antibody, H Sema K1

## Target Details

---

antibody, H Sema L antibody, H-SEMA-K1 antibody, H-Sema-L antibody, JMH antibody, JMH blood group antigen antibody, John Milton Hagen blood group H Sema K1 antibody, John Milton Hagen human blood group Ag antibody, John-Milton-Hagen human blood group Ag antibody, MGC126692 antibody, MGC126696 antibody, SEM7A\_HUMAN antibody, Sema domain immunoglobulin domain (Ig) and GPI membrane anchor 7A antibody, Sema K1 antibody, Sema L antibody, SEMA7A antibody, SEMAK1 antibody, SEMAL antibody, Semaphorin 7A GPI membrane anchor antibody, Semaphorin K1 antibody, Semaphorin L antibody, Semaphorin-7A antibody, Semaphorin-K1 antibody, Semaphorin-L antibody, Semaphorin7a antibody

UniProt: [O75326](#)

Pathways: [Positive Regulation of Immune Effector Process](#), [Production of Molecular Mediator of Immune Response](#), [Regulation of Cell Size](#)

## Application Details

---

Application Notes: IHC:1:50-300, ELISA:1:10000-20000,

Restrictions: For Research Use only

## Handling

---

Format: Liquid

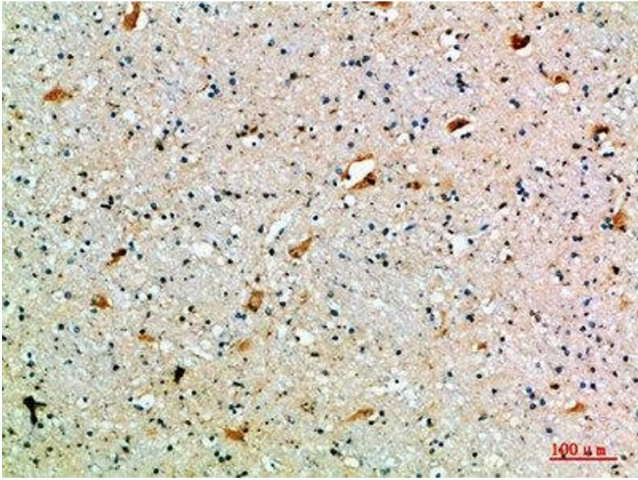
Buffer: PBS, pH 7.4, containing 0.02 % sodium azide as Preservative and 50 % Glycerol.

Preservative: Sodium azide

Precaution of Use: This product contains Sodium azide: a POISONOUS AND HAZARDOUS SUBSTANCE which should be handled by trained staff only.

Storage: -20 °C,-80 °C

Storage Comment: Upon receipt, store at -20°C or -80°C. Avoid repeated freeze.



### Immunohistochemistry

**Image 1.** Immunohistochemical analysis of paraffin-embedded human-brain, antibody was diluted at 1:200