



[Go to Product page](#)

Datasheet for ABIN7189431

anti-Fibronectin 1 antibody (AA 1268-1341)

2 Images

Overview

Quantity:	100 µg
Target:	Fibronectin 1 (FN1)
Binding Specificity:	AA 1268-1341
Reactivity:	Human
Host:	Rabbit
Clonality:	Polyclonal
Conjugate:	This Fibronectin 1 antibody is un-conjugated
Application:	ELISA, Immunohistochemistry (IHC)

Product Details

Immunogen:	Synthetic peptide from Human protein at AA range: 1268-1341
Isotype:	IgG
Cross-Reactivity:	Human
Purification:	The antibody was affinity-purified from rabbit serum by affinity-chromatography using specific immunogen.

Target Details

Target:	Fibronectin 1 (FN1)
Alternative Name:	FN1 (FN1 Products)
Background:	CIG antibody, Cold insoluble globulin antibody, Cold-insoluble globulin antibody,

Target Details

DKFZp686F10164 antibody, DKFZp686H0342 antibody, DKFZp686I1370 antibody, DKFZp686O13149 antibody, ED B antibody, Fibronectin 1 antibody, FINC antibody, FINC_HUMAN antibody, FN antibody, FN1 antibody, FNZ antibody, GFND antibody, GFND2 antibody, LETS antibody, Migration stimulating factor antibody, MSF antibody, Ugl-Y3 antibody

UniProt: [P02751](#)

Pathways: [Cellular Response to Molecule of Bacterial Origin](#), [Carbohydrate Homeostasis](#), [Autophagy](#)

Application Details

Application Notes: IHC:1:50-1:300, ELISA:1:5000-1:20000,

Restrictions: For Research Use only

Handling

Format: Liquid

Buffer: PBS, pH 7.4, containing 0.02 % sodium azide as Preservative and 50 % Glycerol.

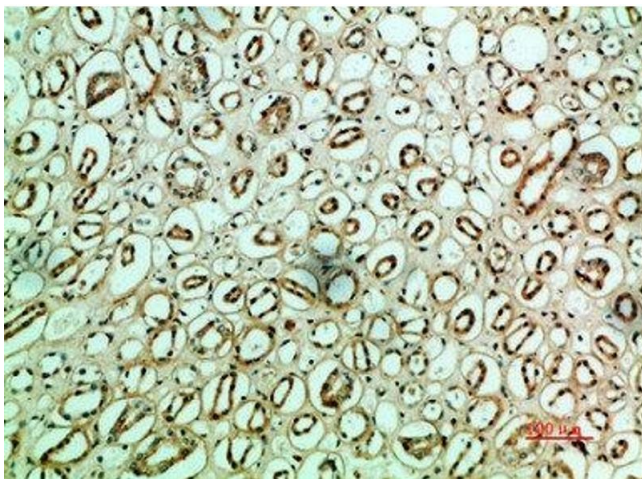
Preservative: Sodium azide

Precaution of Use: This product contains Sodium azide: a POISONOUS AND HAZARDOUS SUBSTANCE which should be handled by trained staff only.

Storage: -20 °C,-80 °C

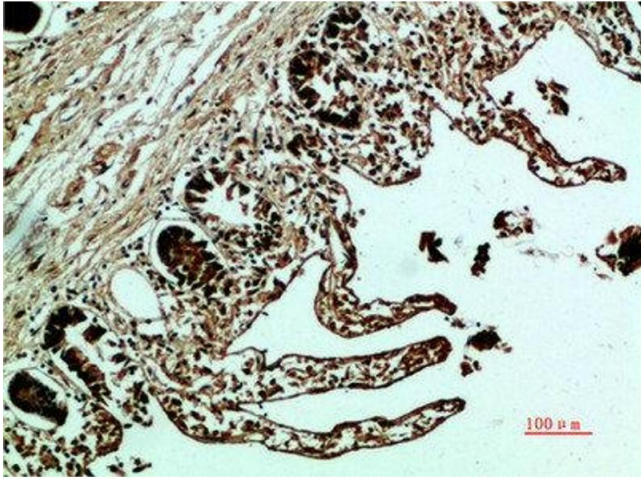
Storage Comment: Upon receipt, store at -20°C or -80°C. Avoid repeated freeze.

Images



Immunohistochemistry

Image 1. Immunohistochemical analysis of paraffin-embedded human-kidney, antibody was diluted at 1:200



Immunohistochemistry

Image 2. Immunohistochemical analysis of paraffin-embedded human-colon, antibody was diluted at 1:200