



[Go to Product page](#)

Datasheet for ABIN7189434
anti-IRF3 antibody (AA 1268-1341)

3 Images

Overview

Quantity:	100 µg
Target:	IRF3
Binding Specificity:	AA 1268-1341
Reactivity:	Human
Host:	Rabbit
Clonality:	Polyclonal
Conjugate:	This IRF3 antibody is un-conjugated
Application:	Western Blotting (WB), ELISA, Immunohistochemistry (IHC)

Product Details

Immunogen:	Synthetic peptide from Human protein at AA range: 1268-1341
Isotype:	IgG
Cross-Reactivity:	Human
Purification:	The antibody was affinity-purified from rabbit serum by affinity-chromatography using specific immunogen.

Target Details

Target:	IRF3
Alternative Name:	IRF3 (IRF3 Products)
Background:	IIAE7 antibody, Interferon regulatory factor 3 antibody, IRF 3 antibody, IRF-3 antibody, IRF3

Target Details

antibody, IRF3_HUMAN antibody, MGC94729 antibody

UniProt: [Q14653](#)

Pathways: [TLR Signaling](#), [Activation of Innate immune Response](#), [Cellular Response to Molecule of Bacterial Origin](#), [Hepatitis C](#), [Toll-Like Receptors Cascades](#)

Application Details

Application Notes: WB:1:1000-1:3000, IHC:1:50-1:300, ELISA:1:5000-1:20000,

Restrictions: For Research Use only

Handling

Format: Liquid

Buffer: PBS, pH 7.4, containing 0.02 % sodium azide as Preservative and 50 % Glycerol.

Preservative: Sodium azide

Precaution of Use: This product contains Sodium azide: a POISONOUS AND HAZARDOUS SUBSTANCE which should be handled by trained staff only.

Storage: -20 °C,-80 °C

Storage Comment: Upon receipt, store at -20°C or -80°C. Avoid repeated freeze.

Images



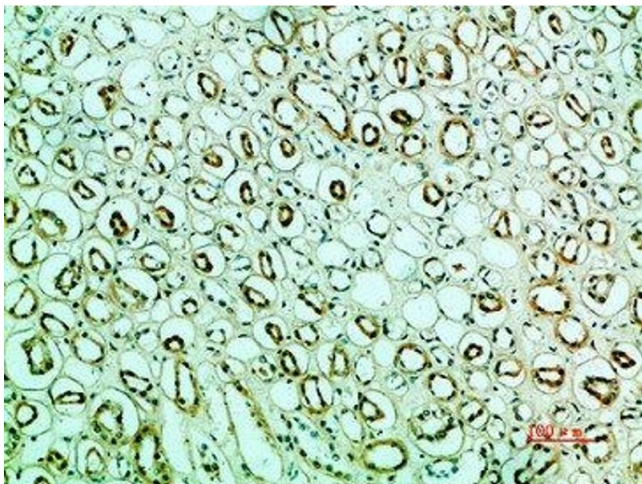
Immunohistochemistry

Image 1. Immunohistochemical analysis of paraffin-embedded human-tonsils, antibody was diluted at 1:200



Western Blotting

Image 2. Western blot analysis of HeLa Cell Lysate, antibody was diluted at 1:1000. Secondary antibody was diluted at 1:20000



Immunohistochemistry

Image 3. Immunohistochemical analysis of paraffin-embedded human kidney, antibody was diluted at 1:200