



[Go to Product page](#)

Datasheet for ABIN7189437

anti-PLK2 antibody (AA 1268-1341)

1 Image

Overview

Quantity:	100 µg
Target:	PLK2
Binding Specificity:	AA 1268-1341
Reactivity:	Human
Host:	Rabbit
Clonality:	Polyclonal
Conjugate:	This PLK2 antibody is un-conjugated
Application:	ELISA, Immunohistochemistry (IHC)

Product Details

Immunogen:	Synthetic peptide from Human protein at AA range: 1268-1341
Isotype:	IgG
Cross-Reactivity:	Human, Rat
Purification:	The antibody was affinity-purified from rabbit serum by affinity-chromatography using specific immunogen.

Target Details

Target:	PLK2
Alternative Name:	PLK2 (PLK2 Products)
Background:	HPlk2 antibody, hSNK antibody, PLK-2 antibody, Plk2 antibody, PLK2_HUMAN antibody, Polo

Target Details

like kinase 2 antibody, Polo-like kinase 2 antibody, Serine/threonine protein kinase PLK2 antibody, Serine/threonine protein kinase SNK antibody, Serine/threonine-protein kinase PLK2 antibody, Serine/threonine-protein kinase SNK antibody, Serum Induced Kinase antibody, Serum-inducible kinase antibody, SNK antibody

UniProt: [Q9NYY3](#)

Application Details

Application Notes: IHC:1:50-1:300, ELISA:1:5000-1:20000,

Restrictions: For Research Use only

Handling

Format: Liquid

Buffer: PBS, pH 7.4, containing 0.02 % sodium azide as Preservative and 50 % Glycerol.

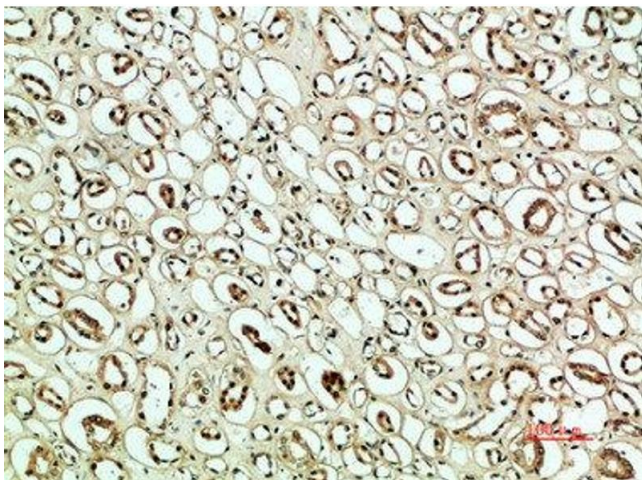
Preservative: Sodium azide

Precaution of Use: This product contains Sodium azide: a POISONOUS AND HAZARDOUS SUBSTANCE which should be handled by trained staff only.

Storage: -20 °C,-80 °C

Storage Comment: Upon receipt, store at -20°C or -80°C. Avoid repeated freeze.

Images



Immunohistochemistry

Image 1. Immunohistochemical analysis of paraffin-embedded human-kidney, antibody was diluted at 1:200