

Datasheet for ABIN7189438

anti-PMEPA1 antibody (AA 1268-1341)[Go to Product page](#)**1** Image

Overview

Quantity:	100 µg
Target:	PMEPA1
Binding Specificity:	AA 1268-1341
Reactivity:	Human
Host:	Rabbit
Clonality:	Polyclonal
Conjugate:	This PMEPA1 antibody is un-conjugated
Application:	Western Blotting (WB), ELISA

Product Details

Immunogen:	Synthetic peptide from Human protein at AA range: 1268-1341
Isotype:	IgG
Cross-Reactivity:	Human
Purification:	The antibody was affinity-purified from rabbit serum by affinity-chromatography using specific immunogen.

Target Details

Target:	PMEPA1
Alternative Name:	PMEPA1 (PMEPA1 Products)
Background:	PMEPA_HUMAN antibody, PMEPA1 antibody, Prostate transmembrane protein, androgen

Target Details

induced 1 antibody, Solid tumor associated 1 protein antibody, Solid tumor-associated 1 protein antibody, STAG1 antibody, TMEPAI antibody, Transmembrane prostate androgen induced protein antibody, Transmembrane prostate androgen-induced protein antibody, Transmembrane, prostate androgen induced RNA antibody

UniProt: [Q969W9](#)

Pathways: [Intracellular Steroid Hormone Receptor Signaling Pathway](#)

Application Details

Application Notes: WB:1:500-1:2000, ELISA:1:5000-1:20000,

Restrictions: For Research Use only

Handling

Format: Liquid

Buffer: PBS, pH 7.4, containing 0.02 % sodium azide as Preservative and 50 % Glycerol.

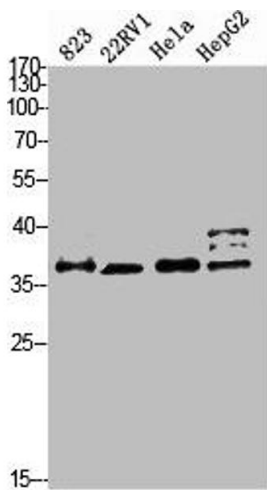
Preservative: Sodium azide

Precaution of Use: This product contains Sodium azide: a POISONOUS AND HAZARDOUS SUBSTANCE which should be handled by trained staff only.

Storage: -20 °C,-80 °C

Storage Comment: Upon receipt, store at -20°C or -80°C. Avoid repeated freeze.

Images



Western Blotting

Image 1. Western blot analysis of 823 22RV1 HELA HEPG2 Cell Lysate, antibody was diluted at 1:2000. Secondary antibody was diluted at 1:20000