

Datasheet for ABIN7189439  
**anti-PTH1R antibody (AA 1268-1341)**[Go to Product page](#)

## 3 Images

## Overview

Quantity:	100 µg
Target:	PTH1R
Binding Specificity:	AA 1268-1341
Reactivity:	Human
Host:	Rabbit
Clonality:	Polyclonal
Conjugate:	This PTH1R antibody is un-conjugated
Application:	Western Blotting (WB), Immunohistochemistry (IHC), ELISA

## Product Details

Immunogen:	Synthetic peptide from Human protein at AA range: 1268-1341
Isotype:	IgG
Cross-Reactivity:	Human
Purification:	The antibody was affinity-purified from rabbit serum by affinity-chromatography using specific immunogen.

## Target Details

Target:	PTH1R
Alternative Name:	PTH1R ( <a href="#">PTH1R Products</a> )
Background:	MGC138426 antibody, MGC138452 antibody, Parathyroid hormone 1 receptor antibody,

## Target Details

Parathyroid hormone/parathyroid hormone related peptide receptor antibody, Parathyroid hormone/parathyroid hormone related protein receptor antibody, Parathyroid hormone/parathyroid hormone-related peptide receptor antibody, PTH receptor antibody, PTH/PTHr receptor antibody, PTH/PTHrP receptor antibody, PTH/PTHrP type I receptor antibody, PTH1 receptor antibody, PTH1R antibody, PTH1R\_HUMAN antibody, PTHR 1 antibody, PTHR antibody, PTHR1 antibody

UniProt: [Q03431](#)

Pathways: [Regulation of Carbohydrate Metabolic Process](#)

## Application Details

Application Notes: WB:1:500-1:2000, IHC:1:50-1:300, ELISA:1:5000-1:20000,

Restrictions: For Research Use only

## Handling

Format: Liquid

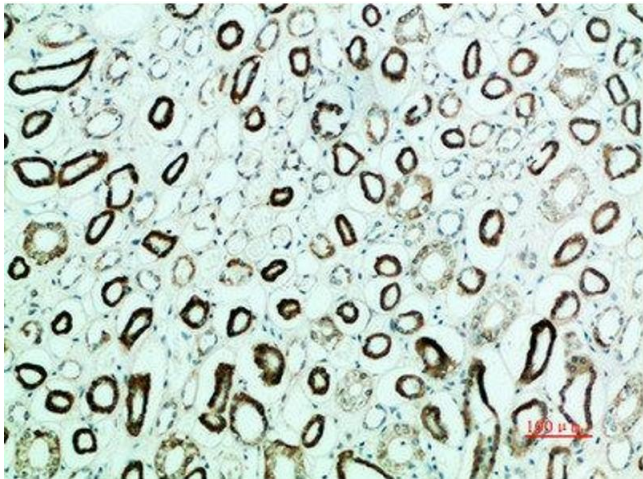
Buffer: PBS, pH 7.4, containing 0.02 % sodium azide as Preservative and 50 % Glycerol.

Preservative: Sodium azide

Precaution of Use: This product contains Sodium azide: a POISONOUS AND HAZARDOUS SUBSTANCE which should be handled by trained staff only.

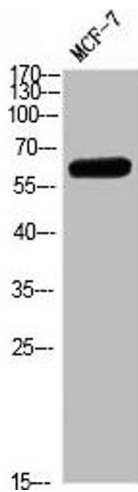
Storage: -20 °C, -80 °C

Storage Comment: Upon receipt, store at -20°C or -80°C. Avoid repeated freeze.



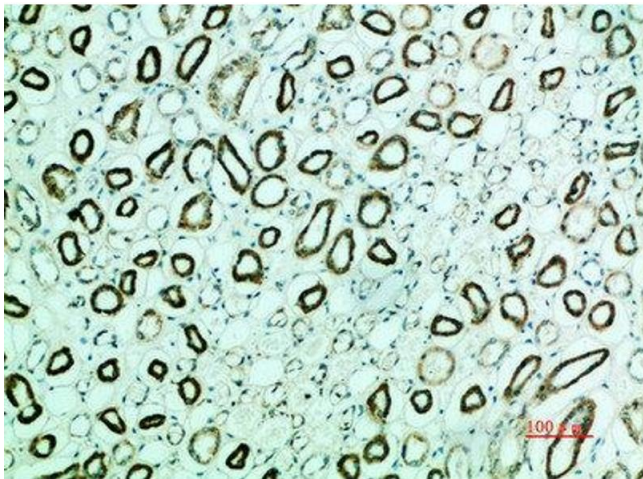
#### Immunohistochemistry

**Image 1.** Immunohistochemical analysis of paraffin-embedded human-kidney, antibody was diluted at 1:200



#### Western Blotting

**Image 2.** Western blot analysis of MCF7 Cell Lysate, antibody was diluted at 1:1000. Secondary antibody was diluted at 1:20000



#### Immunohistochemistry

**Image 3.** Immunohistochemical analysis of paraffin-embedded human-kidney, antibody was diluted at 1:200