



[Go to Product page](#)

Datasheet for ABIN7189441  
**anti-TERT antibody (AA 1268-1341)**

2 Images

Overview

Quantity:	100 µg
Target:	TERT
Binding Specificity:	AA 1268-1341
Reactivity:	Human
Host:	Rabbit
Clonality:	Polyclonal
Conjugate:	This TERT antibody is un-conjugated
Application:	ELISA, Western Blotting (WB), Immunohistochemistry (IHC)

Product Details

Immunogen:	Synthetic peptide from Human protein at AA range: 1268-1341
Isotype:	IgG
Cross-Reactivity:	Human
Purification:	The antibody was affinity-purified from rabbit serum by affinity-chromatography using specific immunogen.

Target Details

Target:	TERT
Alternative Name:	TERT ( <a href="#">TERT Products</a> )
Background:	CMM9 antibody, DKCA2 antibody, DKCB4 antibody, EST2 antibody, HEST2 antibody, htert

## Target Details

antibody, hTERT antibody, PFBMFT1 antibody, TCS1 antibody, Telomerase associated protein 2 antibody, Telomerase catalytic subunit antibody, Telomerase reverse transcriptase antibody, Telomerase-associated protein 2 antibody, Telomere Reverse Transcriptase antibody, TERT antibody, TERT\_HUMAN antibody, TP2 antibody, TRT antibody

UniProt: [O14746](#)

Pathways: [Telomere Maintenance](#)

## Application Details

Application Notes: WB:1:500-1:2000, IHC:1:50-1:300, ELISA:1:5000-1:20000,

Restrictions: For Research Use only

## Handling

Format: Liquid

Buffer: PBS, pH 7.4, containing 0.02 % sodium azide as Preservative and 50 % Glycerol.

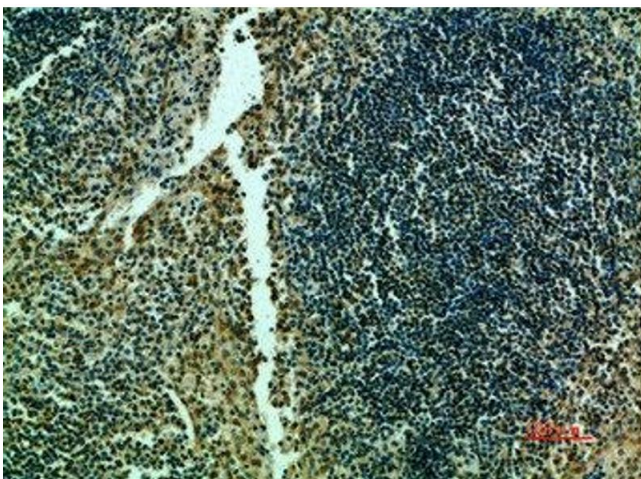
Preservative: Sodium azide

Precaution of Use: This product contains Sodium azide: a POISONOUS AND HAZARDOUS SUBSTANCE which should be handled by trained staff only.

Storage: -20 °C,-80 °C

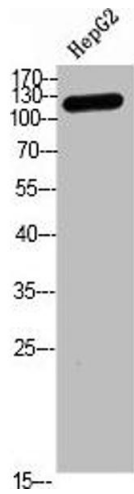
Storage Comment: Upon receipt, store at -20°C or -80°C. Avoid repeated freeze.

## Images



### Immunohistochemistry

**Image 1.** Immunohistochemical analysis of paraffin-embedded human-tonsils, antibody was diluted at 1:200



### Western Blotting

**Image 2.** Western blot analysis of hepg2 Cell Lysate, antibody was diluted at 1:1000