



[Go to Product page](#)

Datasheet for ABIN7189443

## anti-E2F3 antibody (acLys168)

### 1 Image

#### Overview

Quantity:	100 µg
Target:	E2F3
Binding Specificity:	acLys168
Reactivity:	Human
Host:	Rabbit
Clonality:	Polyclonal
Conjugate:	This E2F3 antibody is un-conjugated
Application:	Western Blotting (WB), ELISA

#### Product Details

Immunogen:	Synthetic peptide from Human protein at AA range: 130-200
Isotype:	IgG
Cross-Reactivity:	Human, Mouse, Rat
Purification:	The antibody was affinity-purified from rabbit serum by affinity-chromatography using specific immunogen.

#### Target Details

Target:	E2F3
Abstract:	<a href="#">E2F3 Products</a>
Background:	DKFZp686C18211 antibody, E2F 3 antibody, E2F transcription factor 3 antibody, E2F-3

## Target Details

antibody, E2F3 antibody, E2F3\_HUMAN antibody, KIAA0075 antibody, MGC104598 antibody, Transcription factor E2F 3 antibody, Transcription factor E2F3 antibody

UniProt: [O00716](#)

## Application Details

Application Notes: WB:1:500-10000, ELISA:1:10000,

Restrictions: For Research Use only

## Handling

Format: Liquid

Buffer: PBS, pH 7.4, containing 0.02 % sodium azide as Preservative and 50 % Glycerol.

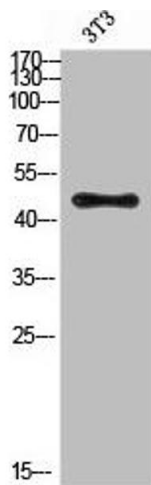
Preservative: Sodium azide

Precaution of Use: This product contains Sodium azide: a POISONOUS AND HAZARDOUS SUBSTANCE which should be handled by trained staff only.

Storage: -20 °C,-80 °C

Storage Comment: Upon receipt, store at -20°C or -80°C. Avoid repeated freeze.

## Images



### Western Blotting

**Image 1.** Western Blot analysis of 3T3 cells using Antibody diluted at 500. Secondary antibody was diluted at 1:20000