

Datasheet for ABIN7189446
anti-CACTIN antibody (AA 141-190)[Go to Product page](#)

1 Image

Overview

Quantity:	100 µg
Target:	CACTIN
Binding Specificity:	AA 141-190
Reactivity:	Human
Host:	Rabbit
Clonality:	Polyclonal
Conjugate:	This CACTIN antibody is un-conjugated
Application:	Western Blotting (WB), ELISA

Product Details

Immunogen:	Synthetic peptide from Human protein at AA range: 141-190
Isotype:	IgG
Cross-Reactivity:	Human, Mouse, Rat
Purification:	The antibody was affinity-purified from rabbit serum by affinity-chromatography using specific immunogen.

Target Details

Target:	CACTIN
Alternative Name:	CACTIN (CACTIN Products)
Background:	C19orf29 antibody, Cactin antibody, CS029_HUMAN antibody, FLJ17482 antibody, FLJ59622

Target Details

antibody, fSAPc antibody, Functional spliceosome associated protein c antibody, NY REN 24 antibody, NY REN 24 antigen antibody, Renal carcinoma antigen NY-REN-24 antibody, Uncharacterized protein C19orf29 antibody

UniProt: [Q8WUQ7](#)

Pathways: [Cellular Response to Molecule of Bacterial Origin](#)

Application Details

Application Notes: WB:1:500-10000, ELISA:1:10000,

Restrictions: For Research Use only

Handling

Format: Liquid

Buffer: PBS, pH 7.4, containing 0.02 % sodium azide as Preservative and 50 % Glycerol.

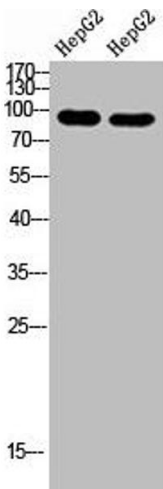
Preservative: Sodium azide

Precaution of Use: This product contains Sodium azide: a POISONOUS AND HAZARDOUS SUBSTANCE which should be handled by trained staff only.

Storage: -20 °C,-80 °C

Storage Comment: Upon receipt, store at -20°C or -80°C. Avoid repeated freeze.

Images



Western Blotting

Image 1. Western Blot analysis of hepg2 cells using Antibody diluted at 1000. Secondary antibody was diluted at 1:20000