



[Go to Product page](#)

Datasheet for ABIN7189450
anti-CCR5 antibody (AA 151-200)

3 Images

Overview

Quantity:	100 µg
Target:	CCR5
Binding Specificity:	AA 151-200
Reactivity:	Human
Host:	Rabbit
Clonality:	Polyclonal
Conjugate:	This CCR5 antibody is un-conjugated
Application:	Western Blotting (WB), ELISA, Immunohistochemistry (IHC)

Product Details

Immunogen:	Synthetic peptide from Human protein at AA range: 151-200
Isotype:	IgG
Cross-Reactivity:	Human
Purification:	The antibody was affinity-purified from rabbit serum by affinity-chromatography using specific immunogen.

Target Details

Target:	CCR5
Alternative Name:	CCR5 (CCR5 Products)
Background:	AM4 7 antibody, C C chemokine receptor type 5 antibody, C C CKR 5 antibody, C-C chemokine

Target Details

receptor type 5 antibody, C-C CKR-5 antibody, C-C motif chemokine receptor 5 A159A antibody, CC Chemokine Receptor 5 antibody, CC Chemokine Receptor Type 5 antibody, CC CKR 5 antibody, CC-CKR-5 antibody, CCKR 5 antibody, CCKR5 antibody, CCR 5 antibody, CCR-5 antibody, CCR5 antibody, CCR5 chemokine (C C motif) receptor 5 antibody, CCR5_HUMAN antibody, CD 195 antibody, CD195 antibody, CD195 Antigen antibody, Chemokine C C motif receptor 5 antibody, Chemokine receptor CCR5 antibody, CHEMR13 antibody, CKR 5 antibody, CKR5 antibody, CMKBR 5 antibody, CMKBR5 antibody, FLJ78003 antibody, HIV 1 Fusion Coreceptor antibody, HIV-1 fusion coreceptor antibody, HIV1 fusion coreceptor antibody, IDDM22 antibody, MIP-1 alpha receptor antibody

UniProt: [P51681](#)

Pathways: [Cellular Response to Molecule of Bacterial Origin](#), [cAMP Metabolic Process](#), [Regulation of Cell Size](#)

Application Details

Application Notes: WB:1:500-2000, IHC:1:50-300, ELISA:1:10000-20000,

Restrictions: For Research Use only

Handling

Format: Liquid

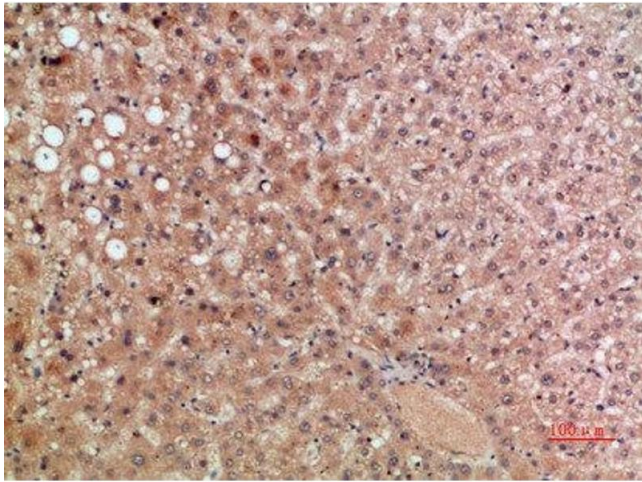
Buffer: PBS, pH 7.4, containing 0.02 % sodium azide as Preservative and 50 % Glycerol.

Preservative: Sodium azide

Precaution of Use: This product contains Sodium azide: a POISONOUS AND HAZARDOUS SUBSTANCE which should be handled by trained staff only.

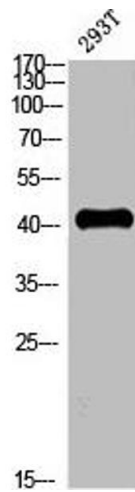
Storage: -20 °C,-80 °C

Storage Comment: Upon receipt, store at -20°C or -80°C. Avoid repeated freeze.



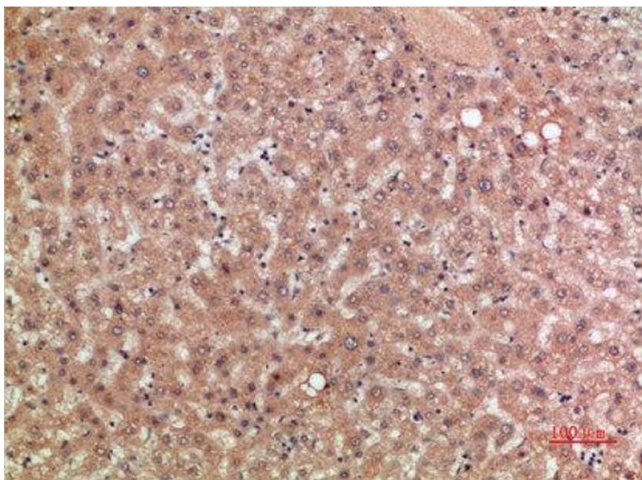
Immunohistochemistry

Image 1. Immunohistochemical analysis of paraffin-embedded human-liver, antibody was diluted at 1:200



Western Blotting

Image 2. Western blot analysis of 293T whole cell lysate, antibody was diluted at 2000. Secondary antibody was diluted at 1:20000



Immunohistochemistry

Image 3. Immunohistochemical analysis of paraffin-embedded human-liver, antibody was diluted at 1:200