

Datasheet for ABIN7189451  
**anti-L1CAM antibody (AA 151-200)**[Go to Product page](#)

## 4 Images

## Overview

|                      |                                      |
|----------------------|--------------------------------------|
| Quantity:            | 100 µg                               |
| Target:              | L1CAM                                |
| Binding Specificity: | AA 151-200                           |
| Reactivity:          | Human                                |
| Host:                | Rabbit                               |
| Clonality:           | Polyclonal                           |
| Conjugate:           | This L1CAM antibody is un-conjugated |
| Application:         | Immunohistochemistry (IHC), ELISA    |

## Product Details

|                   |   |
|-------------------|---|
| Immunogen:        | Synthetic peptide from Human protein at AA range: 151-200   |
| Isotype:          | IgG   |
| Cross-Reactivity: | Human, Mouse, Rat   |
| Purification:     | The antibody was affinity-purified from rabbit serum by affinity-chromatography using specific immunogen. |

## Target Details

|                   |  |
|-------------------|--|
| Target:           | L1CAM  |
| Alternative Name: | L1CAM ( <a href="#">L1CAM Products</a> )   |
| Background:       | Antigen identified by monoclonal antibody R1 antibody, CAML1 antibody, CD171 antibody, |

## Target Details

CD171 antigen antibody, HSAS antibody, HSAS1 antibody, Hyd antibody, L1 antibody, L1 cell adhesion molecule antibody, L1-NCAM antibody, L1cam antibody, L1CAM\_HUMAN antibody, MASA antibody, MIC5 antibody, N CAML1 antibody, N-CAM-L1 antibody, NCAM-L1 antibody, NCAML1 antibody, Nerve-growth factor-inducible large external glycoprotein antibody, Neural cell adhesion molecule L1 antibody, NILE antibody, OTTHUMP00000025992 antibody, S10 antibody, SPG1 antibody

UniProt: [P32004](#)

Pathways: [Synaptic Membrane](#)

## Application Details

Application Notes: IHC:1:50-300, ELISA:1:10000-20000,

Restrictions: For Research Use only

## Handling

Format: Liquid

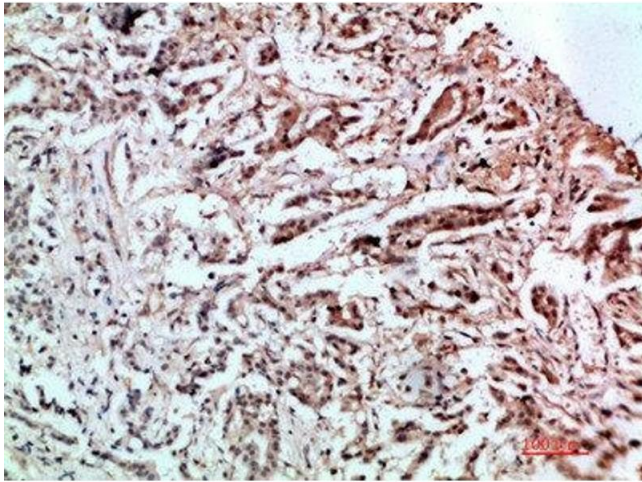
Buffer: PBS, pH 7.4, containing 0.02 % sodium azide as Preservative and 50 % Glycerol.

Preservative: Sodium azide

Precaution of Use: This product contains Sodium azide: a POISONOUS AND HAZARDOUS SUBSTANCE which should be handled by trained staff only.

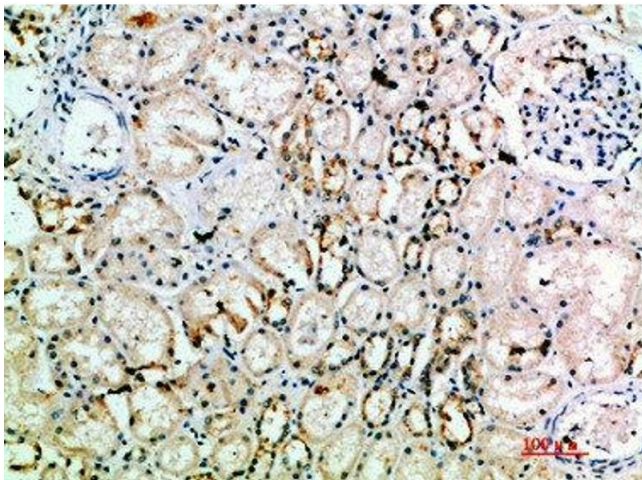
Storage: -20 °C, -80 °C

Storage Comment: Upon receipt, store at -20°C or -80°C. Avoid repeated freeze.



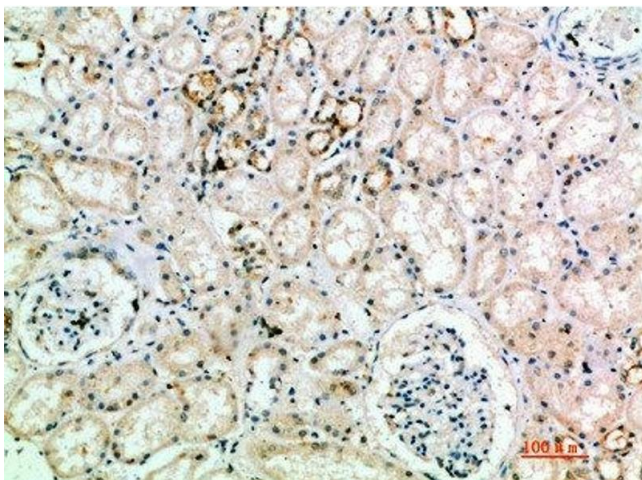
#### Immunohistochemistry

**Image 1.** Immunohistochemical analysis of paraffin-embedded human-stomach-cancer, antibody was diluted at 1:200



#### Immunohistochemistry

**Image 2.** Immunohistochemical analysis of paraffin-embedded human-kidney, antibody was diluted at 1:200



#### Immunohistochemistry

**Image 3.** Immunohistochemical analysis of paraffin-embedded human-kidney, antibody was diluted at 1:200

Please check the [product details page](#) for more images. Overall 4 images are available for ABIN7189451.