

Datasheet for ABIN7189453
anti-CSH1 antibody (AA 161-210)[Go to Product page](#)

1 Image

Overview

Quantity:	100 µg
Target:	CSH1
Binding Specificity:	AA 161-210
Reactivity:	Human
Host:	Rabbit
Clonality:	Polyclonal
Conjugate:	This CSH1 antibody is un-conjugated
Application:	Western Blotting (WB), ELISA

Product Details

Immunogen:	Synthetic peptide from Human protein at AA range: 161-210
Isotype:	IgG
Cross-Reactivity:	Human
Purification:	The antibody was affinity-purified from rabbit serum by affinity-chromatography using specific immunogen.

Target Details

Target:	CSH1
Alternative Name:	CSH1 (CSH1 Products)
Background:	CSH1, CSH2

Target Details

UniProt:	P01243
Pathways:	Response to Growth Hormone Stimulus

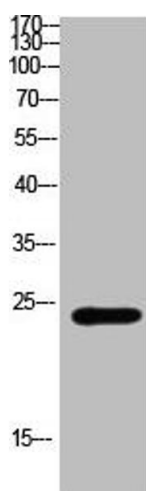
Application Details

Application Notes:	WB:1:500-10000, ELISA:1:10000,
Restrictions:	For Research Use only

Handling

Format:	Liquid
Buffer:	PBS, pH 7.4, containing 0.02 % sodium azide as Preservative and 50 % Glycerol.
Preservative:	Sodium azide
Precaution of Use:	This product contains Sodium azide: a POISONOUS AND HAZARDOUS SUBSTANCE which should be handled by trained staff only.
Storage:	-20 °C,-80 °C
Storage Comment:	Upon receipt, store at -20°C or -80°C. Avoid repeated freeze.

Images



Western Blotting

Image 1. Western Blot analysis of mouse-brain cells using Antibody diluted at 800. Secondary antibody was diluted at 1:20000