

Datasheet for ABIN7189454
anti-KLRK1 antibody (AA 167-216)

3 Images

[Go to Product page](#)

Overview

Quantity:	100 µg
Target:	KLRK1
Binding Specificity:	AA 167-216
Reactivity:	Human
Host:	Rabbit
Clonality:	Polyclonal
Conjugate:	This KLRK1 antibody is un-conjugated
Application:	Immunohistochemistry (IHC), ELISA

Product Details

Immunogen:	Synthetic peptide from Human protein at AA range: 167-216
Isotype:	IgG
Cross-Reactivity:	Human
Purification:	The antibody was affinity-purified from rabbit serum by affinity-chromatography using specific immunogen.

Target Details

Target:	KLRK1
Alternative Name:	KLRK1 (KLRK1 Products)
Background:	CD314 antibody, CD314 antigen antibody, D12S2489E antibody, Killer cell lectin like receptor

Target Details

subfamily K member 1 antibody, Killer cell lectin-like receptor subfamily K member 1 antibody, KLR antibody, KLRC4 KLRK1 readthrough antibody, KLRK1 antibody, NK cell receptor D antibody, NK lectin-like receptor antibody, NKG2 D activating NK receptor antibody, NKG2 D type II integral membrane protein antibody, NKG2-D antibody, NKG2-D type II integral membrane protein antibody, NKG2-D-activating NK receptor antibody, Nkg2d antibody, NKG2D_HUMAN antibody, NKLLR antibody, NKR P2 antibody, Nkrp2 antibody

UniProt: [P26718](#)

Pathways: [Activation of Innate immune Response](#), [Cellular Response to Molecule of Bacterial Origin](#), [Regulation of Leukocyte Mediated Immunity](#), [Positive Regulation of Immune Effector Process](#)

Application Details

Application Notes: IHC:1:50-300, ELISA:1:10000-20000,

Restrictions: For Research Use only

Handling

Format: Liquid

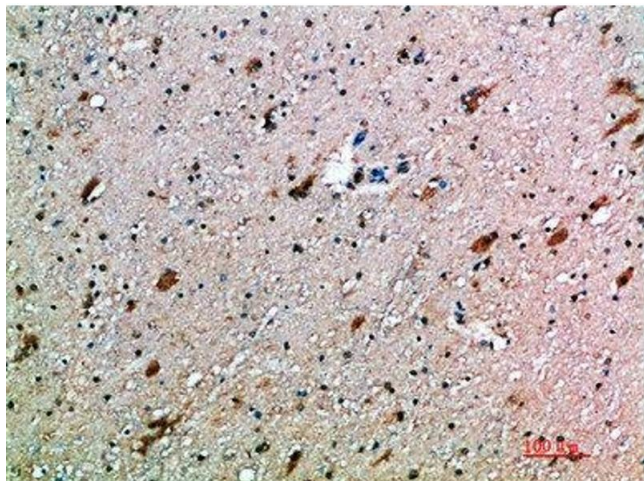
Buffer: PBS, pH 7.4, containing 0.02 % sodium azide as Preservative and 50 % Glycerol.

Preservative: Sodium azide

Precaution of Use: This product contains Sodium azide: a POISONOUS AND HAZARDOUS SUBSTANCE which should be handled by trained staff only.

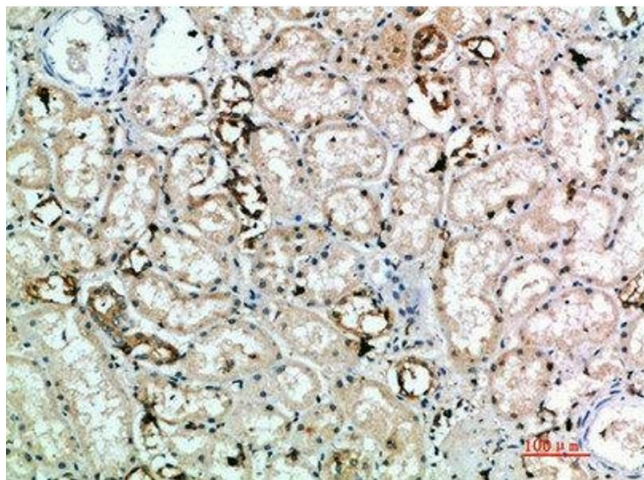
Storage: -20 °C, -80 °C

Storage Comment: Upon receipt, store at -20°C or -80°C. Avoid repeated freeze.



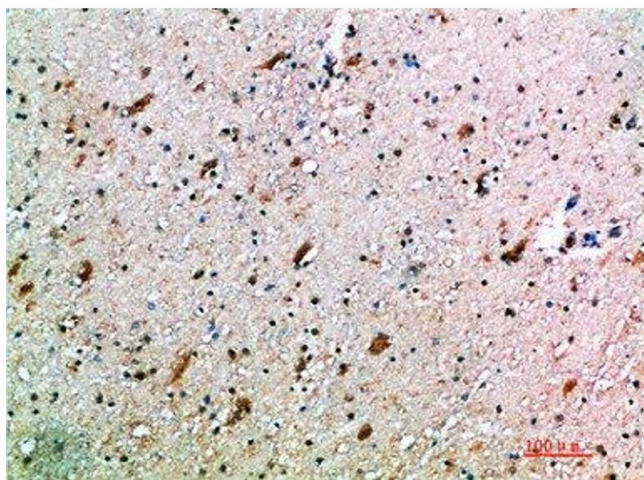
Immunohistochemistry

Image 1. Immunohistochemical analysis of paraffin-embedded human-brain, antibody was diluted at 1:200



Immunohistochemistry

Image 2. Immunohistochemical analysis of paraffin-embedded human-kidney, antibody was diluted at 1:200



Immunohistochemistry

Image 3. Immunohistochemical analysis of paraffin-embedded human-brain, antibody was diluted at 1:200