



[Go to Product page](#)

Datasheet for ABIN7189455
anti-CLCF1 antibody (AA 171-220)

2 Images

Overview

Quantity:	100 µg
Target:	CLCF1
Binding Specificity:	AA 171-220
Reactivity:	Human
Host:	Rabbit
Clonality:	Polyclonal
Conjugate:	This CLCF1 antibody is un-conjugated
Application:	Immunohistochemistry (IHC), ELISA

Product Details

Immunogen:	Synthetic peptide from Human protein at AA range: 171-220
Isotype:	IgG
Cross-Reactivity:	Human, Mouse, Rat
Purification:	The antibody was affinity-purified from rabbit serum by affinity-chromatography using specific immunogen.

Target Details

Target:	CLCF1
Alternative Name:	CLCF1 (CLCF1 Products)
Background:	B cell stimulating factor 3 antibody, B-cell-stimulating factor 3 antibody, BSF 3 antibody, BSF-3

Target Details

antibody, BSF3 antibody, Cardiotrophin like cytokine antibody, Cardiotrophin like cytokine factor 1 antibody, Cardiotrophin-like cytokine factor 1 antibody, CISS 2 antibody, CISS2 antibody, CLC antibody, CLCF 1 antibody, Clcf1 antibody, CLCF1_HUMAN antibody, Cold induced sweating syndrome 2 antibody, CRLF 1 associated cytokine like factor 1 antibody, CRLF1 associated cytokine like factor 1 antibody, Neurotrophin 1 antibody, Neurotrophin 1/B cell stimulating factor 3 antibody, Neurotrophin1 antibody, NNT 1 antibody, NNT-1 antibody, Novel neurotrophin 1 antibody, Novel neurotrophin-1 antibody, NR 6 antibody, NR6 antibody

UniProt: [Q9UBD9](#)

Pathways: [Regulation of Leukocyte Mediated Immunity](#), [Positive Regulation of Immune Effector Process](#), [Production of Molecular Mediator of Immune Response](#)

Application Details

Application Notes: IHC:1:50-300, ELISA:1:10000-20000,

Restrictions: For Research Use only

Handling

Format: Liquid

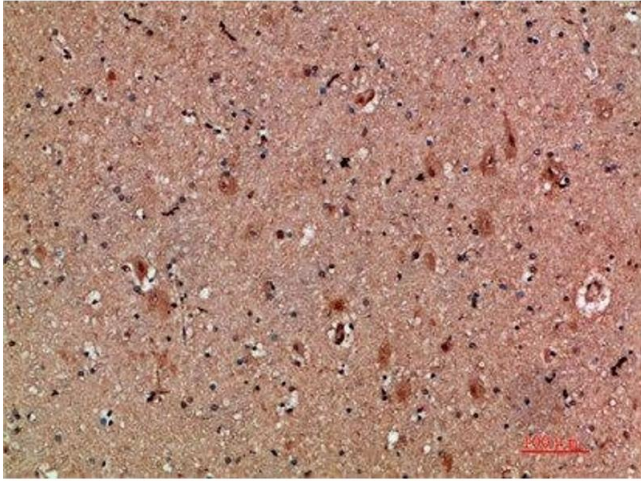
Buffer: PBS, pH 7.4, containing 0.02 % sodium azide as Preservative and 50 % Glycerol.

Preservative: Sodium azide

Precaution of Use: This product contains Sodium azide: a POISONOUS AND HAZARDOUS SUBSTANCE which should be handled by trained staff only.

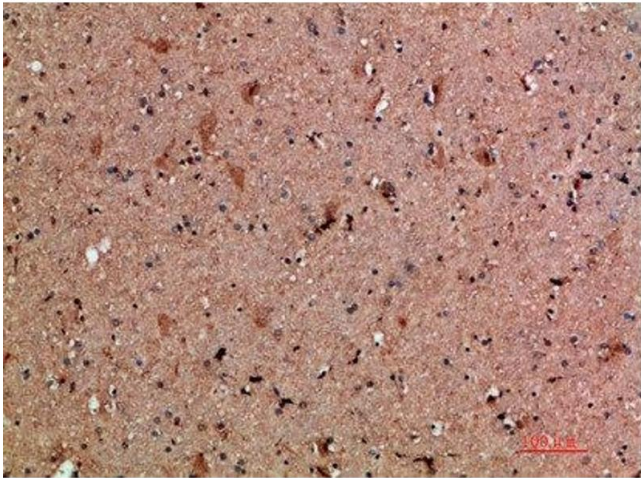
Storage: -20 °C,-80 °C

Storage Comment: Upon receipt, store at -20°C or -80°C. Avoid repeated freeze.



Immunohistochemistry

Image 1. Immunohistochemical analysis of paraffin-embedded human-brain, antibody was diluted at 1:200



Immunohistochemistry

Image 2. Immunohistochemical analysis of paraffin-embedded human-brain, antibody was diluted at 1:200