



[Go to Product page](#)

Datasheet for ABIN7189456
anti-ART4 antibody (AA 181-230)

2 Images

Overview

Quantity:	100 µg
Target:	ART4
Binding Specificity:	AA 181-230
Reactivity:	Human
Host:	Rabbit
Clonality:	Polyclonal
Conjugate:	This ART4 antibody is un-conjugated
Application:	ELISA, Immunohistochemistry (IHC)

Product Details

Immunogen:	Synthetic peptide from Human protein at AA range: 181-230
Isotype:	IgG
Cross-Reactivity:	Human
Purification:	The antibody was affinity-purified from rabbit serum by affinity-chromatography using specific immunogen.

Target Details

Target:	ART4
Alternative Name:	ART4 (ART4 Products)
Background:	ART4 antibody, DO antibody, DOK1 antibody, Ecto-ADP-ribosyltransferase 4 antibody, EC

Target Details

2.4.2.31 antibody, ADP-ribosyltransferase C2 and C3 toxin-like 4 antibody, ARTC4 antibody, Dombrock blood group carrier molecule antibody, Mono(ADP-ribosyl)transferase 4 antibody, NAD(P)(+)-arginine ADP-ribosyltransferase 4 antibody, CD antigen CD297 antibody

UniProt: [Q93070](#)

Application Details

Application Notes: IHC:1:50-300, ELISA:1:10000-20000,

Restrictions: For Research Use only

Handling

Format: Liquid

Buffer: PBS, pH 7.4, containing 0.02 % sodium azide as Preservative and 50 % Glycerol.

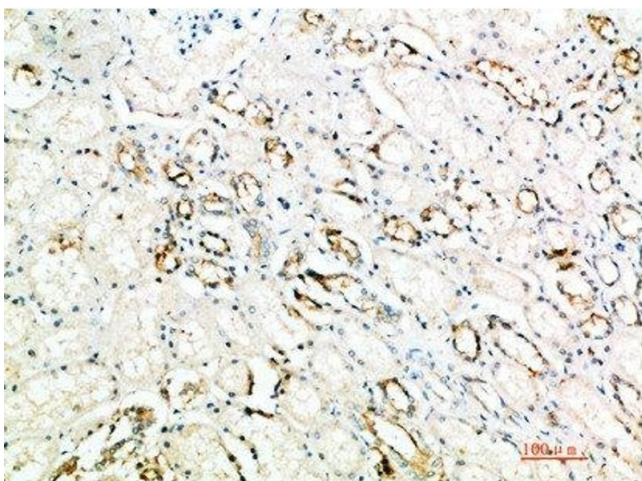
Preservative: Sodium azide

Precaution of Use: This product contains Sodium azide: a POISONOUS AND HAZARDOUS SUBSTANCE which should be handled by trained staff only.

Storage: -20 °C,-80 °C

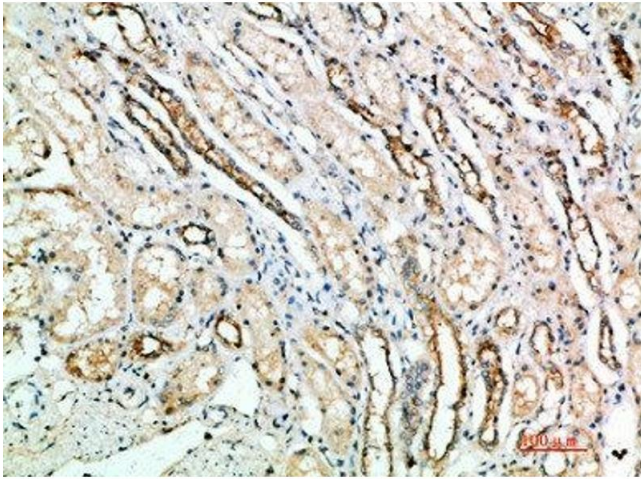
Storage Comment: Upon receipt, store at -20°C or -80°C. Avoid repeated freeze.

Images



Immunohistochemistry

Image 1. Immunohistochemical analysis of paraffin-embedded human-kidney, antibody was diluted at 1:200



Immunohistochemistry

Image 2. Immunohistochemical analysis of paraffin-embedded human-kidney, antibody was diluted at 1:200