

Datasheet for ABIN718946  
**anti-PPT1 antibody (AA 188-290)**

## 2 Images

[Go to Product page](#)

## Overview

Quantity:	100 µL
Target:	PPT1
Binding Specificity:	AA 188-290
Reactivity:	Human, Mouse, Rat
Host:	Rabbit
Clonality:	Polyclonal
Conjugate:	This PPT1 antibody is un-conjugated
Application:	Western Blotting (WB), ELISA, Immunohistochemistry (Paraffin-embedded Sections) (IHC (p)), Immunofluorescence (Cultured Cells) (IF (cc)), Immunofluorescence (Paraffin-embedded Sections) (IF (p)), Immunohistochemistry (Frozen Sections) (IHC (fro))

## Product Details

Immunogen:	KLH conjugated synthetic peptide derived from human PPT1
Isotype:	IgG
Cross-Reactivity:	Human, Mouse, Rat
Predicted Reactivity:	Dog,Cow,Sheep,Pig,Horse,Chicken,Rabbit
Purification:	Purified by Protein A.

## Target Details

Target:	PPT1
---------	------

## Target Details

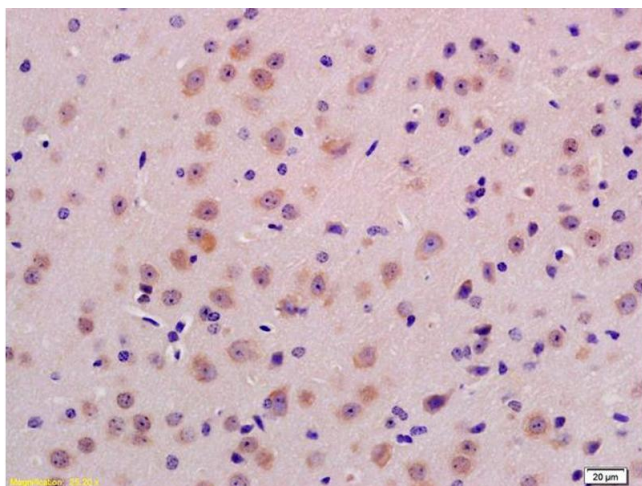
Alternative Name:	PPT1 ( <a href="#">PPT1 Products</a> )
Background:	<p>Synonyms: PPT, CLN1, INCL, Palmitoyl-protein thioesterase 1, PPT-1, Palmitoyl-protein hydrolase 1, PPT1</p> <p>Background: Removes thioester-linked fatty acyl groups such as palmitate from modified cysteine residues in proteins or peptides during lysosomal degradation. Prefers acyl chain lengths of 14 to 18 carbons.</p>
Gene ID:	5538
UniProt:	<a href="#">P50897</a>
Pathways:	<a href="#">SARS-CoV-2 Protein Interactome</a>

## Application Details

Application Notes:	<p>WB 1:300-5000</p> <p>ELISA 1:500-1000</p> <p>IHC-P 1:200-400</p> <p>IHC-F 1:100-500</p> <p>IF(IHC-P) 1:50-200</p> <p>IF(IHC-F) 1:50-200</p> <p>IF(ICC) 1:50-200</p>
Restrictions:	For Research Use only

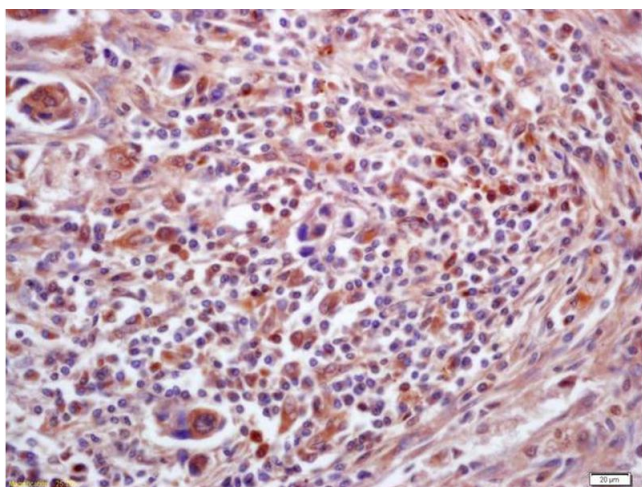
## Handling

Format:	Liquid
Concentration:	1 µg/µL
Buffer:	0.01M TBS( pH 7.4) with 1 % BSA, 0.02 % Proclin300 and 50 % Glycerol.
Preservative:	ProClin
Precaution of Use:	This product contains ProClin: a POISONOUS AND HAZARDOUS SUBSTANCE, which should be handled by trained staff only.
Storage:	4 °C, -20 °C
Storage Comment:	Shipped at 4°C. Store at -20°C for one year. Avoid repeated freeze/thaw cycles.
Expiry Date:	12 months



#### Immunohistochemistry

**Image 1.** Formalin-fixed and paraffin embedded mouse brain labeled with Anti-PPT1 Polyclonal Antibody, Unconjugated (ABIN718946) at 1:200 followed by conjugation to the secondary antibody and DAB staining



#### Immunohistochemistry

**Image 2.** Formalin-fixed and paraffin embedded human lung carcinoma labeled with Anti-PPT1 Polyclonal Antibody, Unconjugated (ABIN718946) at 1:200 followed by conjugation to the secondary antibody and DAB staining