



[Go to Product page](#)

Datasheet for ABIN7189462
anti-GZMM antibody (AA 207-256)

3 Images

Overview

Quantity:	100 µg
Target:	GZMM
Binding Specificity:	AA 207-256
Reactivity:	Human
Host:	Rabbit
Clonality:	Polyclonal
Conjugate:	This GZMM antibody is un-conjugated
Application:	Immunohistochemistry (IHC), ELISA

Product Details

Immunogen:	Synthetic peptide from Human protein at AA range: 207-256
Isotype:	IgG
Cross-Reactivity:	Human
Purification:	The antibody was affinity-purified from rabbit serum by affinity-chromatography using specific immunogen.

Target Details

Target:	GZMM
Alternative Name:	GZMM (GZMM Products)
Background:	GRAM_HUMAN antibody, Granzyme M (lymphocyte met ase 1) antibody, Granzyme M antibody,

Target Details

GranzymeM antibody, GZM M antibody, Gzmm antibody, HU Met 1 antibody, HU-Met-1 antibody, LMET 1 antibody, LMET1 antibody, Lymphocyte met ase 1 antibody, MET 1 antibody, Met 1 serine protease antibody, Met ase antibody, Met-1 serine protease antibody, Met-ase antibody, MET1 antibody, Met1 serine protease antibody, Natural killer cell granular protease antibody

UniProt: [P51124](#)

Application Details

Application Notes: IHC:1:50-300, ELISA:1:10000-20000,

Restrictions: For Research Use only

Handling

Format: Liquid

Buffer: PBS, pH 7.4, containing 0.02 % sodium azide as Preservative and 50 % Glycerol.

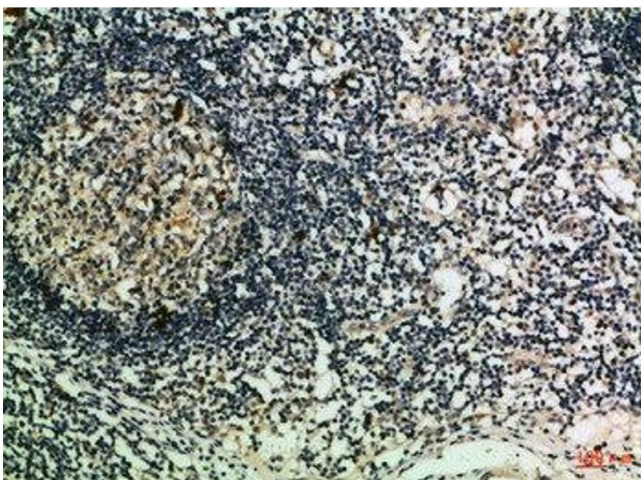
Preservative: Sodium azide

Precaution of Use: This product contains Sodium azide: a POISONOUS AND HAZARDOUS SUBSTANCE which should be handled by trained staff only.

Storage: -20 °C,-80 °C

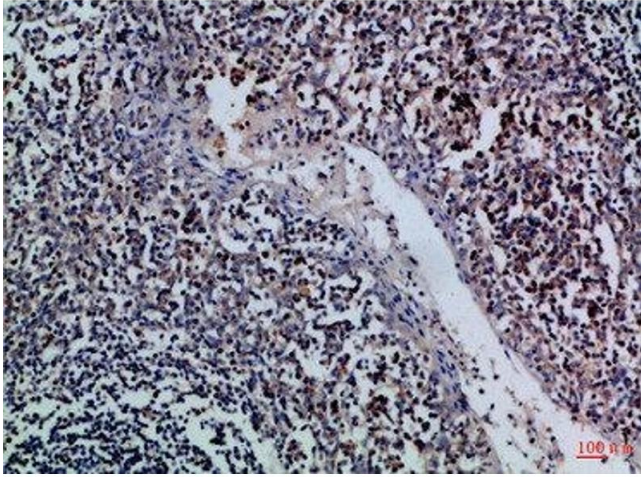
Storage Comment: Upon receipt, store at -20°C or -80°C. Avoid repeated freeze.

Images



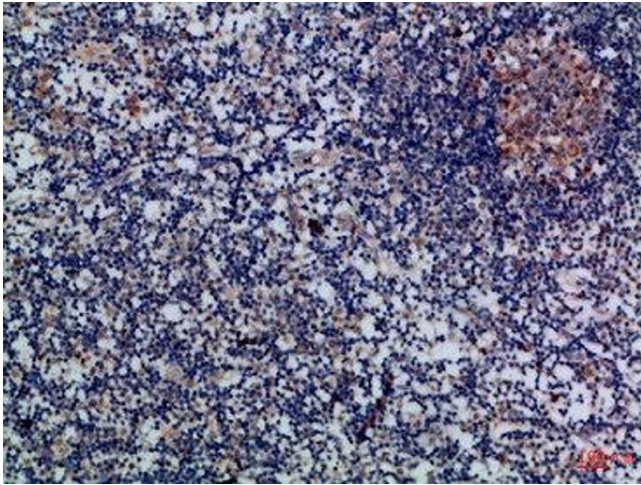
Immunohistochemistry

Image 1. Immunohistochemical analysis of paraffin-embedded Human-lymph, antibody was diluted at 1:100



Immunohistochemistry

Image 2. Immunohistochemical analysis of paraffin-embedded Human-tonsil, antibody was diluted at 1:100



Immunohistochemistry

Image 3. Immunohistochemical analysis of paraffin-embedded Human-lymph, antibody was diluted at 1:100