



[Go to Product page](#)

Datasheet for ABIN7189463  
**anti-BMPR1B antibody (AA 21-70)**

2 Images

Overview

Quantity:	100 µg
Target:	BMPR1B
Binding Specificity:	AA 21-70
Reactivity:	Human
Host:	Rabbit
Clonality:	Polyclonal
Conjugate:	This BMPR1B antibody is un-conjugated
Application:	ELISA, Immunohistochemistry (IHC)

Product Details

Immunogen:	Synthetic peptide from Human protein at AA range: 21-70
Isotype:	IgG
Cross-Reactivity:	Human, Mouse
Purification:	The antibody was affinity-purified from rabbit serum by affinity-chromatography using specific immunogen.

Target Details

Target:	BMPR1B
Alternative Name:	BMPR1B ( <a href="#">BMPR1B Products</a> )
Background:	Activin receptor like kinase 6 antibody, Acvrlk6 antibody, ALK 6 antibody, ALK6 antibody, alk6tr

## Target Details

antibody, BMP type-1B receptor antibody, BMPRI antibody, BMPRI-1B antibody, Bmpr1b antibody, BMPRI antibody, BMR1B\_HUMAN antibody, Bone morphogenetic protein receptor type 1B antibody, Bone morphogenetic protein receptor type IB antibody, Bone morphogenetic protein receptor type-1B antibody, BR 1b antibody, BR1b antibody, CDw 293 antibody, CDw293 antibody, CDw293 antigen antibody, CFK 43a antibody, CFK43a antibody, Serine/threonine receptor kinase antibody, zALK 6 antibody, zALK6 antibody

UniProt: [O00238](#)

## Application Details

Application Notes: IHC:1:50-300, ELISA:1:10000-20000,

Restrictions: For Research Use only

## Handling

Format: Liquid

Buffer: PBS, pH 7.4, containing 0.02 % sodium azide as Preservative and 50 % Glycerol.

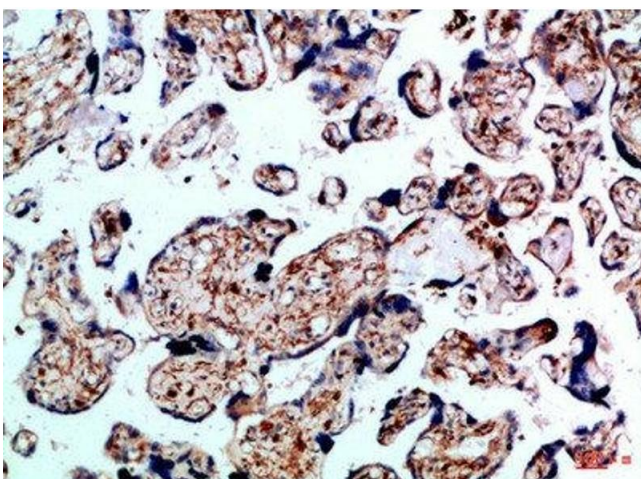
Preservative: Sodium azide

Precaution of Use: This product contains Sodium azide: a POISONOUS AND HAZARDOUS SUBSTANCE which should be handled by trained staff only.

Storage: -20 °C,-80 °C

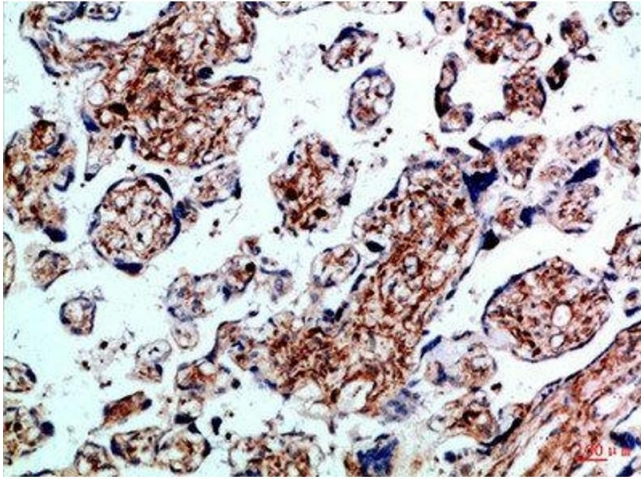
Storage Comment: Upon receipt, store at -20°C or -80°C. Avoid repeated freeze.

## Images



### Immunohistochemistry

**Image 1.** Immunohistochemical analysis of paraffin-embedded Human-placenta, antibody was diluted at 1:100



### Immunohistochemistry

**Image 2.** Immunohistochemical analysis of paraffin-embedded Human-placenta, antibody was diluted at 1:100