

Datasheet for ABIN7189465
anti-MBL2 antibody (AA 21-70)[Go to Product page](#)

5 Images

Overview

Quantity:	100 µg
Target:	MBL2
Binding Specificity:	AA 21-70
Reactivity:	Human
Host:	Rabbit
Clonality:	Polyclonal
Conjugate:	This MBL2 antibody is un-conjugated
Application:	Western Blotting (WB), ELISA

Product Details

Immunogen:	Synthetic peptide from Human protein at AA range: 21-70
Isotype:	IgG
Cross-Reactivity:	Human, Mouse
Purification:	The antibody was affinity-purified from rabbit serum by affinity-chromatography using specific immunogen.

Target Details

Target:	MBL2
Alternative Name:	MBL2 (MBL2 Products)
Background:	COLEC 1 antibody, COLEC1 antibody, Collectin-1 antibody, HSMBPC antibody, Lectin, mannose-

Target Details

binding, soluble, 2 antibody, Mannan binding lectin antibody, Mannan binding protein antibody, Mannan-binding protein antibody, Mannose binding lectin (protein C) 2 soluble antibody, Mannose binding lectin (protein C) 2, soluble (opsonic defect) antibody, Mannose binding lectin (protein C) 2, soluble antibody, Mannose binding lectin 2 soluble antibody, Mannose binding lectin 2, soluble (opsonic defect) antibody, Mannose binding lectin antibody, Mannose binding lectin protein C2 soluble opsonic defect antibody, Mannose binding protein antibody, Mannose binding protein C antibody, Mannose binding protein C precursor antibody, Mannose binding protein, serum antibody, Mannose-binding lectin antibody, Mannose-binding protein C antibody, MBL 2 antibody, MBL antibody, MBL2 antibody, MBL2_HUMAN antibody, MBL2D antibody, MBP 1 antibody, MBP antibody, MBP C antibody, MBP-C antibody, MBP1 antibody, MBPB antibody, MBPC antibody, MBPD antibody, MGC116832 antibody, MGC116833 antibody, Opsonic defect antibody, protein C antibody, Soluble mannose binding lectin antibody

UniProt: [P11226](#)

Pathways: [Complement System](#), [Positive Regulation of Immune Effector Process](#)

Application Details

Application Notes: WB:1:500-10000, ELISA:1:10000,

Restrictions: For Research Use only

Handling

Format: Liquid

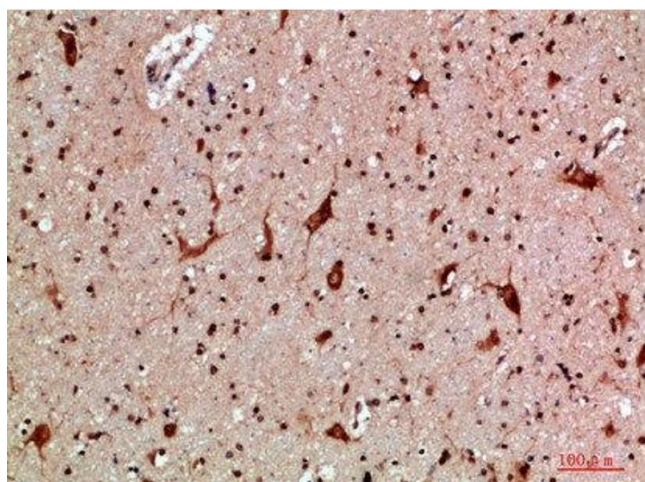
Buffer: PBS, pH 7.4, containing 0.02 % sodium azide as Preservative and 50 % Glycerol.

Preservative: Sodium azide

Precaution of Use: This product contains Sodium azide: a POISONOUS AND HAZARDOUS SUBSTANCE which should be handled by trained staff only.

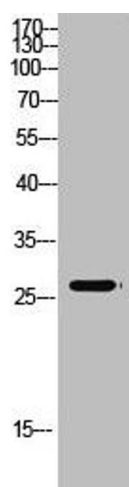
Storage: -20 °C, -80 °C

Storage Comment: Upon receipt, store at -20°C or -80°C. Avoid repeated freeze.



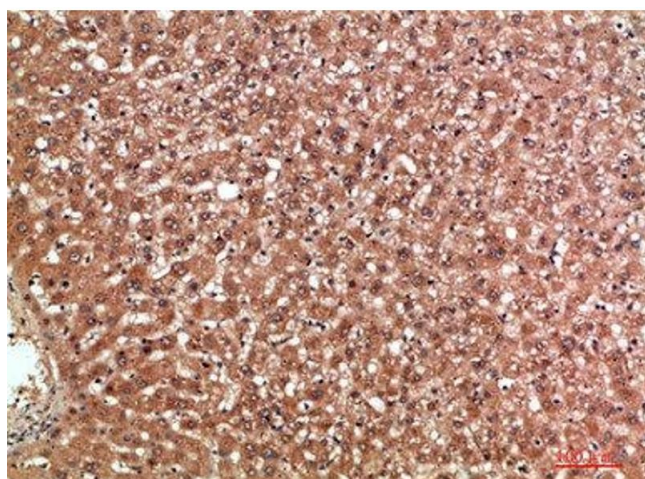
Immunohistochemistry

Image 1. Immunohistochemical analysis of paraffin-embedded human-brain, antibody was diluted at 1:200



Western Blotting

Image 2. Western Blot analysis of mouse-kidney cells using Antibody diluted at 500. Secondary antibody was diluted at 1:20000



Immunohistochemistry

Image 3. Immunohistochemical analysis of paraffin-embedded human-liver, antibody was diluted at 1:200

Please check the [product details page](#) for more images. Overall 5 images are available for ABIN7189465.