

Datasheet for ABIN7189470
anti-ASIC1 antibody (AA 220-280)



[Go to Product page](#)

2 Images

Overview

Quantity:	100 µg
Target:	ASIC1 (ACCN2)
Binding Specificity:	AA 220-280
Reactivity:	Human
Host:	Rabbit
Clonality:	Polyclonal
Conjugate:	This ASIC1 antibody is un-conjugated
Application:	Western Blotting (WB), Immunohistochemistry (IHC), ELISA

Product Details

Immunogen:	Synthetic peptide from Human protein at AA range: 220-280
Isotype:	IgG
Cross-Reactivity:	Human, Mouse, Rat
Purification:	The antibody was affinity-purified from rabbit serum by affinity-chromatography using specific immunogen.

Target Details

Target:	ASIC1 (ACCN2)
Alternative Name:	ASIC1 (ACCN2 Products)
Background:	ACCN2 antibody, ACCN2_HUMAN antibody, Acid sensing ion channel 1 antibody, Acid sensing

Target Details

ion channel 1a protein antibody, Acid sensing ion channel antibody, Acid-sensing ion channel 1 antibody, AI843610 antibody, Amiloride sensitive cation channel 2 neuronal antibody, Amiloride-sensitive cation channel 2 antibody, ASIC antibody, ASIC1 antibody, ASIC1A antibody, B530003N02Rik antibody, BNaC2 antibody, Brain sodium channel 2 antibody, Cation channel amiloride sensitive neuronal 2 antibody, hBNaC2 antibody, neuronal antibody

UniProt: [P78348](#)

Application Details

Application Notes: WB:1:500-2000, IHC:1:50-300, ELISA:1:10000-20000,

Restrictions: For Research Use only

Handling

Format: Liquid

Buffer: PBS, pH 7.4, containing 0.02 % sodium azide as Preservative and 50 % Glycerol.

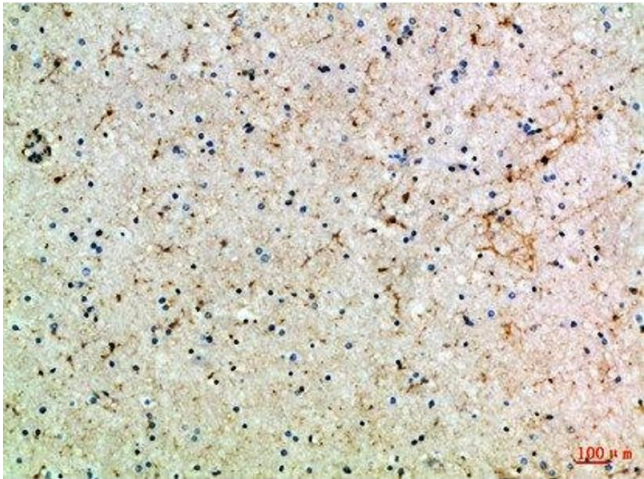
Preservative: Sodium azide

Precaution of Use: This product contains Sodium azide: a POISONOUS AND HAZARDOUS SUBSTANCE which should be handled by trained staff only.

Storage: -20 °C,-80 °C

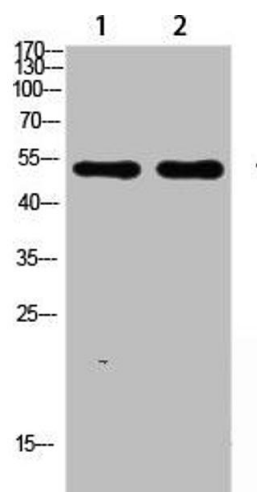
Storage Comment: Upon receipt, store at -20°C or -80°C. Avoid repeated freeze.

Images



Immunohistochemistry

Image 1. Immunohistochemical analysis of paraffin-embedded Human-brain, antibody was diluted at 1:100



Western Blotting

Image 2. Western blot analysis of SW480 lysate, antibody was diluted at 1000. Secondary antibody was diluted at 1:20000