



Datasheet for ABIN7189471  
**anti-KIR3DL2 antibody (AA 221-270)**



[Go to Product page](#)

3 Images

Overview

Quantity:	100 µg
Target:	KIR3DL2
Binding Specificity:	AA 221-270
Reactivity:	Human
Host:	Rabbit
Clonality:	Polyclonal
Conjugate:	This KIR3DL2 antibody is un-conjugated
Application:	Immunohistochemistry (IHC), ELISA

Product Details

Immunogen:	Synthetic peptide from Human protein at AA range: 221-270
Isotype:	IgG
Cross-Reactivity:	Human
Purification:	The antibody was affinity-purified from rabbit serum by affinity-chromatography using specific immunogen.

Target Details

Target:	KIR3DL2
Alternative Name:	KIR3DL2 ( <a href="#">KIR3DL2 Products</a> )
Background:	KIR3DL2 antibody, CD158K antibody, NKAT4Killer cell immunoglobulin-like receptor 3DL2

## Target Details

antibody, CD158 antigen-like family member K antibody, MHC class I NK cell receptor antibody, Natural killer-associated transcript 4 antibody, NKAT-4 antibody, p70 natural killer cell receptor clone CL-5 antibody, p70 NK receptor CL-5 antibody, CD antigen CD158k antibody

UniProt: [P43630](#)

## Application Details

Application Notes: IHC:1:50-300, ELISA:1:10000-20000,

Restrictions: For Research Use only

## Handling

Format: Liquid

Buffer: PBS, pH 7.4, containing 0.02 % sodium azide as Preservative and 50 % Glycerol.

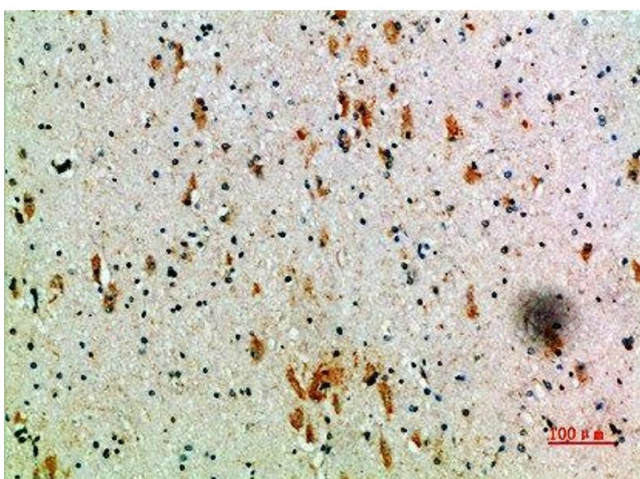
Preservative: Sodium azide

Precaution of Use: This product contains Sodium azide: a POISONOUS AND HAZARDOUS SUBSTANCE which should be handled by trained staff only.

Storage: -20 °C,-80 °C

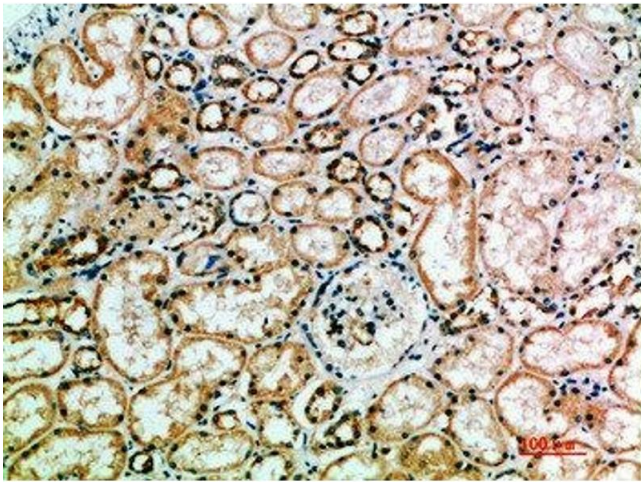
Storage Comment: Upon receipt, store at -20°C or -80°C. Avoid repeated freeze.

## Images



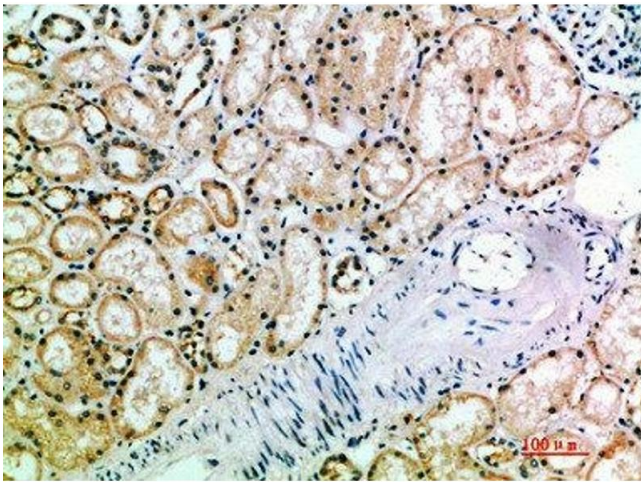
### Immunohistochemistry

**Image 1.** Immunohistochemical analysis of paraffin-embedded human-brain, antibody was diluted at 1:200



### Immunohistochemistry

**Image 2.** Immunohistochemical analysis of paraffin-embedded human-kidney, antibody was diluted at 1:200



### Immunohistochemistry

**Image 3.** Immunohistochemical analysis of paraffin-embedded human-kidney, antibody was diluted at 1:200