



[Go to Product page](#)

Datasheet for ABIN7189474
anti-LAMP3 antibody (AA 261-310)

3 Images

Overview

Quantity:	100 µg
Target:	LAMP3
Binding Specificity:	AA 261-310
Reactivity:	Human
Host:	Rabbit
Clonality:	Polyclonal
Conjugate:	This LAMP3 antibody is un-conjugated
Application:	Western Blotting (WB), Immunohistochemistry (IHC), ELISA

Product Details

Immunogen:	Synthetic peptide from Human protein at AA range: 261-310
Isotype:	IgG
Cross-Reactivity:	Human
Purification:	The antibody was affinity-purified from rabbit serum by affinity-chromatography using specific immunogen.

Target Details

Target:	LAMP3
Alternative Name:	LAMP3 (LAMP3 Products)
Background:	CD208 antibody, CD208 antigen antibody, DC LAMP antibody, DC lysosome associated

Target Details

membrane glycoprotein antibody, DC-lysosome-associated membrane glycoprotein antibody, DCLAMP antibody, LAMP antibody, LAMP 3 antibody, LAMP-3 antibody, Lamp3 antibody, LAMP3_HUMAN antibody, Lysosomal associated membrane protein 3 antibody, Lysosomal-associated membrane protein 3 antibody, Lysosome-associated membrane glycoprotein 3 antibody, Protein TSC403 antibody, TSC403 antibody

UniProt: [Q9UQV4](#)

Application Details

Application Notes: WB:1:500-1:2000, IHC:1:100-1:300, ELISA:1:20000,

Restrictions: For Research Use only

Handling

Format: Liquid

Buffer: PBS, pH 7.4, containing 0.02 % sodium azide as Preservative and 50 % Glycerol.

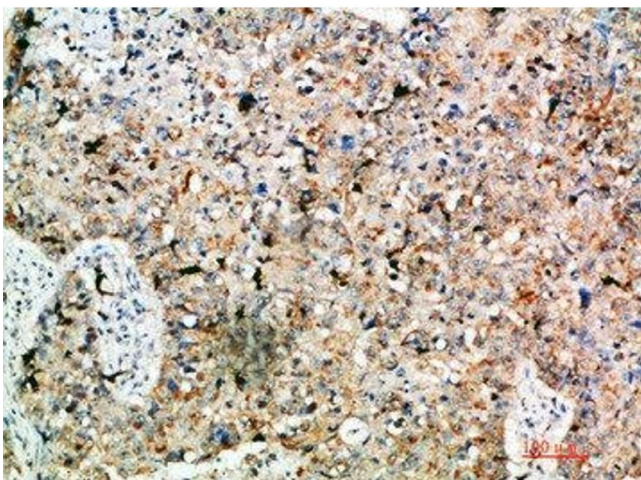
Preservative: Sodium azide

Precaution of Use: This product contains Sodium azide: a POISONOUS AND HAZARDOUS SUBSTANCE which should be handled by trained staff only.

Storage: -20 °C,-80 °C

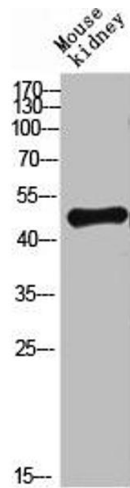
Storage Comment: Upon receipt, store at -20°C or -80°C. Avoid repeated freeze.

Images



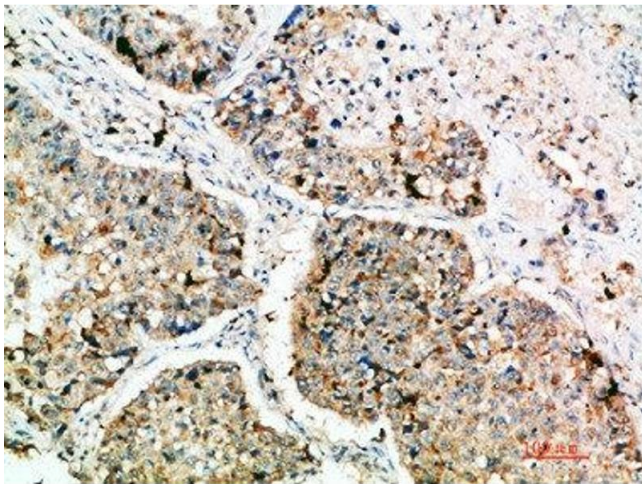
Immunohistochemistry

Image 1. Immunohistochemical analysis of paraffin-embedded human-lung-cancer, antibody was diluted at 1:200



Western Blotting

Image 2. Western blot analysis of mouse-lung mouse-heart 293T Hela 3T3 lysate, antibody was diluted at 500. Secondary antibody was diluted at 1:20000



Immunohistochemistry

Image 3. Immunohistochemical analysis of paraffin-embedded human-lung-cancer, antibody was diluted at 1:200