

Datasheet for ABIN7189476

anti-C-Type Lectin Domain Family 4, Member M (CLEC4M) (AA 271-320) antibody[Go to Product page](#)**2** Images

Overview

Quantity:	100 µg
Target:	C-Type Lectin Domain Family 4, Member M (CLEC4M)
Binding Specificity:	AA 271-320
Reactivity:	Human
Host:	Rabbit
Clonality:	Polyclonal
Conjugate:	Un-conjugated
Application:	Western Blotting (WB), ELISA, Immunohistochemistry (IHC)

Product Details

Immunogen:	Synthetic peptide from Human protein at AA range: 271-320
Isotype:	IgG
Cross-Reactivity:	Human, Mouse, Rat
Purification:	The antibody was affinity-purified from rabbit serum by affinity-chromatography using specific immunogen.

Target Details

Target:	C-Type Lectin Domain Family 4, Member M (CLEC4M)
Alternative Name:	CLEC4M (CLEC4M Products)
Background:	C type lectin domain family 4, member M antibody, C-type lectin domain family 4 member M

Target Details

antibody, CD209 antigen like antibody, CD209 antigen like protein 1 antibody, CD209 antigen-like protein 1 antibody, CD209L antibody, CD209L1 antibody, CD299 antibody, CD299 antigen antibody, CLC4M_HUMAN antibody, CLEC4M antibody, DC SIGN related protein antibody, DC SIGN2 antibody, DC SIGNR antibody, DC-SIGN-related protein antibody, DC-SIGN2 antibody, DC-SIGNR antibody, DCSIGN related protein antibody, DCSIGNR antibody, Dendritic cell-specific ICAM-3-grabbing non-integrin 2 antibody, HP10347 antibody, L SIGN antibody, L-SIGN antibody, Liver/lymph node specific ICAM3 grabbing nonintegrin antibody, Liver/lymph node-specific ICAM-3-grabbing non-integrin antibody, LSIGN antibody, Mannose binding C type lectin DC SIGNR antibody, MGC129964 antibody, MGC47866 antibody

UniProt: [Q9H2X3](#)

Application Details

Application Notes: WB:1:500-1:2000, IHC:1:100-1:300, ELISA:1:20000,

Restrictions: For Research Use only

Handling

Format: Liquid

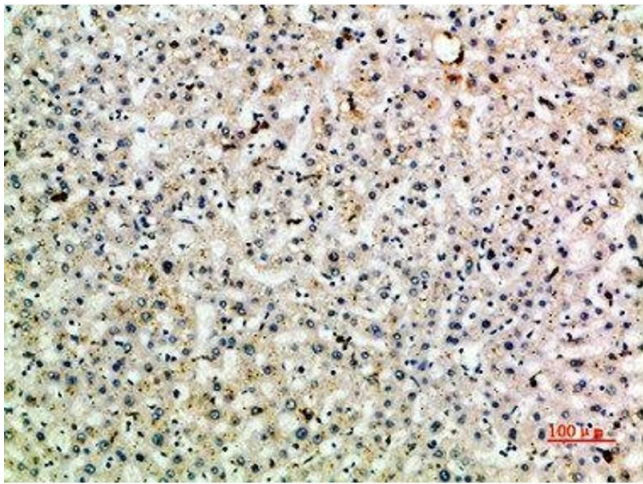
Buffer: PBS, pH 7.4, containing 0.02 % sodium azide as Preservative and 50 % Glycerol.

Preservative: Sodium azide

Precaution of Use: This product contains Sodium azide: a POISONOUS AND HAZARDOUS SUBSTANCE which should be handled by trained staff only.

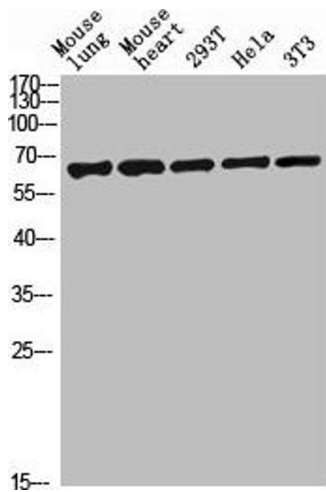
Storage: -20 °C, -80 °C

Storage Comment: Upon receipt, store at -20°C or -80°C. Avoid repeated freeze.



Immunohistochemistry

Image 1. Immunohistochemical analysis of paraffin-embedded human-liver, antibody was diluted at 1:200



Western Blotting

Image 2. Western blot analysis of mouse-lung mouse-lung lysate, antibody was diluted at 2000. Secondary antibody was diluted at 1:20000