

Datasheet for ABIN7189480
anti-CD24 antibody (AA 30-60)[Go to Product page](#)

2 Images

Overview

Quantity:	100 µg
Target:	CD24
Binding Specificity:	AA 30-60
Reactivity:	Human
Host:	Rabbit
Clonality:	Polyclonal
Conjugate:	This CD24 antibody is un-conjugated
Application:	Immunohistochemistry (IHC), ELISA

Product Details

Immunogen:	Synthetic peptide from Human protein at AA range: 30-60
Isotype:	IgG
Cross-Reactivity:	Human
Purification:	The antibody was affinity-purified from rabbit serum by affinity-chromatography using specific immunogen.

Target Details

Target:	CD24
Alternative Name:	CD24 (CD24 Products)
Background:	CD 24 antibody, CD24 antibody, CD24 antigen (small cell lung carcinoma cluster 4 antigen)

Target Details

antibody, CD24 antigen antibody, CD24 Molecule antibody, CD24_HUMAN antibody, CD24A antibody, FLJ22950 antibody, FLJ43543 antibody, GPI linked surface mucin antibody, Heat stable antigen antibody, HSA antibody, MGC75043 antibody, Nectadrin antibody, Signal transducer CD24 antibody, Small cell lung carcinoma cluster 4 antigen antibody

UniProt: [P25063](#)

Pathways: [Regulation of Leukocyte Mediated Immunity](#), [Positive Regulation of Immune Effector Process](#), [Activated T Cell Proliferation](#)

Application Details

Application Notes: IHC:1:50-300, ELISA:1:10000-20000,

Restrictions: For Research Use only

Handling

Format: Liquid

Buffer: PBS, pH 7.4, containing 0.02 % sodium azide as Preservative and 50 % Glycerol.

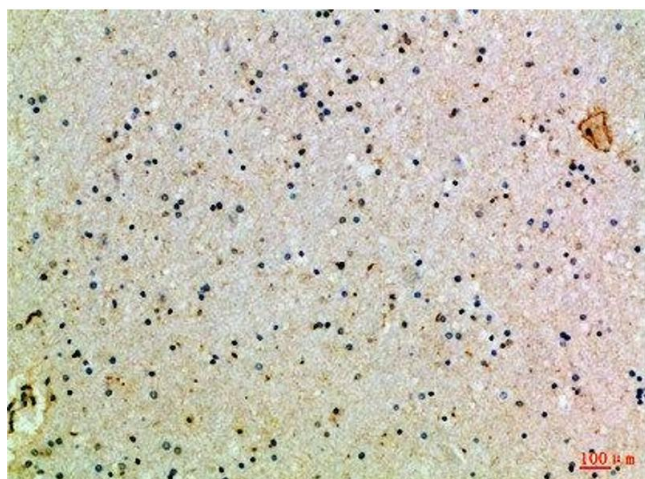
Preservative: Sodium azide

Precaution of Use: This product contains Sodium azide: a POISONOUS AND HAZARDOUS SUBSTANCE which should be handled by trained staff only.

Storage: -20 °C,-80 °C

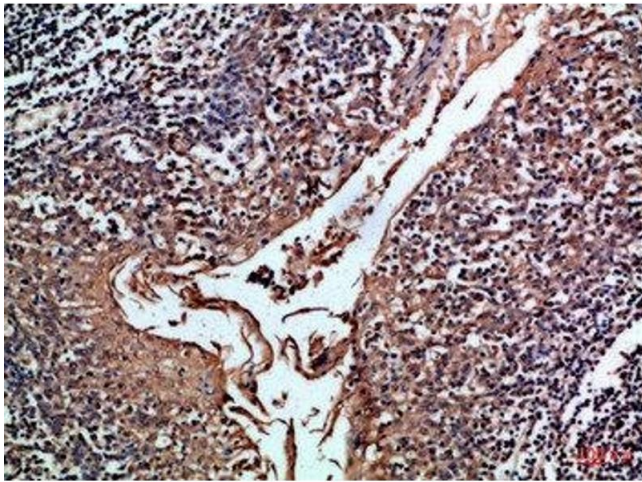
Storage Comment: Upon receipt, store at -20°C or -80°C. Avoid repeated freeze.

Images



Immunohistochemistry

Image 1. Immunohistochemical analysis of paraffin-embedded Human-brain, antibody was diluted at 1:100



Immunohistochemistry

Image 2. Immunohistochemical analysis of paraffin-embedded Human-tonsil, antibody was diluted at 1:100