

Datasheet for ABIN7189483
anti-RCC1 antibody (AA 301-350)[Go to Product page](#)

3 Images

Overview

Quantity:	100 µg
Target:	RCC1
Binding Specificity:	AA 301-350
Reactivity:	Human
Host:	Rabbit
Clonality:	Polyclonal
Conjugate:	This RCC1 antibody is un-conjugated
Application:	Western Blotting (WB), ELISA

Product Details

Immunogen:	Synthetic peptide from Human protein at AA range: 301-350
Isotype:	IgG
Cross-Reactivity:	Human, Mouse, Rat
Purification:	The antibody was affinity-purified from rabbit serum by affinity-chromatography using specific immunogen.

Target Details

Target:	RCC1
Alternative Name:	RCC1 (RCC1 Products)
Background:	Cell cycle regulatory protein antibody, CHC 1 antibody, CHC1 antibody, Chromosome

Target Details

condensation 1 antibody, Chromosome condensation protein 1 antibody, Guanine nucleotide releasing protein antibody, HERC2 antibody, Ran GEF antibody, RanGEF antibody, RCC 1 antibody, RCC1 antibody, RCC1 I antibody, RCC1_HUMAN antibody, Regulator of chromosome condensation 1 antibody, Regulator of chromosome condensation antibody, SHEP1 antibody, SNHG3 RCC1 antibody, SNHG3 RCC1 readthrough transcript antibody

UniProt: [P18754](#)

Pathways: [Chromatin Binding](#), [Protein targeting to Nucleus](#)

Application Details

Application Notes: WB:1:500-10000, ELISA:1:10000,

Restrictions: For Research Use only

Handling

Format: Liquid

Buffer: PBS, pH 7.4, containing 0.02 % sodium azide as Preservative and 50 % Glycerol.

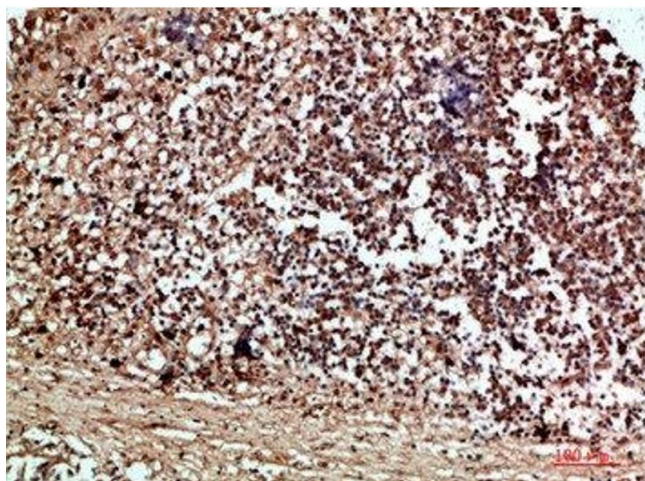
Preservative: Sodium azide

Precaution of Use: This product contains Sodium azide: a POISONOUS AND HAZARDOUS SUBSTANCE which should be handled by trained staff only.

Storage: -20 °C,-80 °C

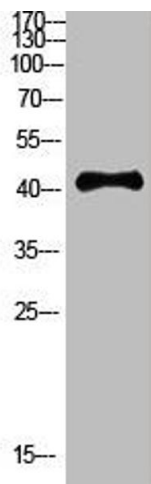
Storage Comment: Upon receipt, store at -20°C or -80°C. Avoid repeated freeze.

Images



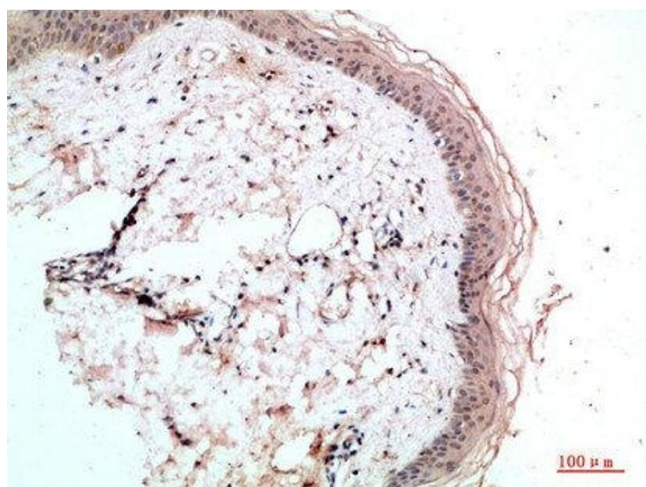
Immunohistochemistry

Image 1. Immunohistochemical analysis of paraffin-embedded human-thyroid, antibody was diluted at 1:200



Western Blotting

Image 2. Western Blot analysis of HEPG2 cells using Antibody diluted at 800. Secondary antibody was diluted at 1:20000



Immunohistochemistry

Image 3. Immunohistochemical analysis of paraffin-embedded human-skin, antibody was diluted at 1:200