



[Go to Product page](#)

Datasheet for ABIN7189484

## anti-CCL2 antibody (AA 31-80)

### 4 Images

#### Overview

Quantity:	100 µg
Target:	CCL2
Binding Specificity:	AA 31-80
Reactivity:	Human
Host:	Rabbit
Clonality:	Polyclonal
Conjugate:	This CCL2 antibody is un-conjugated
Application:	Immunohistochemistry (IHC), ELISA

#### Product Details

Immunogen:	Synthetic peptide from Human protein at AA range: 31-80
Isotype:	IgG
Cross-Reactivity:	Human, Mouse
Purification:	The antibody was affinity-purified from rabbit serum by affinity-chromatography using specific immunogen.

#### Target Details

Target:	CCL2
Alternative Name:	CCL2 ( <a href="#">CCL2 Products</a> )
Background:	Beta chemokine exodus 1 antibody, Beta-chemokine exodus-1 antibody, C C motif chemokine

## Target Details

---

ligand 20 antibody, C-C motif chemokine 20 antibody, CC chemokine LARC antibody, Ccl20 antibody, CCL20(2-70) antibody, CCL20\_HUMAN antibody, Chemokine (C C motif) ligand 20 antibody, Chemokine C-C motif chemokine 20 antibody, Chemokine CC motif ligand 20 antibody, CKb4 antibody, Exodus 1 antibody, Exodus antibody, LARC antibody, Liver and activation regulated chemokine antibody, Liver and activation-regulated chemokine antibody, Macrophage inflammatory protein 3 alpha antibody, MIP 3 alpha antibody, MIP 3A antibody, MIP-3-alpha antibody, MIP-3a antibody, MIP3 alpha antibody, MIP3A antibody, SCYA20 antibody, Small inducible cytokine A20 antibody, Small inducible cytokine subfamily A (Cys Cys) member 20 antibody, Small-inducible cytokine A20 antibody, ST38 antibody

UniProt: [P78556](#)

Pathways: [Cellular Response to Molecule of Bacterial Origin](#), [Positive Regulation of Immune Effector Process](#), [ER-Nucleus Signaling](#), [Unfolded Protein Response](#), [The Global Phosphorylation Landscape of SARS-CoV-2 Infection](#)

## Application Details

---

Application Notes: IHC:1:50-300, ELISA:1:10000-20000,

Restrictions: For Research Use only

## Handling

---

Format: Liquid

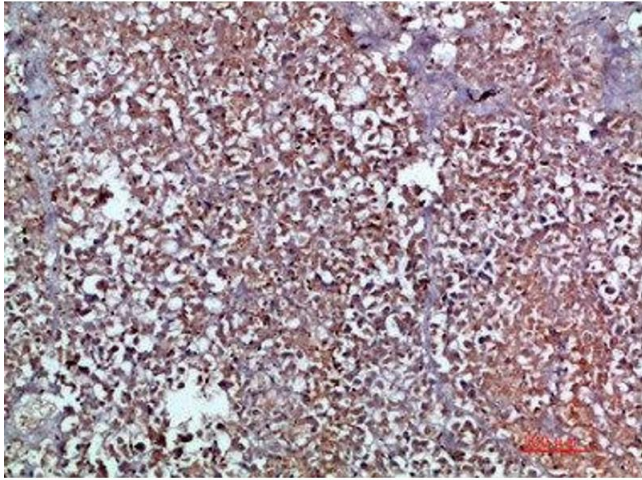
Buffer: PBS, pH 7.4, containing 0.02 % sodium azide as Preservative and 50 % Glycerol.

Preservative: Sodium azide

Precaution of Use: This product contains Sodium azide: a POISONOUS AND HAZARDOUS SUBSTANCE which should be handled by trained staff only.

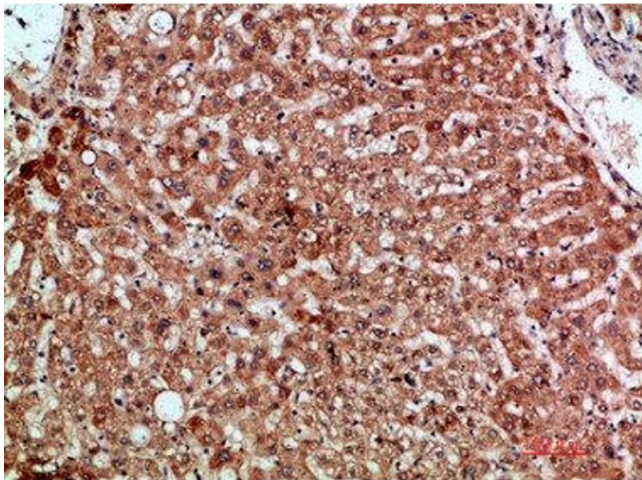
Storage: -20 °C,-80 °C

Storage Comment: Upon receipt, store at -20°C or -80°C. Avoid repeated freeze.



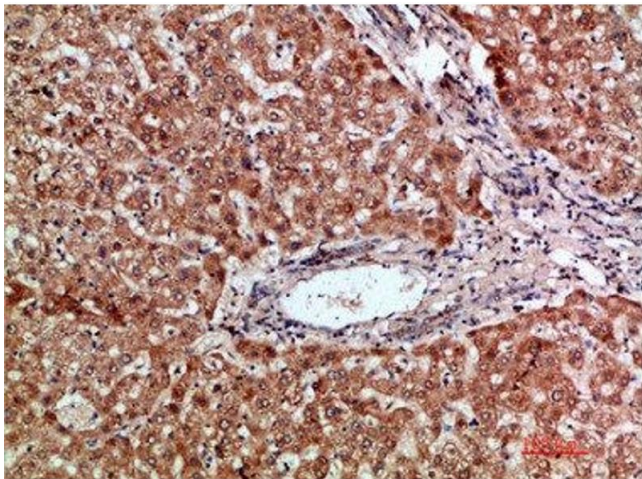
#### Immunohistochemistry

**Image 1.** Immunohistochemical analysis of paraffin-embedded human-pancreas, antibody was diluted at 1:200



#### Immunohistochemistry

**Image 2.** Immunohistochemical analysis of paraffin-embedded human-liver, antibody was diluted at 1:200



#### Immunohistochemistry

**Image 3.** Immunohistochemical analysis of paraffin-embedded human-liver, antibody was diluted at 1:200

Please check the [product details page](#) for more images. Overall 4 images are available for ABIN7189484.