

Datasheet for ABIN7189486
anti-CDNF antibody (AA 31-80)[Go to Product page](#)

2 Images

Overview

Quantity:	100 µg
Target:	CDNF
Binding Specificity:	AA 31-80
Reactivity:	Human
Host:	Rabbit
Clonality:	Polyclonal
Conjugate:	This CDNF antibody is un-conjugated
Application:	Immunohistochemistry (IHC), ELISA

Product Details

Immunogen:	Synthetic peptide from Human protein at AA range: 31-80
Isotype:	IgG
Cross-Reactivity:	Human
Purification:	The antibody was affinity-purified from rabbit serum by affinity-chromatography using specific immunogen.

Target Details

Target:	CDNF
Alternative Name:	CDNF (CDNF Products)
Background:	Arginine rich mutated in early stage tumors like 1 antibody, ARMET L1 antibody, ARMET like

Target Details

protein 1 antibody, ARMET-like protein 1 antibody, ARMETL 1 antibody, ARMETL1 antibody, CDNF antibody, CDNF_HUMAN antibody, Cerebral dopamine neurotrophic factor antibody, Conserved dopamine neurotrophic factor antibody

UniProt: [Q49AH0](#)

Application Details

Application Notes: IHC:1:50-300, ELISA:1:10000-20000,

Restrictions: For Research Use only

Handling

Format: Liquid

Buffer: PBS, pH 7.4, containing 0.02 % sodium azide as Preservative and 50 % Glycerol.

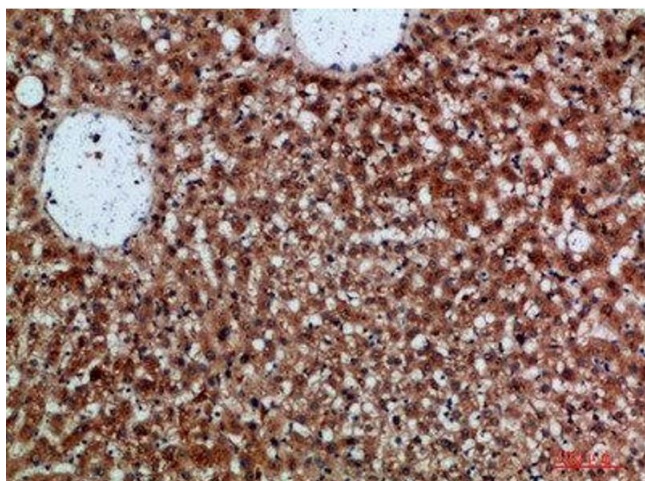
Preservative: Sodium azide

Precaution of Use: This product contains Sodium azide: a POISONOUS AND HAZARDOUS SUBSTANCE which should be handled by trained staff only.

Storage: -20 °C,-80 °C

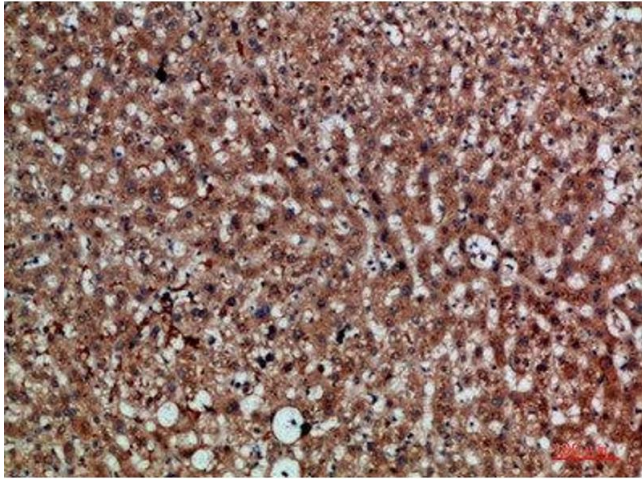
Storage Comment: Upon receipt, store at -20°C or -80°C. Avoid repeated freeze.

Images



Immunohistochemistry

Image 1. Immunohistochemical analysis of paraffin-embedded human-liver, antibody was diluted at 1:200



Immunohistochemistry

Image 2. Immunohistochemical analysis of paraffin-embedded human-liver, antibody was diluted at 1:200