



Datasheet for ABIN7189488
anti-DDR2 antibody (AA 31-80)



[Go to Product page](#)

2 Images

Overview

Quantity:	100 µg
Target:	DDR2
Binding Specificity:	AA 31-80
Reactivity:	Human
Host:	Rabbit
Clonality:	Polyclonal
Conjugate:	This DDR2 antibody is un-conjugated
Application:	ELISA, Immunohistochemistry (IHC)

Product Details

Immunogen:	Synthetic peptide from Human protein at AA range: 31-80
Isotype:	IgG
Cross-Reactivity:	Human, Mouse
Purification:	The antibody was affinity-purified from rabbit serum by affinity-chromatography using specific immunogen.

Target Details

Target:	DDR2
Alternative Name:	DDR2 (DDR2 Products)
Background:	CD167 antigen-like family member B antibody, CD167b antibody, CD167b antigen antibody, Cell

Target Details

migration inducing protein 20 antibody, DDR 2 antibody, DDR2 antibody, DDR2_HUMAN antibody, Discoidin domain containing receptor 2 antibody, Discoidin domain receptor 2 antibody, Discoidin domain receptor family member 2 antibody, discoidin domain receptor tyrosine kinase 2 antibody, Discoidin domain-containing receptor 2 antibody, discoidin domain-containing receptor tyrosine kinase 2 antibody, Hydroxyaryl protein kinase antibody, MIG20a antibody, Migration inducing gene 16 protein antibody, Neurotrophic tyrosine kinase antibody, Neurotrophic tyrosine kinase receptor related 3 antibody, NTRKR 3 antibody, NTRKR3 antibody, Receptor protein tyrosine kinase TKT antibody, Receptor protein-tyrosine kinase TKT antibody, Receptor related 3 antibody, receptor-related 3 antibody, TKT antibody, TYRO 10 antibody, TYRO10 antibody, Tyrosine kinase receptor related to neurotrophic TRK antibody, Tyrosine protein kinase TYRO 10 antibody, Tyrosine protein kinase TYRO10 antibody, Tyrosine-protein kinase TYRO10 antibody, Tyrosylprotein kinase antibody

UniProt: [Q16832](#)

Pathways: [RTK Signaling](#)

Application Details

Application Notes: IHC:1:50-300, ELISA:1:10000-20000,

Restrictions: For Research Use only

Handling

Format: Liquid

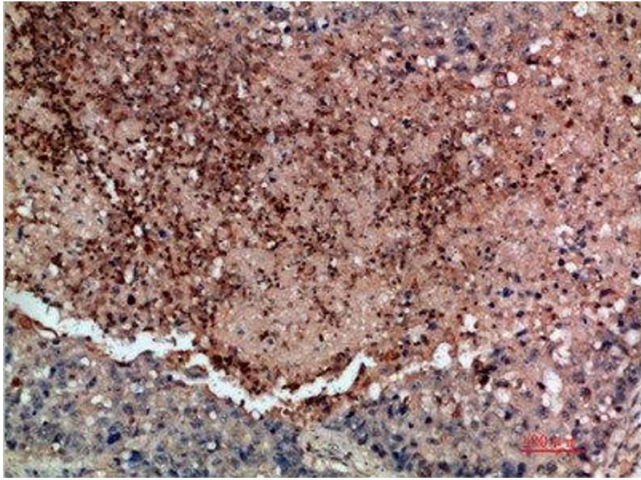
Buffer: PBS, pH 7.4, containing 0.02 % sodium azide as Preservative and 50 % Glycerol.

Preservative: Sodium azide

Precaution of Use: This product contains Sodium azide: a POISONOUS AND HAZARDOUS SUBSTANCE which should be handled by trained staff only.

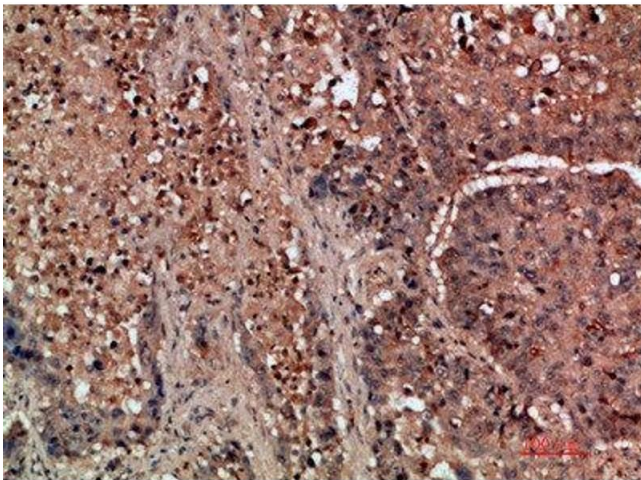
Storage: -20 °C,-80 °C

Storage Comment: Upon receipt, store at -20°C or -80°C. Avoid repeated freeze.



Immunohistochemistry

Image 1. Immunohistochemical analysis of paraffin-embedded human-lung-cancer, antibody was diluted at 1:200



Immunohistochemistry

Image 2. Immunohistochemical analysis of paraffin-embedded human-lung-cancer, antibody was diluted at 1:200