

Datasheet for ABIN7189494
anti-MLL/KMT2A antibody (AA 3850-3900)[Go to Product page](#)

4 Images

Overview

| | |
|----------------------|------------------------------------------|
| Quantity: | 100 µg |
| Target: | MLL/KMT2A (MLL) |
| Binding Specificity: | AA 3850-3900 |
| Reactivity: | Human |
| Host: | Rabbit |
| Clonality: | Polyclonal |
| Conjugate: | This MLL/KMT2A antibody is un-conjugated |
| Application: | ELISA, Immunohistochemistry (IHC) |

Product Details

| | |
|-------------------|-----------------------------------------------------------------------------------------------------------|
| Immunogen: | Synthetic peptide from Human protein at AA range: 3850-3900 |
| Isotype: | IgG |
| Cross-Reactivity: | Human, Mouse, Rat |
| Purification: | The antibody was affinity-purified from rabbit serum by affinity-chromatography using specific immunogen. |

Target Details

| | |
|-------------------|-------------------------------------------------------------------------------------------|
| Target: | MLL/KMT2A (MLL) |
| Alternative Name: | KMT2A (MLL Products) |
| Background: | ALL-1 antibody, ALL1 antibody, C-terminal cleavage product of 180 kDa antibody, CXXC-type |

Target Details

zinc finger protein 7 antibody, CXXC7 antibody, HRX antibody, HTRX1 antibody, KMT2A antibody, Lysine N-methyltransferase 2A antibody, Mll antibody, MLL cleavage product C180 antibody, MLL1 antibody, MLL1_HUMAN antibody, MLL1A antibody, N-terminal cleavage product of 320 kDa antibody, p180 antibody, p320 antibody, Trithorax-like protein antibody, TRX1 antibody, Zinc finger protein HRX antibody

UniProt: [Q03164](#)

Pathways: [Warburg Effect](#)

Application Details

Application Notes: IHC:1:50-300, ELISA:1:10000-20000,

Restrictions: For Research Use only

Handling

Format: Liquid

Buffer: PBS, pH 7.4, containing 0.02 % sodium azide as Preservative and 50 % Glycerol.

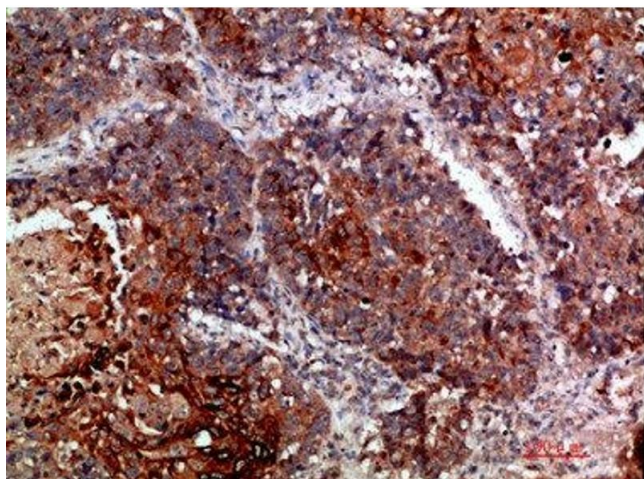
Preservative: Sodium azide

Precaution of Use: This product contains Sodium azide: a POISONOUS AND HAZARDOUS SUBSTANCE which should be handled by trained staff only.

Storage: -20 °C,-80 °C

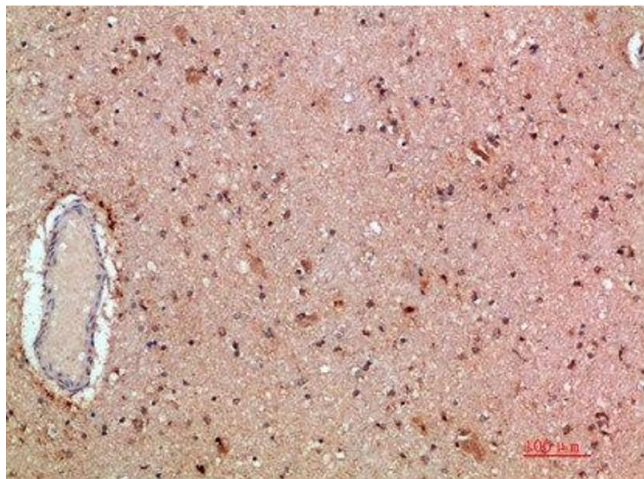
Storage Comment: Upon receipt, store at -20°C or -80°C. Avoid repeated freeze.

Images



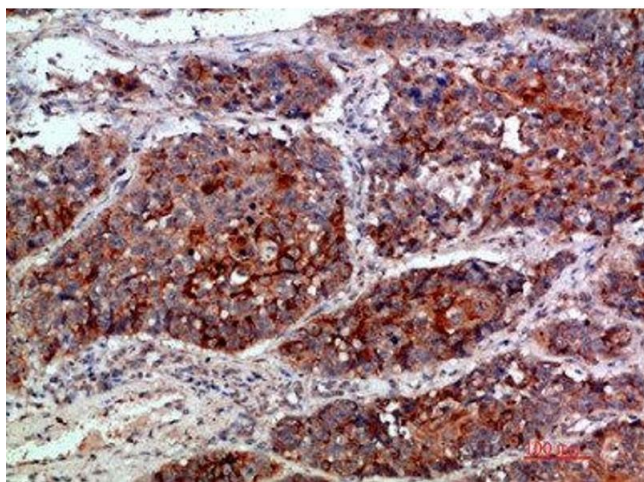
Immunohistochemistry

Image 1. Immunohistochemical analysis of paraffin-embedded human-lung-cancer, antibody was diluted at 1:200



Immunohistochemistry

Image 2. Immunohistochemical analysis of paraffin-embedded human-brain, antibody was diluted at 1:200



Immunohistochemistry

Image 3. Immunohistochemical analysis of paraffin-embedded human-lung-cancer, antibody was diluted at 1:200

Please check the [product details page](#) for more images. Overall 4 images are available for ABIN7189494.