

Datasheet for ABIN7189497
anti-HLA-DMB antibody (AA 40-100)[Go to Product page](#)

3 Images

Overview

Quantity:	100 µg
Target:	HLA-DMB
Binding Specificity:	AA 40-100
Reactivity:	Human
Host:	Rabbit
Clonality:	Polyclonal
Conjugate:	This HLA-DMB antibody is un-conjugated
Application:	ELISA, Immunohistochemistry (IHC)

Product Details

Immunogen:	Synthetic peptide from Human protein at AA range: 40-100
Isotype:	IgG
Cross-Reactivity:	Human
Purification:	The antibody was affinity-purified from rabbit serum by affinity-chromatography using specific immunogen.

Target Details

Target:	HLA-DMB
Alternative Name:	HLA-DMB (HLA-DMB Products)
Background:	HLA-DMB antibody, DMB antibody, RING7HLA class II histocompatibility antigen antibody, DM

Target Details

beta chain antibody, MHC class II antigen DMB antibody, Really interesting new gene 7 protein antibody

UniProt: [P28068](#)

Pathways: [Cancer Immune Checkpoints](#), [Human Leukocyte Antigen \(HLA\) in Adaptive Immune Response](#)

Application Details

Application Notes: IHC:1:50-300, ELISA:1:10000-20000,

Restrictions: For Research Use only

Handling

Format: Liquid

Buffer: PBS, pH 7.4, containing 0.02 % sodium azide as Preservative and 50 % Glycerol.

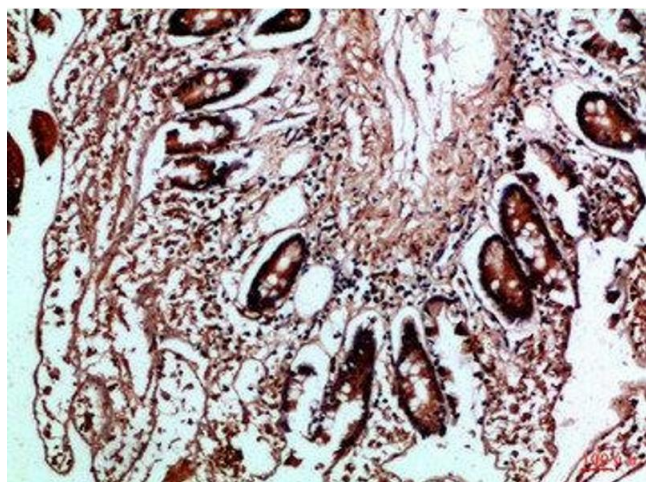
Preservative: Sodium azide

Precaution of Use: This product contains Sodium azide: a POISONOUS AND HAZARDOUS SUBSTANCE which should be handled by trained staff only.

Storage: -20 °C,-80 °C

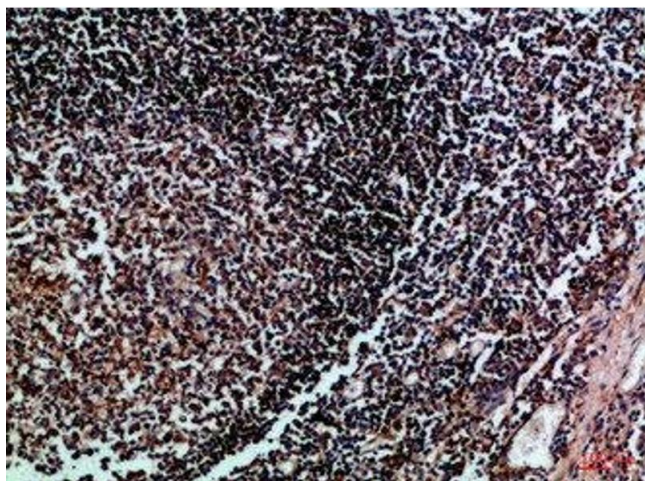
Storage Comment: Upon receipt, store at -20°C or -80°C. Avoid repeated freeze.

Images



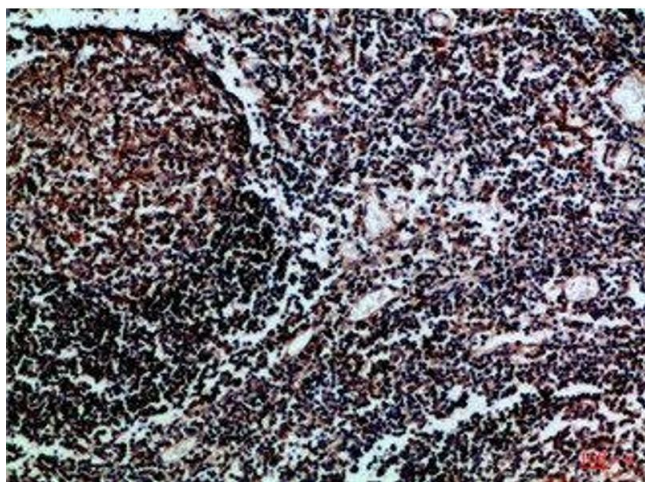
Immunohistochemistry

Image 1. Immunohistochemical analysis of paraffin-embedded Human-colon, antibody was diluted at 1:100



Immunohistochemistry

Image 2. Immunohistochemical analysis of paraffin-embedded Human-tonsil, antibody was diluted at 1:100



Immunohistochemistry

Image 3. Immunohistochemical analysis of paraffin-embedded Human-tonsil, antibody was diluted at 1:100