

Datasheet for ABIN7189501
anti-CTLA4 antibody (AA 41-90)

3 Images

[Go to Product page](#)

Overview

Quantity:	100 µg
Target:	CTLA4
Binding Specificity:	AA 41-90
Reactivity:	Human
Host:	Rabbit
Clonality:	Polyclonal
Conjugate:	This CTLA4 antibody is un-conjugated
Application:	ELISA, Immunohistochemistry (IHC)

Product Details

Immunogen:	Synthetic peptide from Human protein at AA range: 41-90
Isotype:	IgG
Cross-Reactivity:	Human
Purification:	The antibody was affinity-purified from rabbit serum by affinity-chromatography using specific immunogen.

Target Details

Target:	CTLA4
Alternative Name:	CTLA4 (CTLA4 Products)
Background:	ALPS5 antibody, CD 152 antibody, CD antibody, CD152 antibody, CD152 antigen antibody,

Target Details

CD152 isoform antibody, Celiac disease 3 antibody, CELIAC3 antibody, CTLA 4 antibody, CTLA-4 antibody, CTLA4 antibody, CTLA4_HUMAN antibody, Cytotoxic T cell associated 4 antibody, Cytotoxic T lymphocyte antigen 4 antibody, Cytotoxic T lymphocyte associated 4 antibody, Cytotoxic T lymphocyte associated 4, soluble isoform, included antibody, Cytotoxic T lymphocyte associated antigen 4 antibody, Cytotoxic T lymphocyte associated antigen 4 short spliced form antibody, Cytotoxic T lymphocyte associated protein 4 antibody, Cytotoxic T lymphocyte associated serine esterase 4 antibody, Cytotoxic T lymphocyte protein 4 antibody, Cytotoxic T-lymphocyte protein 4 antibody, Cytotoxic T-lymphocyte-associated antigen 4 antibody, GRD4 antibody, GSE antibody, ICOS antibody, IDDM12 antibody, insulin-dependent diabetes mellitus 12 antibody, Ligand and transmembrane spliced cytotoxic T lymphocyte associated antigen 4 antibody, OTTHUMP00000216623 antibody

UniProt: [P16410](#)

Pathways: [Cancer Immune Checkpoints](#)

Application Details

Application Notes: IHC:1:50-300, ELISA:1:10000-20000,

Restrictions: For Research Use only

Handling

Format: Liquid

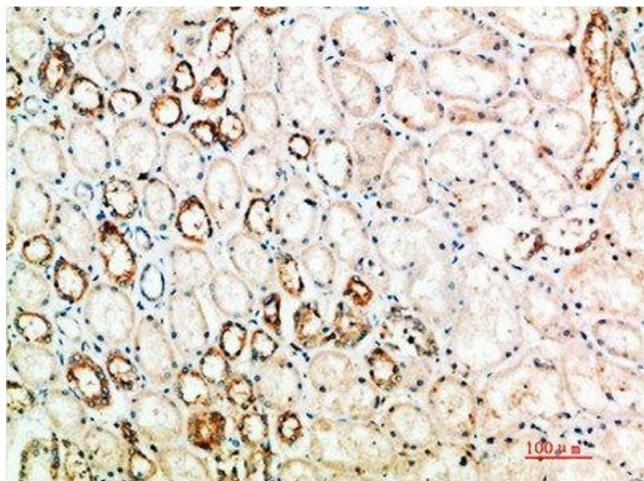
Buffer: PBS, pH 7.4, containing 0.02 % sodium azide as Preservative and 50 % Glycerol.

Preservative: Sodium azide

Precaution of Use: This product contains Sodium azide: a POISONOUS AND HAZARDOUS SUBSTANCE which should be handled by trained staff only.

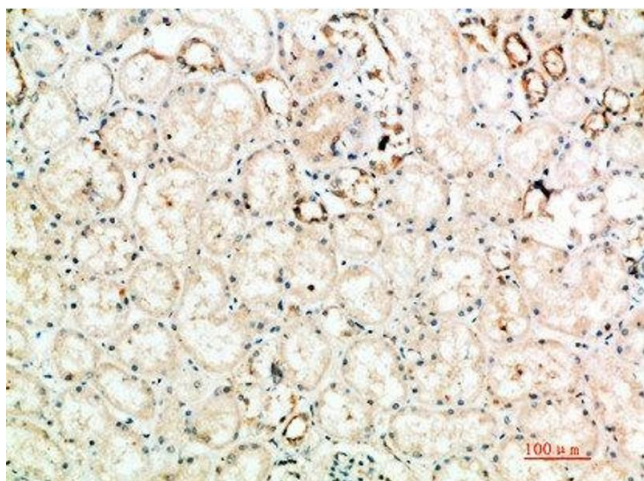
Storage: -20 °C,-80 °C

Storage Comment: Upon receipt, store at -20°C or -80°C. Avoid repeated freeze.



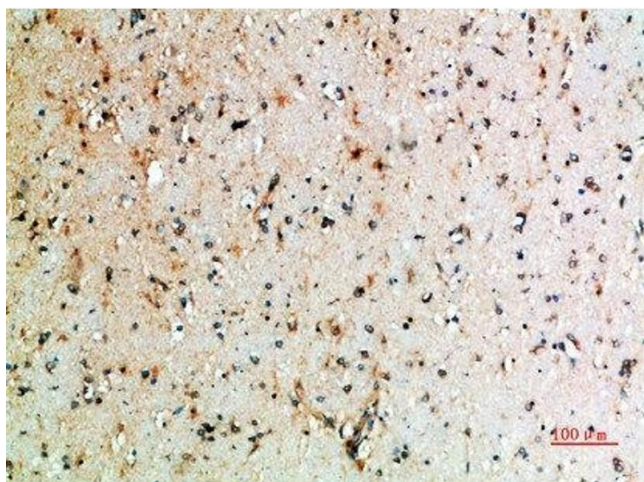
Immunohistochemistry

Image 1. Immunohistochemical analysis of paraffin-embedded human-kidney, antibody was diluted at 1:200



Immunohistochemistry

Image 2. Immunohistochemical analysis of paraffin-embedded human-kidney, antibody was diluted at 1:200



Immunohistochemistry

Image 3. Immunohistochemical analysis of paraffin-embedded human-brain, antibody was diluted at 1:200