

Datasheet for ABIN7189502
anti-LTB antibody (AA 41-90)[Go to Product page](#)

3 Images

Overview

Quantity:	100 µg
Target:	LTB
Binding Specificity:	AA 41-90
Reactivity:	Human
Host:	Rabbit
Clonality:	Polyclonal
Conjugate:	This LTB antibody is un-conjugated
Application:	ELISA, Immunohistochemistry (IHC)

Product Details

Immunogen:	Synthetic peptide from Human protein at AA range: 41-90
Isotype:	IgG
Cross-Reactivity:	Human
Purification:	The antibody was affinity-purified from rabbit serum by affinity-chromatography using specific immunogen.

Target Details

Target:	LTB
Alternative Name:	LTB (LTB Products)
Background:	LT beta antibody, LT-beta antibody, Ltb antibody, lymphotoxin beta antibody, Lymphotoxin-beta

Target Details

antibody, p33 antibody, TNF-C antibody, TNFC antibody, TNFC_HUMAN antibody, TNFSF3 antibody, Tumor necrosis factor C antibody, Tumor necrosis factor ligand superfamily member 3 antibody

UniProt: [Q06643](#)

Pathways: [NF-kappaB Signaling](#)

Application Details

Application Notes: IHC:1:50-300, ELISA:1:10000-20000,

Restrictions: For Research Use only

Handling

Format: Liquid

Buffer: PBS, pH 7.4, containing 0.02 % sodium azide as Preservative and 50 % Glycerol.

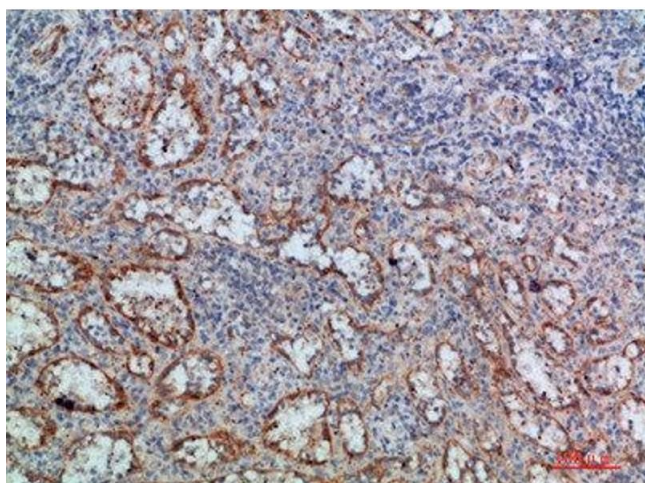
Preservative: Sodium azide

Precaution of Use: This product contains Sodium azide: a POISONOUS AND HAZARDOUS SUBSTANCE which should be handled by trained staff only.

Storage: -20 °C, -80 °C

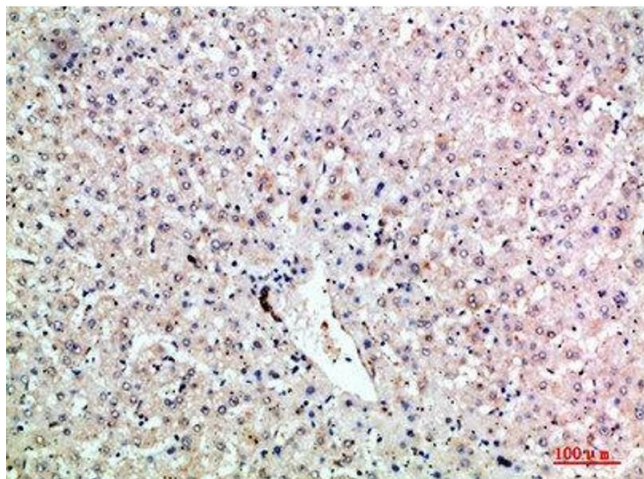
Storage Comment: Upon receipt, store at -20°C or -80°C. Avoid repeated freeze.

Images



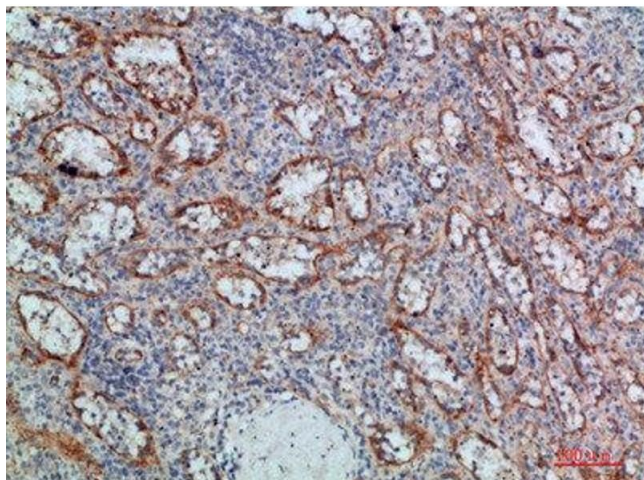
Immunohistochemistry

Image 1. Immunohistochemical analysis of paraffin-embedded human-spleen, antibody was diluted at 1:200



Immunohistochemistry

Image 2. Immunohistochemical analysis of paraffin-embedded human-liver, antibody was diluted at 1:200



Immunohistochemistry

Image 3. Immunohistochemical analysis of paraffin-embedded human-spleen, antibody was diluted at 1:200