

Datasheet for ABIN7189504
anti-PRC1 antibody (AA 460-520)[Go to Product page](#)

1 Image

Overview

Quantity:	100 µg
Target:	PRC1
Binding Specificity:	AA 460-520
Reactivity:	Human
Host:	Rabbit
Clonality:	Polyclonal
Conjugate:	This PRC1 antibody is un-conjugated
Application:	Western Blotting (WB), ELISA

Product Details

Immunogen:	Synthetic peptide from Human protein at AA range: 460-520
Isotype:	IgG
Cross-Reactivity:	Human
Purification:	The antibody was affinity-purified from rabbit serum by affinity-chromatography using specific immunogen.

Target Details

Target:	PRC1
Alternative Name:	PRC1 (PRC1 Products)
Background:	Anaphase spindle elongation 1 homolog antibody, ASE1 antibody, PRC1 antibody,

Target Details

PRC1_HUMAN antibody, Protein regulating cytokinesis 1 antibody, Protein regulator of cytokinesis 1 antibody

UniProt: [O43663](#)

Application Details

Application Notes: WB:1:500-2000, ELISA:1:10000-20000,

Restrictions: For Research Use only

Handling

Format: Liquid

Buffer: PBS, pH 7.4, containing 0.02 % sodium azide as Preservative and 50 % Glycerol.

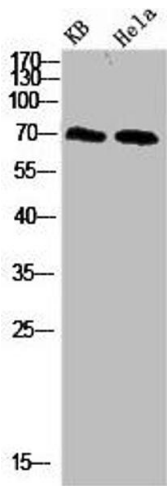
Preservative: Sodium azide

Precaution of Use: This product contains Sodium azide: a POISONOUS AND HAZARDOUS SUBSTANCE which should be handled by trained staff only.

Storage: -20 °C,-80 °C

Storage Comment: Upon receipt, store at -20°C or -80°C. Avoid repeated freeze.

Images



Western Blotting

Image 1. Western blot analysis of 293T HeLa 3T3 lysate, antibody was diluted at 500. Secondary antibody was diluted at 1:20000