

Datasheet for ABIN7189505  
**anti-c-Rel antibody (AA 491-540)**

## 5 Images

[Go to Product page](#)

## Overview

Quantity:	100 µg
Target:	c-Rel
Binding Specificity:	AA 491-540
Reactivity:	Human
Host:	Rabbit
Clonality:	Polyclonal
Conjugate:	This c-Rel antibody is un-conjugated
Application:	Western Blotting (WB), ELISA

## Product Details

Immunogen:	Synthetic peptide from Human protein at AA range: 491-540
Isotype:	IgG
Cross-Reactivity:	Human, Mouse
Purification:	The antibody was affinity-purified from rabbit serum by affinity-chromatography using specific immunogen.

## Target Details

Target:	c-Rel
Alternative Name:	REL ( <a href="#">c-Rel Products</a> )
Background:	Avian reticuloendotheliosis antibody, C REL antibody, C Rel protein antibody, c Rel proto

## Target Details

oncogene protein antibody, Oncogene REL antibody, Oncogene REL avian reticuloendotheliosis antibody, Proto-oncogene c-Rel antibody, REL antibody, REL\_HUMAN antibody, v rel avian reticuloendotheliosis viral oncogene homolog antibody, v rel reticuloendotheliosis viral oncogene homolog antibody, V rel reticuloendotheliosis viral oncogene homolog (avian) antibody

UniProt: [Q04864](#)

## Application Details

Application Notes: WB:1:500-10000, ELISA:1:10000,

Restrictions: For Research Use only

## Handling

Format: Liquid

Buffer: PBS, pH 7.4, containing 0.02 % sodium azide as Preservative and 50 % Glycerol.

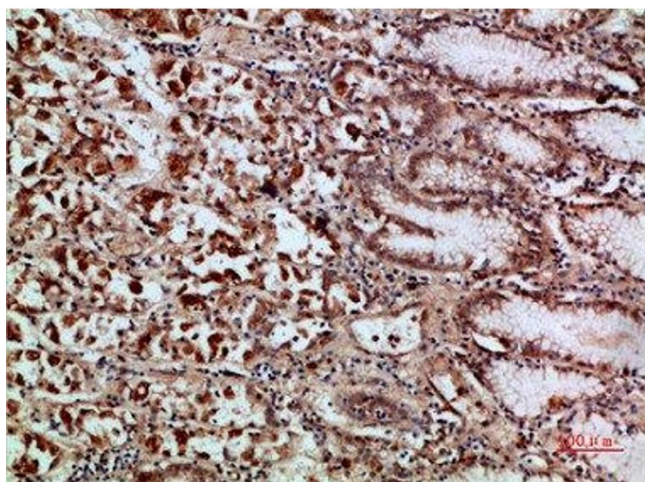
Preservative: Sodium azide

Precaution of Use: This product contains Sodium azide: a POISONOUS AND HAZARDOUS SUBSTANCE which should be handled by trained staff only.

Storage: -20 °C,-80 °C

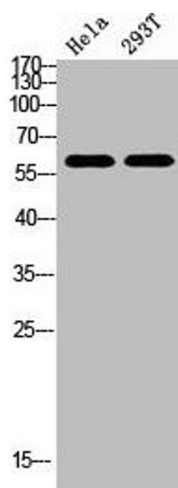
Storage Comment: Upon receipt, store at -20°C or -80°C. Avoid repeated freeze.

## Images



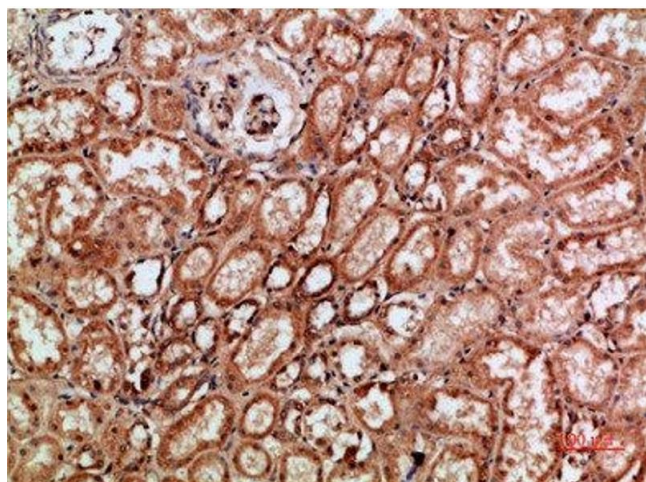
### Immunohistochemistry

**Image 1.** Immunohistochemical analysis of paraffin-embedded human-stomach, antibody was diluted at 1:200



#### Western Blotting

**Image 2.** Western Blot analysis of HELA, 293T cells using Antibody diluted at 800. Secondary antibody was diluted at 1:20000



#### Immunohistochemistry

**Image 3.** Immunohistochemical analysis of paraffin-embedded human-kidney, antibody was diluted at 1:200

Please check the [product details page](#) for more images. Overall 5 images are available for ABIN7189505.