



[Go to Product page](#)

Datasheet for ABIN7189507
anti-CCL15 antibody (AA 51-100)

1 Image

Overview

Quantity:	100 µg
Target:	CCL15
Binding Specificity:	AA 51-100
Reactivity:	Human
Host:	Rabbit
Clonality:	Polyclonal
Conjugate:	This CCL15 antibody is un-conjugated
Application:	ELISA, Immunohistochemistry (IHC)

Product Details

Immunogen:	Synthetic peptide from Human protein at AA range: 51-100
Isotype:	IgG
Cross-Reactivity:	Human
Purification:	The antibody was affinity-purified from rabbit serum by affinity-chromatography using specific immunogen.

Target Details

Target:	CCL15
Alternative Name:	CCL15 (CCL15 Products)
Background:	C-C motif chemokine 15 antibody, C-C motif chemokine ligand 15 antibody, CC chemokine 3

Target Details

antibody, CCL15 antibody, CCL15(29-92) antibody, CCL15_HUMAN antibody, Chemokine (C C motif) ligand 15 antibody, Chemokine CC-2 antibody, Chemokine CC2 antibody, HCC-2 antibody, HCC2 antibody, HMRP 2B antibody, HMRP2B antibody, Leukotactin 1 antibody, Leukotactin-1 antibody, LKN-1 antibody, LKN1 antibody, Macrophage inflammatory protein 5 antibody, MIP 1D antibody, MIP-1 delta antibody, MIP-1D antibody, MIP-5 antibody, MIP1 delta antibody, MIP1d antibody, MIP5 antibody, MRP 2B antibody, Mrp-2b antibody, Mrp2b antibody, NCC 3 antibody, NCC-3 antibody, NCC3 antibody, New CC chemokine 3 antibody, OTTHUMP00000163955 antibody, SCYA15 antibody, SCYL3 antibody, Small inducible cytokine A15 antibody, Small inducible cytokine subfamily A (Cys Cys), member 15 antibody, Small-inducible cytokine A15 antibody, SY15 antibody

UniProt: [Q16663](#)

Application Details

Application Notes: IHC:1:50-300, ELISA:1:10000-20000,

Restrictions: For Research Use only

Handling

Format: Liquid

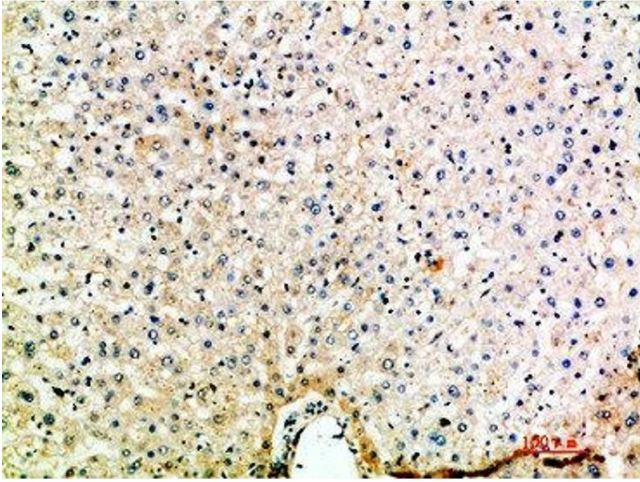
Buffer: PBS, pH 7.4, containing 0.02 % sodium azide as Preservative and 50 % Glycerol.

Preservative: Sodium azide

Precaution of Use: This product contains Sodium azide: a POISONOUS AND HAZARDOUS SUBSTANCE which should be handled by trained staff only.

Storage: -20 °C,-80 °C

Storage Comment: Upon receipt, store at -20°C or -80°C. Avoid repeated freeze.



Immunohistochemistry

Image 1. Immunohistochemical analysis of paraffin-embedded human-liver, antibody was diluted at 1:200