



[Go to Product page](#)

Datasheet for ABIN7189509
anti-DLEU7 antibody (AA 51-100)

2 Images

Overview

Quantity:	100 µg
Target:	DLEU7
Binding Specificity:	AA 51-100
Reactivity:	Human
Host:	Rabbit
Clonality:	Polyclonal
Conjugate:	This DLEU7 antibody is un-conjugated
Application:	ELISA, Immunohistochemistry (IHC)

Product Details

Immunogen:	Synthetic peptide from Human protein at AA range: 51-100
Isotype:	IgG
Cross-Reactivity:	Human
Purification:	The antibody was affinity-purified from rabbit serum by affinity-chromatography using specific immunogen.

Target Details

Target:	DLEU7
Alternative Name:	DLEU7 (DLEU7 Products)
Background:	Deleted in lymphocytic leukemia 7 antibody, DLEU7 antibody, LEU7_HUMAN antibody,

Target Details

Leukemia-associated protein 7 antibody

UniProt: [Q6UYE1](#)

Application Details

Application Notes: IHC:1:50-300, ELISA:1:10000-20000,

Restrictions: For Research Use only

Handling

Format: Liquid

Buffer: PBS, pH 7.4, containing 0.02 % sodium azide as Preservative and 50 % Glycerol.

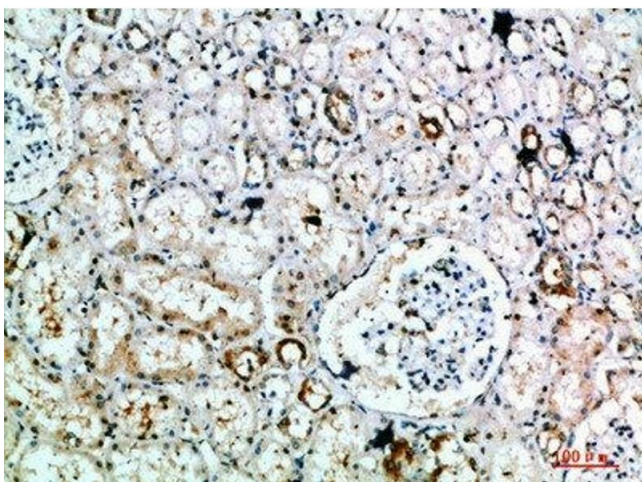
Preservative: Sodium azide

Precaution of Use: This product contains Sodium azide: a POISONOUS AND HAZARDOUS SUBSTANCE which should be handled by trained staff only.

Storage: -20 °C,-80 °C

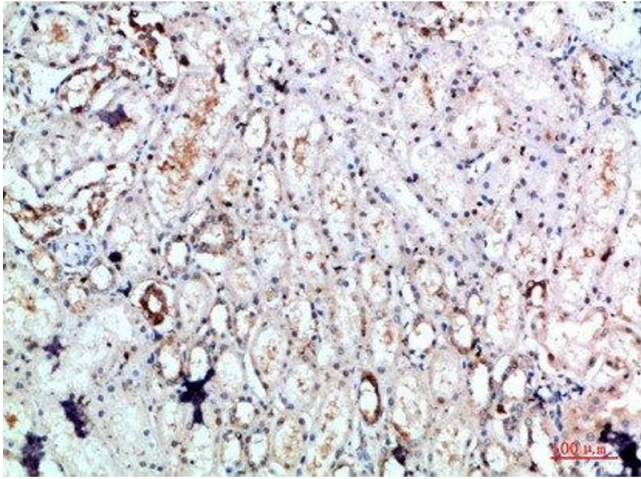
Storage Comment: Upon receipt, store at -20°C or -80°C. Avoid repeated freeze.

Images



Immunohistochemistry

Image 1. Immunohistochemical analysis of paraffin-embedded human-kidney, antibody was diluted at 1:200



Immunohistochemistry

Image 2. Immunohistochemical analysis of paraffin-embedded human-kidney, antibody was diluted at 1:200