



[Go to Product page](#)

Datasheet for ABIN7189515  
**anti-IKBKG antibody (AA 60-120)**

5 Images

Overview

Quantity:	100 µg
Target:	IKBKG
Binding Specificity:	AA 60-120
Reactivity:	Human
Host:	Rabbit
Clonality:	Polyclonal
Conjugate:	This IKBKG antibody is un-conjugated
Application:	Western Blotting (WB), ELISA, Immunohistochemistry (IHC)

Product Details

Immunogen:	Synthetic peptide from Human protein at AA range: 60-120
Isotype:	IgG
Cross-Reactivity:	Human, Mouse, Rat
Purification:	The antibody was affinity-purified from rabbit serum by affinity-chromatography using specific immunogen.

Target Details

Target:	IKBKG
Alternative Name:	IKBKG ( <a href="#">IKBKG Products</a> )
Background:	IκB kinase associated protein 1 antibody, IκB kinase subunit gamma antibody, Inhibitor of

## Target Details

---

nuclear factor kappa B kinase subunit gamma antibody, AMCBX1 antibody, FIP 3 antibody, FIP-3 antibody, FIP3 antibody, Fip3p antibody, I kappa B kinase gamma antibody, I-kappa-B kinase subunit gamma antibody, IκB kinase gamma subunit antibody, IκB kinase subunit gamma antibody, IκB kinase-associated protein 1 antibody, Iκbkg antibody, IKK gamma antibody, IKK-gamma antibody, IKKAP1 antibody, IKKG antibody, IMD33 antibody, Incontinentia pigmenti antibody, Inhibitor of kappa light polypeptide gene enhancer in B cells, kinase gamma antibody, Inhibitor of kappa light polypeptide gene enhancer in B cells, kinase of, gamma antibody, Inhibitor of nuclear factor kappa-B kinase subunit gamma antibody, IP antibody, IP1 antibody, IP2 antibody, IPD2 antibody, NEMO antibody, NEMO\_HUMAN antibody, NF kappa B essential modifier antibody, NF kappa B essential modulator antibody, NF-kappa-B essential modifier antibody, NF-kappa-B essential modulator antibody, ZC2HC9 antibody

UniProt: [Q9Y6K9](#)

Pathways: [NF-kappaB Signaling](#), [RTK Signaling](#), [TCR Signaling](#), [TLR Signaling](#), [Fc-epsilon Receptor Signaling Pathway](#), [Activation of Innate immune Response](#), [M Phase](#), [Production of Molecular Mediator of Immune Response](#), [Hepatitis C](#), [Protein targeting to Nucleus](#), [Toll-Like Receptors Cascades](#), [BCR Signaling](#), [Ubiquitin Proteasome Pathway](#), [S100 Proteins](#)

## Application Details

---

Application Notes: WB:1:500-2000, IHC:1:50-300, ELISA:1:10000-20000,

Restrictions: For Research Use only

## Handling

---

Format: Liquid

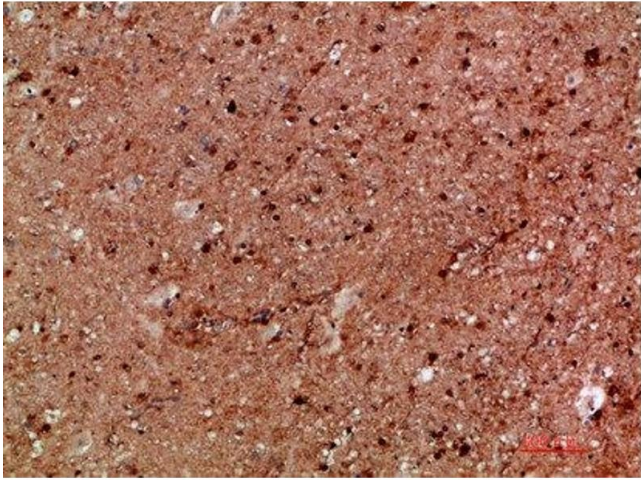
Buffer: PBS, pH 7.4, containing 0.02 % sodium azide as Preservative and 50 % Glycerol.

Preservative: Sodium azide

Precaution of Use: This product contains Sodium azide: a POISONOUS AND HAZARDOUS SUBSTANCE which should be handled by trained staff only.

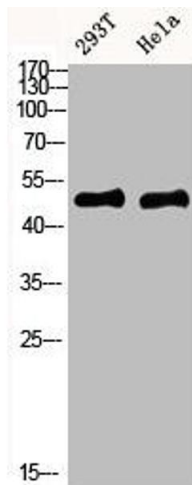
Storage: -20 °C,-80 °C

Storage Comment: Upon receipt, store at -20°C or -80°C. Avoid repeated freeze.



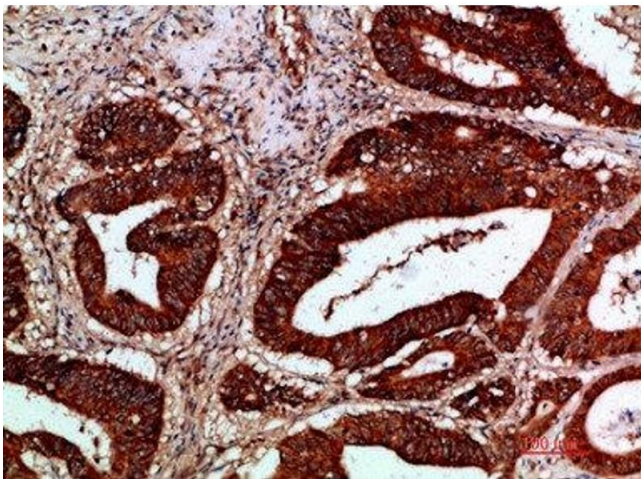
### Immunohistochemistry

**Image 1.** Immunohistochemical analysis of paraffin-embedded human-brain, antibody was diluted at 1:200



### Western Blotting

**Image 2.** Western blot analysis of mouse-kidney mouse-brain mouse-lung mouse-heart 293T lysate, antibody was diluted at 1000. Secondary antibody was diluted at 1:20000



### Immunohistochemistry

**Image 3.** Immunohistochemical analysis of paraffin-embedded human-colon-cancer, antibody was diluted at 1:200

Please check the [product details page](#) for more images. Overall 5 images are available for ABIN7189515.