

Datasheet for ABIN7189516
anti-PDGFC antibody (AA 61-110)[Go to Product page](#)

4 Images

Overview

Quantity:	100 µg
Target:	PDGFC
Binding Specificity:	AA 61-110
Reactivity:	Human
Host:	Rabbit
Clonality:	Polyclonal
Conjugate:	This PDGFC antibody is un-conjugated
Application:	Immunohistochemistry (IHC), ELISA

Product Details

Immunogen:	Synthetic peptide from Human protein at AA range: 61-110
Isotype:	IgG
Cross-Reactivity:	Human, Mouse, Rat
Purification:	The antibody was affinity-purified from rabbit serum by affinity-chromatography using specific immunogen.

Target Details

Target:	PDGFC
Alternative Name:	PDGFC (PDGFC Products)
Target Type:	Viral Protein

Target Details

Background: Fallotein antibody, hSCDGF antibody, PDGF-C antibody, PDGFC antibody, PDGFC latent form antibody, PDGFC receptor-binding form antibody, PDGFC_HUMAN antibody, Platelet derived growth factor C antibody, Platelet-derived growth factor C, receptor-binding form antibody, SCDGF antibody, Secretory growth factor like protein antibody, Secretory growth factor like protein fallotein antibody, Spinal cord derived growth factor antibody, Spinal cord-derived growth factor antibody, VEGF E antibody, VEGF-E antibody

UniProt: [Q9NRA1](#)

Pathways: [RTK Signaling](#), [Platelet-derived growth Factor Receptor Signaling](#)

Application Details

Application Notes: IHC:1:50-300, ELISA:1:10000-20000,

Restrictions: For Research Use only

Handling

Format: Liquid

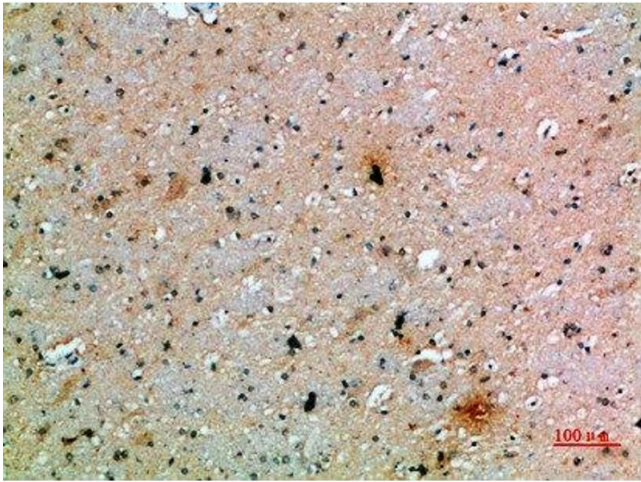
Buffer: PBS, pH 7.4, containing 0.02 % sodium azide as Preservative and 50 % Glycerol.

Preservative: Sodium azide

Precaution of Use: This product contains Sodium azide: a POISONOUS AND HAZARDOUS SUBSTANCE which should be handled by trained staff only.

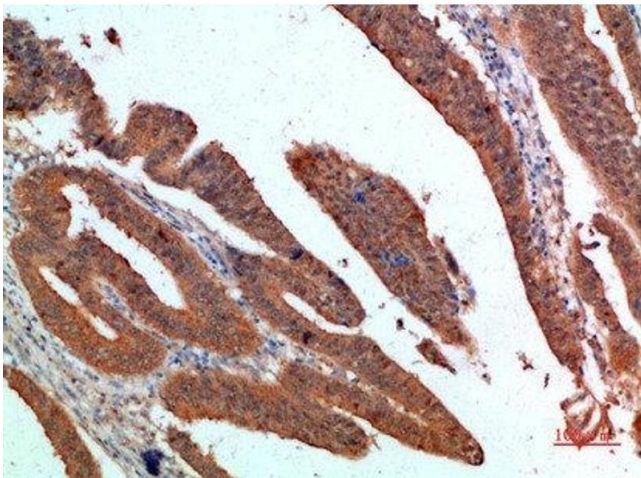
Storage: -20 °C, -80 °C

Storage Comment: Upon receipt, store at -20°C or -80°C. Avoid repeated freeze.



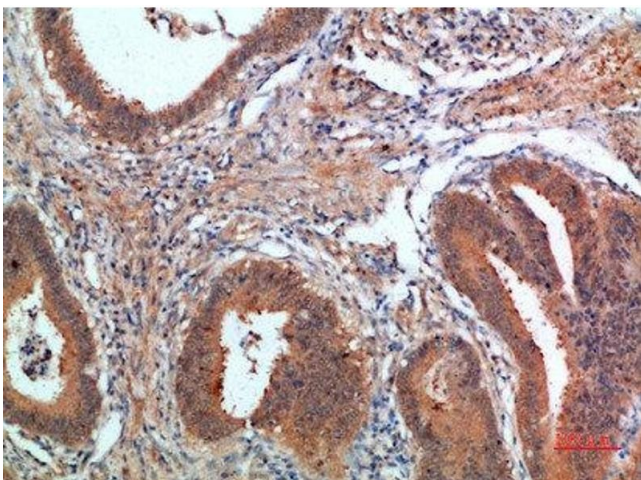
Immunohistochemistry

Image 1. Immunohistochemical analysis of paraffin-embedded human-brain, antibody was diluted at 1:200



Immunohistochemistry

Image 2. Immunohistochemical analysis of paraffin-embedded human-colon-cancer, antibody was diluted at 1:200



Immunohistochemistry

Image 3. Immunohistochemical analysis of paraffin-embedded human-colon-cancer, antibody was diluted at 1:200

Please check the [product details page](#) for more images. Overall 4 images are available for ABIN7189516.