

Datasheet for ABIN7189520
anti-FLT4 antibody (AA 640-700)



[Go to Product page](#)

2 Images

Overview

Quantity:	100 µg
Target:	FLT4
Binding Specificity:	AA 640-700
Reactivity:	Human
Host:	Rabbit
Clonality:	Polyclonal
Conjugate:	This FLT4 antibody is un-conjugated
Application:	Western Blotting (WB), Immunohistochemistry (IHC), ELISA

Product Details

Immunogen:	Synthetic peptide from Human protein at AA range: 640-700
Isotype:	IgG
Cross-Reactivity:	Human, Mouse, Rat
Purification:	The antibody was affinity-purified from rabbit serum by affinity-chromatography using specific immunogen.

Target Details

Target:	FLT4
Alternative Name:	FLT4 (FLT4 Products)
Background:	EC 2.7.10.1 antibody, flt 4 antibody, FLT-4 antibody, FLT4 antibody, FLT41 antibody, Fms

Target Details

related tyrosine kinase 4 antibody, Fms-like tyrosine kinase 4 antibody, LMPH1A antibody, PCL antibody, Soluble VEGFR3 variant 1 antibody, Soluble VEGFR3 variant 2 antibody, Soluble VEGFR3 variant 3 antibody, Tyrosine protein kinase receptor FLT4 antibody, Tyrosine-protein kinase receptor FLT4 antibody, Vascular endothelial growth factor receptor 3 antibody, Vascular endothelial growth factor receptor 3 precursor antibody, VEGF R3 antibody, VEGFR 3 antibody, VEGFR-3 antibody, VEGFR3 antibody, VGFR3_HUMAN antibody

UniProt: [P35916](#)

Pathways: [RTK Signaling, Signaling Events mediated by VEGFR1 and VEGFR2, VEGF Signaling](#)

Application Details

Application Notes: WB:1:500-2000, IHC:1:50-300, ELISA:1:10000-20000,

Restrictions: For Research Use only

Handling

Format: Liquid

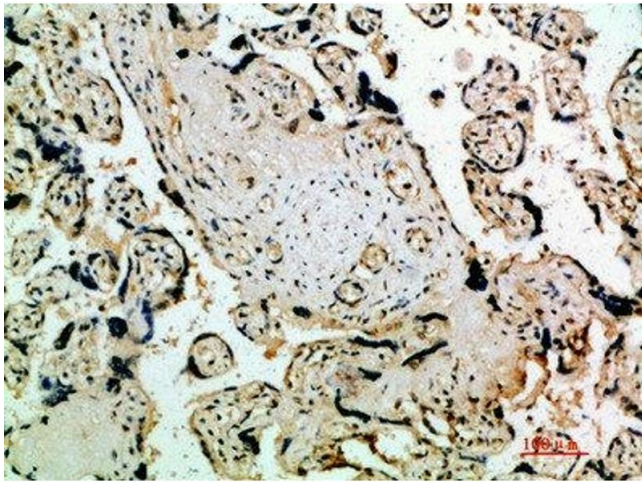
Buffer: PBS, pH 7.4, containing 0.02 % sodium azide as Preservative and 50 % Glycerol.

Preservative: Sodium azide

Precaution of Use: This product contains Sodium azide: a POISONOUS AND HAZARDOUS SUBSTANCE which should be handled by trained staff only.

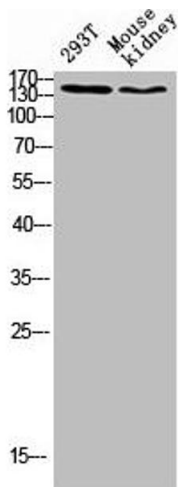
Storage: -20 °C,-80 °C

Storage Comment: Upon receipt, store at -20°C or -80°C. Avoid repeated freeze.



Immunohistochemistry

Image 1. Immunohistochemical analysis of paraffin-embedded human-placenta, antibody was diluted at 1:200



Western Blotting

Image 2. Western blot analysis of 293T lysate, mouse kidney antibody was diluted at 500. Secondary antibody was diluted at 1:20000