

Datasheet for ABIN7189522

anti-EPH Receptor B3 antibody (AA 650-700)[Go to Product page](#)**3** Images

Overview

Quantity:	100 µg
Target:	EPH Receptor B3 (EPHB3)
Binding Specificity:	AA 650-700
Reactivity:	Human
Host:	Rabbit
Clonality:	Polyclonal
Conjugate:	This EPH Receptor B3 antibody is un-conjugated
Application:	ELISA, Immunohistochemistry (IHC)

Product Details

Immunogen:	Synthetic peptide from Human protein at AA range: 650-700
Isotype:	IgG
Cross-Reactivity:	Human, Mouse, Rat
Purification:	The antibody was affinity-purified from rabbit serum by affinity-chromatography using specific immunogen.

Target Details

Target:	EPH Receptor B3 (EPHB3)
Alternative Name:	EPHB3 (EPHB3 Products)
Background:	Cek10 antibody, EK2 antibody, Embryonic kinase 2 antibody, EPH Like Tyrosine Kinase 2

Target Details

antibody, EPH receptor B3 antibody, EPH-like kinase 2 antibody, ephb3 antibody, EPHB3_HUMAN antibody, Ephrin receptor EphB3 antibody, Ephrin type B receptor 3 antibody, Ephrin type-B receptor 3 antibody, ETK2 antibody, hEK2 antibody, Human Embryo Kinase 2 antibody, Mdk5 antibody, Sek4 antibody, TYRO6 antibody, Tyrosine protein kinase receptor HEK2 antibody, Tyrosine protein kinase TYRO6 antibody, Tyrosine-protein kinase TYRO6 antibody

UniProt: [P54753](#)

Pathways: [RTK Signaling](#)

Application Details

Application Notes: IHC:1:50-300, ELISA:1:10000-20000,

Restrictions: For Research Use only

Handling

Format: Liquid

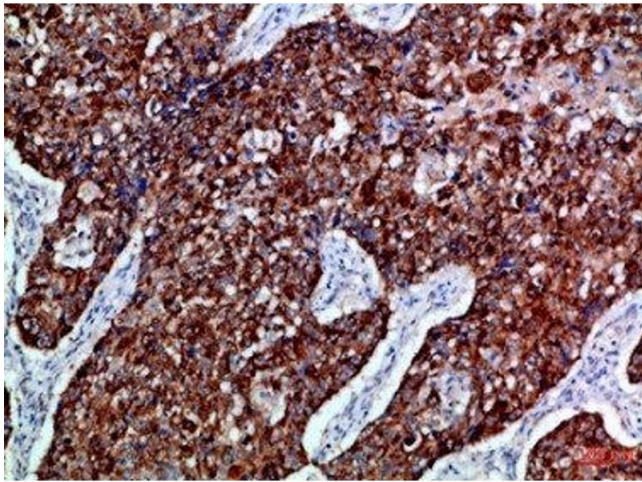
Buffer: PBS, pH 7.4, containing 0.02 % sodium azide as Preservative and 50 % Glycerol.

Preservative: Sodium azide

Precaution of Use: This product contains Sodium azide: a POISONOUS AND HAZARDOUS SUBSTANCE which should be handled by trained staff only.

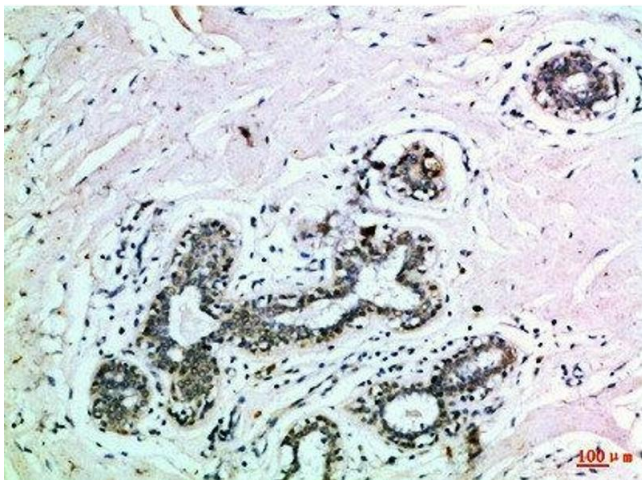
Storage: -20 °C, -80 °C

Storage Comment: Upon receipt, store at -20°C or -80°C. Avoid repeated freeze.



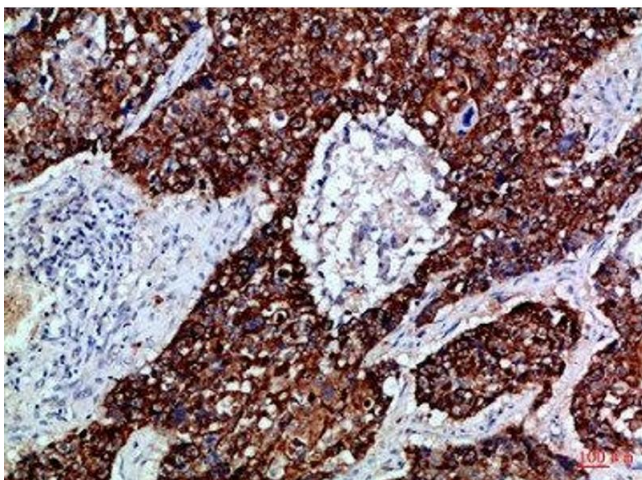
Immunohistochemistry

Image 1. Immunohistochemical analysis of paraffin-embedded Human-lung-cancer, antibody was diluted at 1:100



Immunohistochemistry

Image 2. Immunohistochemical analysis of paraffin-embedded Human-breast, antibody was diluted at 1:100



Immunohistochemistry

Image 3. Immunohistochemical analysis of paraffin-embedded Human-lung-cancer, antibody was diluted at 1:100