

Datasheet for ABIN7189526
anti-GREM2 antibody (AA 71-120)

5 Images

[Go to Product page](#)

Overview

Quantity:	100 µg
Target:	GREM2
Binding Specificity:	AA 71-120
Reactivity:	Human
Host:	Rabbit
Clonality:	Polyclonal
Conjugate:	This GREM2 antibody is un-conjugated
Application:	Western Blotting (WB), Immunohistochemistry (IHC), ELISA

Product Details

Immunogen:	Synthetic peptide from Human protein at AA range: 71-120
Isotype:	IgG
Cross-Reactivity:	Human, Mouse
Purification:	The antibody was affinity-purified from rabbit serum by affinity-chromatography using specific immunogen.

Target Details

Target:	GREM2
Alternative Name:	GREM2 (GREM2 Products)
Background:	BMP antagonist 2 antibody, CKTSF1B2 antibody, Cysteine knot superfamily 1 antibody,

Target Details

Cysteine knot superfamily 1 BMP antagonist 2 antibody, DAN domain family member 3 antibody, DAND 3 antibody, DAND3 antibody, GREM 2 antibody, Grem2 antibody, GREM2_HUMAN antibody, Gremlin 2 antibody, Gremlin 2 cysteine knot superfamily homolog antibody, Gremlin-2 antibody, Gremlin2 antibody, PRDC antibody, Protein related to DAN and cerberus antibody

UniProt: [Q9H772](#)

Application Details

Application Notes: WB:1:500-1:2000, IHC:1:100-1:300, ELISA:1:20000,

Restrictions: For Research Use only

Handling

Format: Liquid

Buffer: PBS, pH 7.4, containing 0.02 % sodium azide as Preservative and 50 % Glycerol.

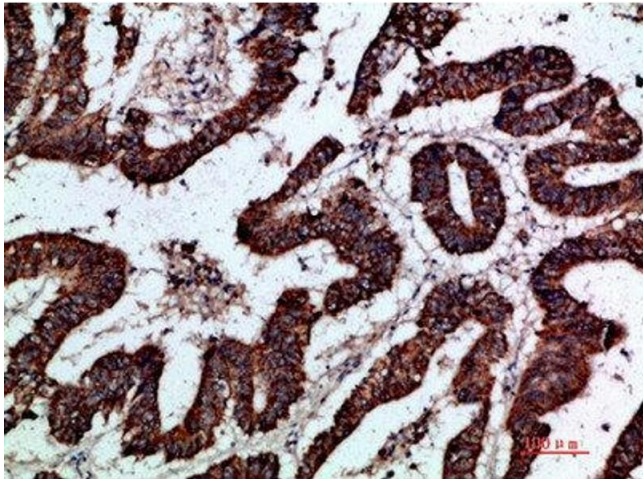
Preservative: Sodium azide

Precaution of Use: This product contains Sodium azide: a POISONOUS AND HAZARDOUS SUBSTANCE which should be handled by trained staff only.

Storage: -20 °C,-80 °C

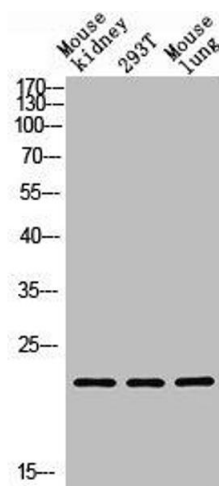
Storage Comment: Upon receipt, store at -20°C or -80°C. Avoid repeated freeze.

Images



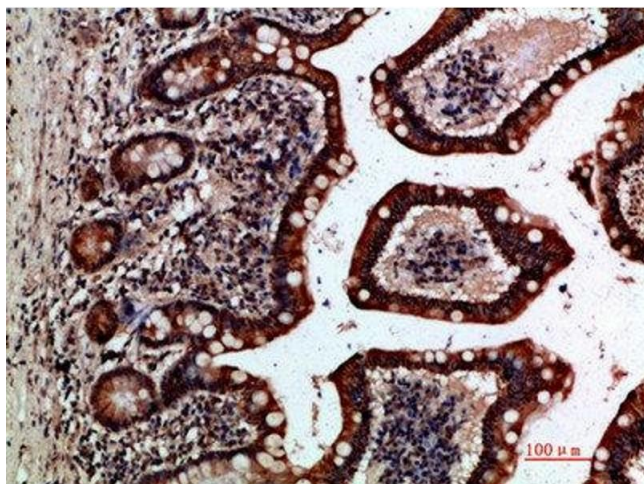
Immunohistochemistry

Image 1. Immunohistochemical analysis of paraffin-embedded human-colon-cancer, antibody was diluted at 1:200



Western Blotting

Image 2. Western blot analysis of Mouse kidney, 293T, Mouse lung, antibody was diluted at 1000. Secondary antibody was diluted at 1:20000



Immunohistochemistry

Image 3. Immunohistochemical analysis of paraffin-embedded human-small-intestine, antibody was diluted at 1:200

Please check the [product details page](#) for more images. Overall 5 images are available for ABIN7189526.