



[Go to Product page](#)

Datasheet for ABIN7189529
anti-CGRP antibody (AA 80-141)

1 Image

Overview

Quantity:	100 µg
Target:	CGRP (CALCA)
Binding Specificity:	AA 80-141
Reactivity:	Human
Host:	Rabbit
Clonality:	Polyclonal
Conjugate:	This CGRP antibody is un-conjugated
Application:	ELISA, Western Blotting (WB)

Product Details

Immunogen:	Synthetic peptide from Human protein at AA range: 80-141
Isotype:	IgG
Cross-Reactivity:	Human
Purification:	The antibody was affinity-purified from rabbit serum by affinity-chromatography using specific immunogen.

Target Details

Target:	CGRP (CALCA)
Alternative Name:	CALCA (CALCA Products)
Background:	CALCA antibody, CALC1Calcitonin [Cleaved into: Calcitonin, Katalcalcin antibody, Calcitonin

Target Details

carboxyl-terminal peptide antibody, CCP antibody, PDN-21)] antibody

UniProt: [P01258](#)

Pathways: [Hormone Activity](#), [cAMP Metabolic Process](#), [Myometrial Relaxation and Contraction](#), [Regulation of G-Protein Coupled Receptor Protein Signaling](#), [Skeletal Muscle Fiber Development](#), [Feeding Behaviour](#)

Application Details

Application Notes: WB:1:500-2000, ELISA:1:10000-20000,

Restrictions: For Research Use only

Handling

Format: Liquid

Buffer: PBS, pH 7.4, containing 0.02 % sodium azide as Preservative and 50 % Glycerol.

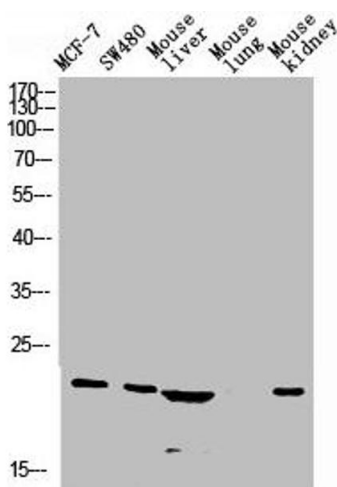
Preservative: Sodium azide

Precaution of Use: This product contains Sodium azide: a POISONOUS AND HAZARDOUS SUBSTANCE which should be handled by trained staff only.

Storage: -20 °C,-80 °C

Storage Comment: Upon receipt, store at -20°C or -80°C. Avoid repeated freeze.

Images



Western Blotting

Image 1. Western blot analysis of Jurkat U937 Raji mouse-eye lysate, antibody was diluted at 1000. Secondary antibody was diluted at 1:20000